

# RANVIK

EXPORTS PVT. LTD.





# Introduction

Ranvik has established itself as design house for leather home accent furniture and lifestyle accessories. We have more than seventeen years of experience in design & manufacturing of hospitality and desktop accessories, travel luggage and bags as well as furniture. Our designs are governed by style, fitness, ergonomics and durability. Superior export level quality and craftsmanship make our products a valued possession.





# Founder's Note

## VIKASH GUPTA

'My vision is to make Ranvik a unique leather lifestyle brand in the world, where every handcrafted creation combines craftsmanship with modern design to become a conversation piece; and reflects the lifestyle of people who believe in a work-life balance and celebrate the good things in life.'

*Vikash Gupta*



Vikash Gupta  
Founder & CEO

# CONTENTS

01 Our Mission and Achievements

02 Our Clients

03 Product Categories

04 Company Compliance

05 Infrastructure

06 Initial execution - Product Sampling

07 Production and Manufacturing

08 Packaging and Finishing





# OUR VISION

Ranvik's vision is to become a trusted vendor of choice for design ideas and products which epitomize functionality with quality and urban aesthetics. Ranvik's aims at placing absolute importance on understanding the particular needs and wishes of our clients for a personalized service delivered to an uncompromisingly high standard.

Ranvik team believes that luxury is a balance of superior quality, attention to detail and innovative design. Our philosophy drives us toward a cutting-edge result rooted from a meticulously planned and executed conception.





Our leather export division was recently awarded for **Excellence in Export Performance** in the **Handicrafts** sector for the year **2011-12** by **Hon. Delhi CM Sheila Dixit**.

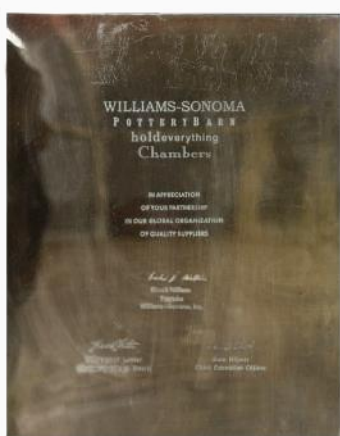


Ranvik Exports was awarded for Excellence Exports Performance in the Handicrafts sector for the year 2011-12 by **Hon. Delhi CM Sheila Dixit**.

# Award & Achievements

Ranvik has won the much coveted “Outstanding Export Performance Award” for the year 1997 – 1998. We have also been awarded the “Quality Supplier Appreciation Award” from the William Sonoma Group (Pottery Barn) in the year 2001.

- Born in 1993 and has expanded ten fold over the last 10 years.
- Last years turnover was over 100%.
- Design - driven team.







INFRA STRUCTURE

# CORE VALUES

The core business model is built on fundamentals of :

1. High quality craftsmanship
2. Time management
3. Room for innovation
4. Strong value proposition



# OUR CLIENTS

The sole reason behind our prolonged existence and success is a satisfied client base spread over the globe. We value every order of our clients whether small or big.

- Restoration Hardware
- Ballard Design
- Anthropologie
- Marks & Spencer
- TJX Inc.
- TJ Maxx
- Country Road
- Zara Home
- Madeleine Home goods
- Crate & Barrel
- Boot Bar
- Wellington Estate
- Condominium Association





# PRODUCT CATEGORY

Our design driven team, constantly churns out fresh ideas and brings them to life with varied materials and techniques, all in sync with the current fashion trends and forecasts.

- Bar and Accessories
  - Accent Furniture
  - Desk Accessories
    - Home Décor
  - Home Furnishing
- Travel Bags and Accessories





# BAR & ACCESSORIES





# BAR & ACCESSORIES



## Mandalay Top Open Leather Bar

This classic design fits beautifully into any home. Compact yet spacious, the top can be lifted when serving drinks.



## Artemis Tall Leather Bar

This eye-catching handcrafted cabinet will hold all that your bar needs and is ideal for entertaining at home.



## Panama Medium Bar

Panama is a medium-sized bar cabinet that expands into a spacious flat top to provide extra space when mixing drinks.



## Belize Bar Trolley

Take the party outside in style with this classically designed, mobile trolley as a perfect accompaniment to your social evenings.



## Miami Small Bar

Miami small bar is the perfect accompaniment to balmy evenings and delicious cocktails.



## Cocktail Set Black & Gold

Our bar accessories set of 7 is equipped with all the necessities to make elevate your experience to the next level.



# ACCENT FURNITURE





# ACCENT FURNITURE



## Genuine Leather Chesterfield Wing Chair

Primary material: Genuine top grain leather in Brown waxy finish  
Secondary material: MDF body frame, Foam



## Hair-on Bench

A genuine hair on leather bench with antique metal finish legs to give your room a contemporary look.



## Genuine Leather Chest Of Drawers

Primary material: Genuine embossed leather in Tan Croco finish.  
Secondary material: Branded MDF body frame



## Nested set of 2 Trunks

A set of 2 trunks with weaved technique on sides in monochrome.



## Hair-on Console

A set of 2 weaved hair-on curved edge consoles in monochrome.



## Set of 3 Nested Tables

A set of 3 nested tables in gorgeous Grey with a contemporary weave design that promises high functionality with beautiful wooden legs.



# DESK ACCESSORIES





# DESK ACCESSORIES



## Rectangular Desk Caddy

A range of desktop accessories and home décor products, thoughtfully designed to offer maximum functionality with design.



## Remote Caddy

Handmade in water-resistant vegan leather in a classic weave pattern, the collection comes in a range of colours to elevate your spaces at home or work.



## Entwine Collection

## A4 Paper Tray

A range of desktop accessories and home décor products, thoughtfully designed to offer maximum functionality with design.



## Desk Caddy

The Modella collection is a modern, minimally styled set of desktop and home décor products offered in material alternatives, which are kinder to the planet.



## Desktop Bin

We have introduced bonded leather as a recycled alternative to tanned leather.



## Modella Collection

## A4 Paper Tray

Bonded leather is a versatile material, made from recycled waste leather using minimal resources to produce high quality leather products.



# HOME DECOR





# HOME DECOR



## Storage Boxes

A range of storage boxes for keeping books, electronics, and other accessories.



## Woven Baskets

Bonded leather weaved baskets in three sizes (Large, Medium and Small).



## Embossed Trays

Set of two trays with embossed panel in front in full grain waxy leather.



## Door Stopper

A beautiful door stopper in suede used to hold a door open or close.



## Vases

A set of beautiful weaved vases, come in different sizes to support whatever flower it is holding or keeping in place.



## Mirrors

A round large mirror in genuine crunch leather for providing more elegance to your home.



# HOME FURNISHING





# HOME FURNISHING



## Genuine Leather Pouf

A range of poufs in genuine leather with cross sticth detailed corners in multiple designs, colors and techniques.



## Hair on Carpet

Hand crafted genuine hair-on leather carpet with patchwork technique.



## Genuine Leather Pouf

A range of poufs in genuine leather with buttons on sides in multiple designs, colors and techniques.



## Hair-on with foil Pouf

Hand crafted genuine hair-on leather poufs with silver foiling and patchwork technique.



## Grey Hair-on Collection

Hand crafted genuine hair-on leather Home furnishing products which includes poufs, cushions, storage boxes and many more products.



## Cushions (Hair-on)

Hand crafted genuine hair-on leather cushions with patchwork technique.



# TRAVEL BAGS AND ACCESSORIES





# TRAVEL BAGS AND ACCESSORIES



## Genuine Leather Duffel Bag

A range of elegant and extremely well-made handcrafted Duffel bags in genuine leather, a leather duffel bag makes a statement for stylish travelers everywhere.



## Laptop bag

A genuine leather laptop bag that protects your device from bumps, scratches, water, and dust while also adding to your personality and making it look more elegant in everyday use.



## Genuine Leather Pouf

A range of genuine leather Sling bag in various designs and color.



## Travel Kit

A collection of leather pouches (Travel Kit) for small accessories which makes a statement for your go to look.



## Travel Shoe Care Kit

A cylindrical-shaped shoe care holder with antique finish hardware to give it an elegant look to carry all your shoe accessories.



## Travel Essential kit

Small travel kit for your travel essentials like card holder, bag tag, passport holder, wallet in genuine leather.



# ALL COLLECTIONS





**RANVIK EXPORTS PVT LTD**  
Living by design

**“ MONOCHROME COLLECTION ”**

Soothing and Relaxing!  
Presenting the collection in Grey, as a  
symbol of stability and peace.

This neutral tone goes well with almost  
every mood and theme and adding on  
to the aesthetics without being too loud.



**Style No. RAN20021**  
Small - 8" x 9" x 2.5"  
Medium - 9" x 10" x 4"



**Style No. RAN20022**  
39" x 26"



**Style No. RAN20022**  
Small - 16" x 4.5" x 3"  
Medium - 18" x 7" x 4"

The collection has been made with  
high quality hair-on leather, that adds  
warmth and a subtle texture to the  
product and enhances the overall  
natural look.

A minimal metallic detailing breaks the  
monotony and symbolizes strength.



**Style No. 2015**  
20" x 20"



**Style No. RAN20026**  
Small- 33" x 19.5"  
Medium - 36" x 23"  
Large - 39" x 26"



**Style No. RAN20030**  
18" x 18" x 18"





## Intertwist Collection

As meant by the word "Intertwist", the collection consists of a lot of weaves and interlacing in its products. Not only the weaves, but we have also twisted together the two design elements in this collection: Weaves & Embossing.

Hence, the name "Intertwist"



Storage Box

Style - RAN-DD-001

23 x 25.5 x 8 cm



Ring Box

Style - RAN-DD-002

9.5 x 7 x 5.5 cm



Accessory Holder

Style - RAN-DD-003

25 Width x 7.5 (Dia) cm

## Thought behind the collection

The leather used in this collection is also unique. This leather has a dual-tone effect and gives a vintage texture and look to the products made with this leather.

Hence, Intertwisting a vintage look with a contemporary collection.



Rectangular Tray

Style - RAN-DD-004

25.5 x 36 cm



Weaved Cushion

Style - RAN-DD-005 - 51 x 51cm

Style - RAN-DD-006 - 30.5 x 46 cm



Set of Trays

Style - RAN-DD-007

L - 48 x 34.5 cm

M - 40 x 30.5 cm

S- 38.5 x 15.5 cm





Style - 7006B

27.94 x 22.86 x 12.7 cm



Style - RAN-RB-005

9.5 x 7 x 5.5 cm



Style - RAN-SB-02

23 x 15cm

### Thought behind the collection

A Black and white patette is timeless and classic,with endless possibilities from subdued to statement-making. Wheather you're color-phobic or color obsessed, you're guaranteed to fall for these products.



Style - 203004

15 x 15 x 15cm



Style - MT-RAN-001

25.4 x 38 x 25.4 cm



Style - RAN-DS-003

51 x 51cm



# Ranvik Exports

Living by design



## Safari Collection

A new collection curated with different shapes, techniques and design elements together in single leopard print hair-on leather.

We have played around multiple symmetric shapes combined with vintage look and antique finish hardware.



Nested Basket

Style: RAN-SB-002

Large - 17.5" x 14" x 8"



Nested Vintage Tray

Style: RAN-BOX-02

Lagre - 18" ( Dia ) x 2" height



Dome Top Boxes

Style - RAN-DD-003

11" x 8" x 4.5"

## Thought behind the collection

Leopard print is a beautiful print in terms of color combination and it's nature.

This collection is having luxurious and premium look. Hence in this we thought to develop a vintage look with a contemporary collection.



Vintage Trunk

Style - RAN-CT-002

Large - 38" x 17" x 24"



Hair-on Mirror

Style - RAN-MRT-022

30" x 40"



Hair-on Desk with Drawers

Style - RAN-DS-001

48" x 22" x 32"





## Tan Collection

A new collection curated with different shapes, techniques and design elements together.

We have played around geometric shapes combined with carving patterns; grooving; weaving and ribbed edging.



Storage Box with Zipper  
Style: RAN-BOX-01  
8" x 12" x 4"



Luxurious Storage Box  
Style: RAN-BOX-02  
12" x 9" x 6.25"



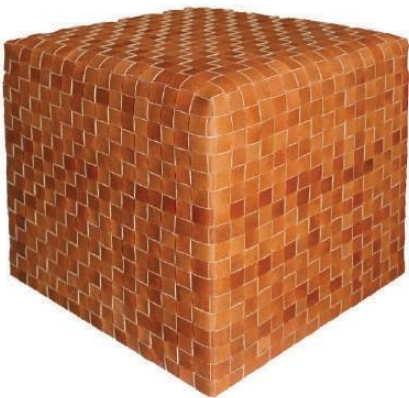
Hexagon Box  
Style - RAN-DD-003  
8" x 8" x 3.5"

## Thought behind the collection

Tan is the most common color one can imagine when we speak of leather.

This collection is an overall dedication to the perception of leather we all have.

The common can also be unique in its own ways.



Weaved Pouf  
Style - RAN-DD-004  
20" x 20" x 20"



Storage Box  
Style - RAN1602005 - 12" x 8" x 4"  
Style - RAN1602015 10" x 6" x 3.25"



Tray  
Style - RAN-1303005  
18" x 12" x 0.8"





## Decor Collection

A new range of home decor accessories, designed using combining different leathers and curated with various shapes, colors, techniques and design elements together.

We have incorporated multiple forms combined with patchwork patterns, weaving techniques and riveting in our product line.



Leather Small Sculpture  
Style: RAN-8002  
7" x 1" x 3.5"



Leather Wall Decor  
Style: RAN-WD-005  
24" x 30"



Rectangular Wall Decor  
Style: RAN-WD-006  
24" x 60"

## Thought behind the collection

This collection is an overall dedication to the perception of leather we all have with earthy tones in terms of color palettes.

We have seen these techniques in various mediums and materials, so we decided to develop a whole new collection around these handcrafted techniques using leather as a primary material for your homes.



Genuine Leather Vases  
Style: RAN-LV-01  
Large – 13" x 4.5" Small - 10" x 4.5"



Leather Vase  
Style: RAN-LV-004  
13" x 4.5"

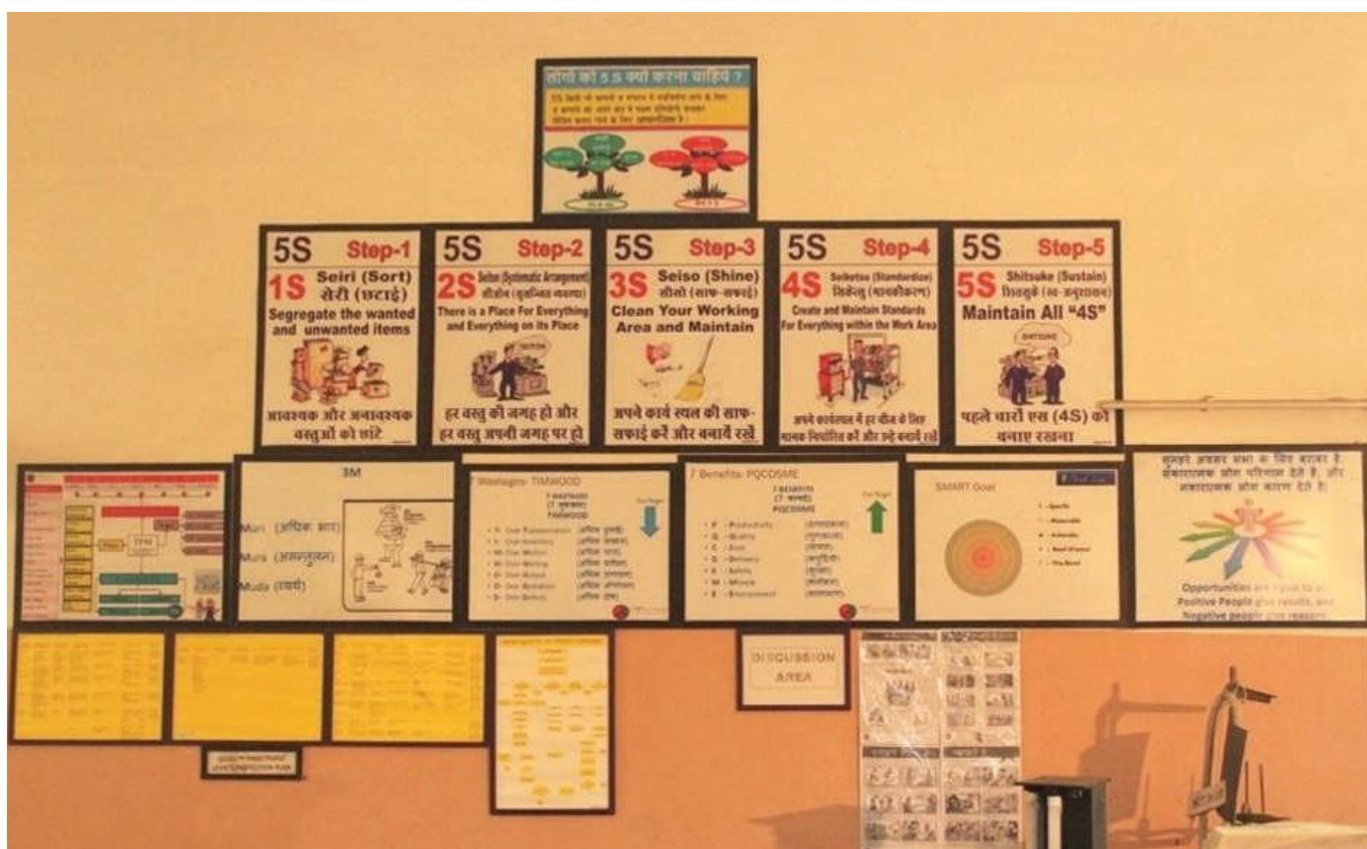


Round Leather Vase  
Style: RAN-LV-002  
5" x 5"



# IMPORTANT NOTICE

All the information contained in this important notice is based on a good faith compilation of information obtained and received from multiple sources. The important notice highlights the importance of safety precautions and the steps, protocols that must be followed during working hours.





# Sampling Area



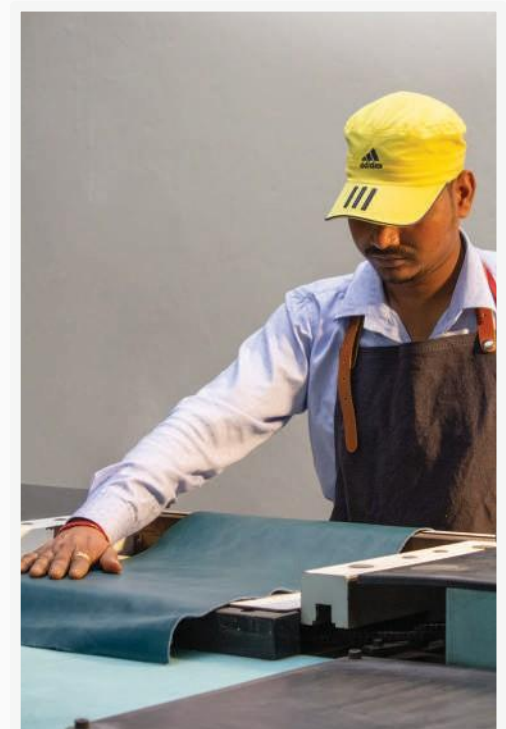
Embossing  
Machine



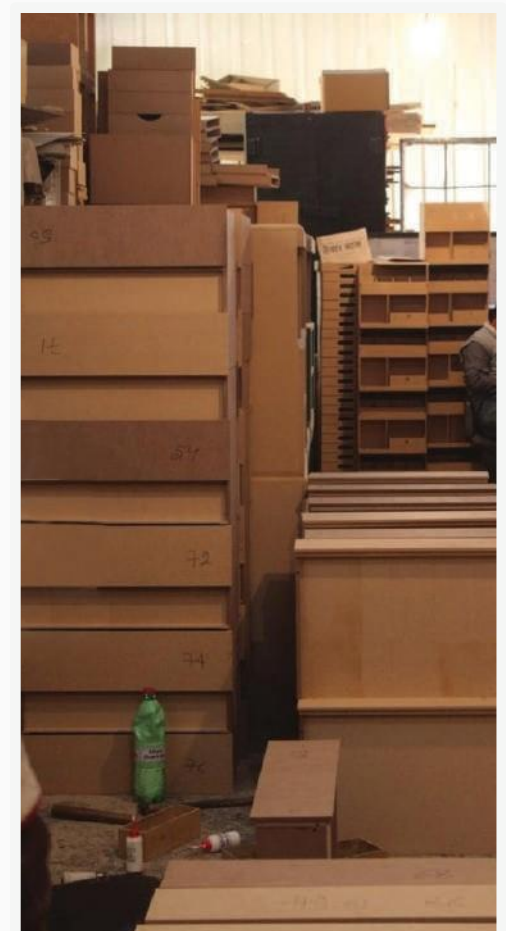
Leather  
Cutting Area



Material  
Storage Area



Sampling  
Tables

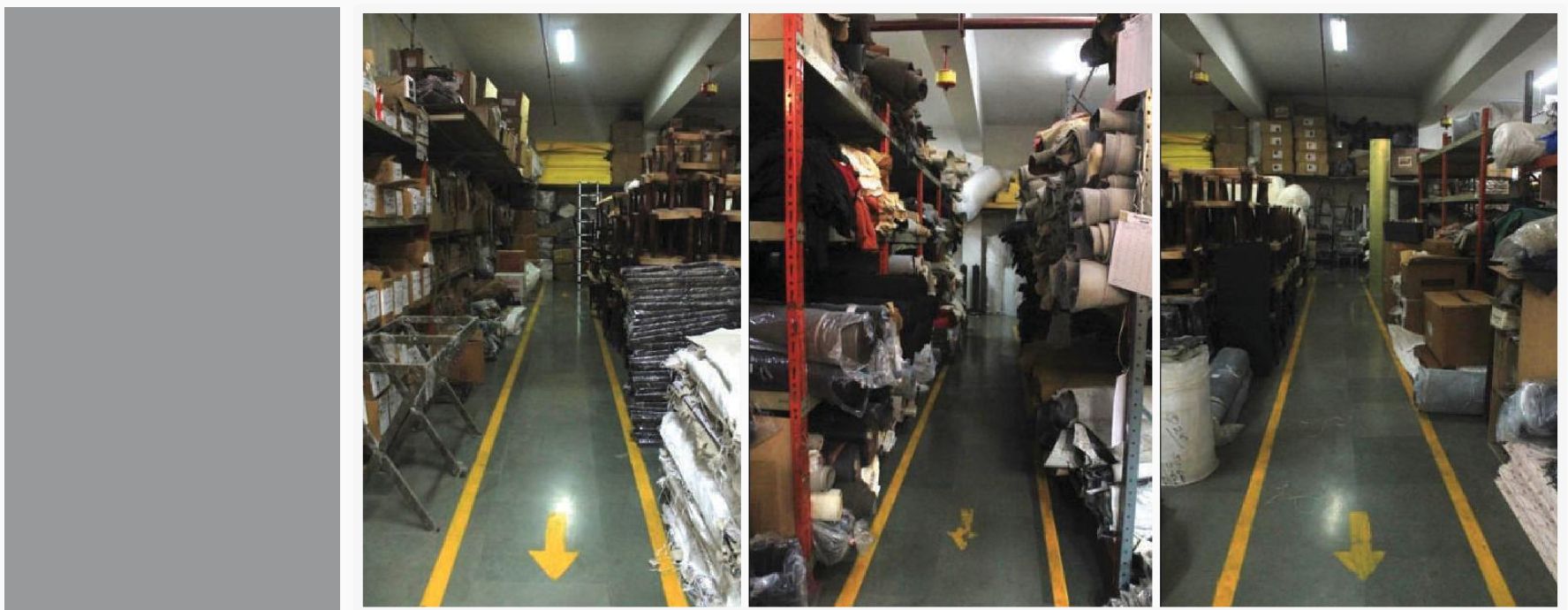


Wood Working  
Area



# Store & Inventory

Our store and inventory contains all types of hardware, leather & leather goods and other essentials.



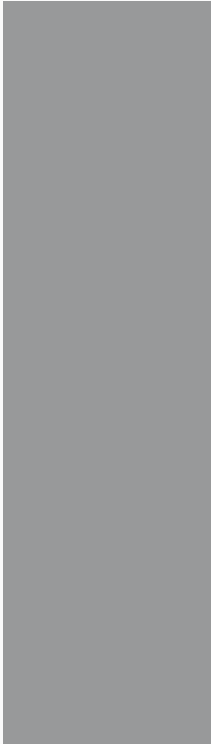
## Types of leathers like:

1. Croco Leather
2. Waxy Leather
3. Crunch Leather
4. Faux Leather
5. Split Leather
6. Lining like Suede fabric and other fabrics etc.



# Production Area

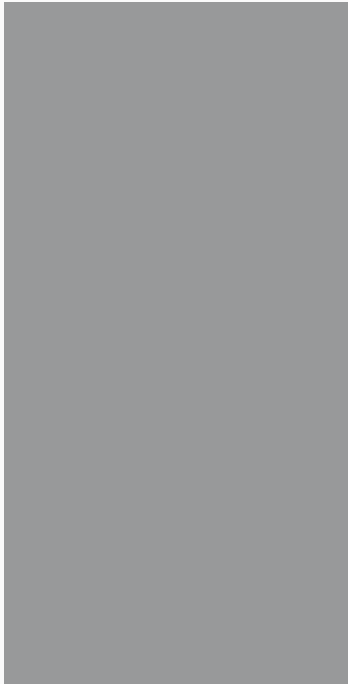
Production Floor-1



Production Floor-2



Finishing & Packaging Area





**RANVIK**  
EXPORTS PVT. LTD.