

**simple**

**is** 

**beautiful.**



# WE ARE NUDE

We live in a confusing world; too many choices, too many products, too much 'noise'.

NUDE believes things can be different; the remedy is simple.

Simple is beautiful.

Simple is pure, clear, transparent.

Simple is useable, clean, uncluttered.

Simple is convenient, reliable, timeless.

Simple is all of these things, and also the reason things are so rarely simple.

Because designing and making something simple is not as simple as it seems.

Simplicity means caring enough to consider actual needs before refining them to their essence—nothing more, nothing less, the final object easy to understand, use and live with.

This means getting closer to the user in order to determine where less equals more, and form most perfectly meets function; where everything is always in the right place at the right time.

This idea of simplicity is the guiding principle behind NUDE.

It is reflected in our design aesthetic, our mindset and culture.

The result is our promise reflected in glass.

NUDE... Simple is beautiful.



# CONTENTS

<b>6</b>	<b>LIFESTYLE</b>
6	ICONS
18	VASES & BOWLS
64	ACCESSORIES
84	LIGHTING
<b>94</b>	<b>DRINKWARE &amp; SERVEWARE</b>
94	ZERO
106	WINE
138	WHISKY & SPIRITS
182	BEVERAGES
206	SERVING
<b>226</b>	<b>DESIGNERS</b>
<b>236</b>	<b>INDEX</b>

All of our catalogues are available in digital formats. Digital catalogues have less impact on environment with zero waste and low carbon footprint.



\*NUDE Lead-Free Crystal Glass falls in the category 3 according to the European Directive 69/493/EEC (Crystal Directive) with no intentionally added lead.

S I M P L E I S F L A W L E S S

S I M P L E I S T I M E L E S S





L I F E S T Y L E

I C O N S





A L I B A K O V A



by  
*Ali  
Bakova*

M E M E N T O M O R I







FACETED SKULL L  
CLEAR  
28460 • 1075628  
198 \* 260 mm / 210 mm  
7 3/4 \* 10 1/4" / 8 1/4"



FACETED SKULL L  
BLACK  
28460 • 1075631  
198 \* 260 mm / 210 mm  
7 3/4 \* 10 1/4" / 8 1/4"



FACETED SKULL L  
OPAL WHITE  
28460 • 1076783  
198 \* 260 mm / 210 mm  
7 3/4 \* 10 1/4" / 8 1/4"



FACETED SKULL L  
SANDBLASTED BLACK  
28460 • 1108532  
198 \* 260 mm / 210 mm  
7 3/4 \* 10 1/4" / 8 1/4"



FACETED SKULL L  
LUMINOUS GREEN  
28460 • 1086327  
198 \* 260 mm / 210 mm  
7 3/4 \* 10 1/4" / 8 1/4"



LIMITED EDITION

FACETED SKULL L  
SILVER  
28460 • 1076926  
198 \* 260 mm / 210 mm  
7 3/4 \* 10 1/4" / 8 1/4"



LIMITED EDITION

FACETED SKULL L  
COPPER  
28460 • 1076927  
198 \* 260 mm / 210 mm  
7 3/4 \* 10 1/4" / 8 1/4"



FACETED SKULL M  
CLEAR  
25640 • 1108534  
117 \* 153 mm / 125 mm  
4 1/2 \* 6" / 5"

MEMENTO MORI

Exquisitely sculptured glass ornament, designed by Istanbul-based Ali Bakova. Shaped as the top half of a human skull, the ornaments rest on a flat base. The pieces come in two sizes with various colors, offering a bold or subtle addition to any desk or bookshelf. The glass is cut in sharp prismatic strokes, reflecting the light in a powerful way.



MEMENTO MORI

Exquisitely sculptured glass ornament, designed by Istanbul-based Ali Bakova. Shaped as the top half of a human skull, the ornaments rest on a flat base. The pieces come in two sizes with various colors, offering a bold or subtle addition to any desk or bookshelf. The glass is cut in sharp prismatic strokes, reflecting the light in a powerful way.





**FACETED  
SKULL S**  
**LUMINOUS GREEN**  
**25397 • 1086330**  
80 \* 105 mm / 83 mm  
3 1/4 \* 4 1/4" / 3 1/4"



**FACETED  
SKULL S**  
**CLEAR**  
**25397 • 1075634**  
80 \* 105 mm / 83 mm  
3 1/4 \* 4 1/4" / 3 1/4"



**FACETED  
SKULL S**  
**BLACK**  
**25397 • 1075637**  
80 \* 105 mm / 83 mm  
3 1/4 \* 4 1/4" / 3 1/4"



**FACETED  
SKULL S**  
**GOLD BOTTOM**  
**25397 • 1086333**  
80 \* 105 mm / 83 mm  
3 1/4 \* 4 1/4" / 3 1/4"



**FACETED  
SKULL S**  
**COPPER BOTTOM**  
**25397 • 1086336**  
80 \* 105 mm / 83 mm  
3 1/4 \* 4 1/4" / 3 1/4"



**FACETED  
SKULL S**  
**SANDBLASTED BLACK**  
**25397 • 1086350**  
80 \* 105 mm / 83 mm  
3 1/4 \* 4 1/4" / 3 1/4"

## MEMENTO MORI

They are iconic items, and the centrepiece of the NUDE Memento Mori collection. The skulls act as a constant reminder of our mortality, and an inspiration to live life to the full, making the most of every moment we have.







SKULL BOWL S  
SMOKE  
28690 • 1086658  
130 \* 134 mm / 81 mm  
5 \* 5 1/4" / 3 1/4"



SKULL BOWL S  
BLACK  
28690 • 1086660  
130 \* 134 mm / 81 mm  
5 \* 5 1/4" / 3 1/4"



SKULL BOWL S  
OPAL WHITE  
28690 • 1086659  
130 \* 134 mm / 81 mm  
5 \* 5 1/4" / 3 1/4"



SKULL BOWL L  
SMOKE  
28416 • 1076779  
240 \* 249 mm / 150 mm  
9 1/2 \* 9 3/4" / 6"



SKULL BOWL L  
BLACK  
28416 • 1075713  
240 \* 249 mm / 150 mm  
9 1/2 \* 9 3/4" / 6"



SKULL BOWL L  
OPAL WHITE  
28416 • 1076780  
240 \* 249 mm / 150 mm  
9 1/2 \* 9 3/4" / 6"



WHISKY BOTTLE  
92926 • 1107757  
750 cc / 115 \* 155 mm / 183 mm  
25 1/4 oz / 4 1/2 \* 6" / 7 1/4"



SET OF 2 WHISKY GLASSES  
22610 • 1107964  
300 cc / 106 mm  
10 1/4 oz / 4 1/4"



TEALIGHT HOLDER  
CLEAR  
25435 • 1107069  
80 \* 105 mm / 75 mm  
3 1/4 \* 4 1/4" / 3"

MEMENTO MORI

MEMENTO MORI





FACETED SKULL S  
CLEAR  
25397 • 1108931  
80 \* 105 mm / 83 mm  
3 1/4 \* 4 1/4" / 3 1/4"



FACETED SKULL S  
CLEAR  
25397 • 1108934  
80 \* 105 mm / 83 mm  
3 1/4 \* 4 1/4" / 3 1/4"



FACETED SKULL S  
CLEAR  
25397 • 1108936  
80 \* 105 mm / 83 mm  
3 1/4 \* 4 1/4" / 3 1/4"



FACETED SKULL S  
BLACK  
25397 • 1108932  
80 \* 105 mm / 83 mm  
3 1/4 \* 4 1/4" / 3 1/4"



FACETED SKULL S  
BLACK  
25397 • 1108933  
80 \* 105 mm / 83 mm  
3 1/4 \* 4 1/4" / 3 1/4"



FACETED SKULL S  
BLACK  
25397 • 1108935  
80 \* 105 mm / 83 mm  
3 1/4 \* 4 1/4" / 3 1/4"



FACETED SKULL S  
BLACK  
25397 • 1108937  
80 \* 105 mm / 83 mm  
3 1/4 \* 4 1/4" / 3 1/4"





L I F E S T Y L E

V A S E S & B O W L S







NEW



VASE L

**CLEAR**  
**38678 • 1207072**  
 210 mm / 600 mm  
 23 1/2"

NEW



VASE L

**CARAMEL**  
**38678 • 1207072**  
 210 mm / 600 mm  
 23 1/2"

**MOLTEN**

Molten crystalline collection of vases stands as a testament to interdisciplinary innovation, combining traditional craftsmanship with 3D scanning technology. Originating from a handcrafted ceramic model, Molten transcends ordinary design boundaries. This mouth-blown vase collection is available in two distinct sizes; a bouquet vase and a floor vase. The smaller vase elegantly adorns tabletops with its refined presence, while the larger variant commands attention, becoming a centerpiece in any living space. Both sizes harmoniously blend to create a cohesive collection that speaks of both delicacy and strength. The design of Molten is intentionally shaped to be in harmony with the plants it holds. Its form, inspired by natural elements, aims to envelop the plants like a root, creating an organic and symbiotic visual. The molten-like texture of the vases captures the fluid dynamism of nature, paying tribute to the intricate patterns found in our natural environment. The production process of Molten acquires a deeper conceptual significance, as it unites glass and ceramics, materials that are both derived from the earth's primordial elements.



NEW



VASE

**CLEAR**  
**38677 • 1206869**  
 127 mm / 270 mm  
 10 3/4"

NEW



VASE

**ORANGE**  
**38677 • 1206926**  
 127 mm / 270 mm  
 10 3/4"



**MOLTEN**

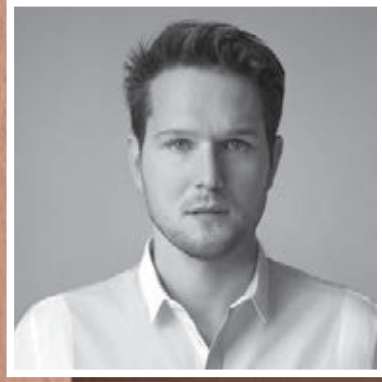


MOLTEN

MOLTEN



SEBASTIAN HERKNER



by

Sebastian  
Herkner

B E R E T







designed by SEBASTIAN HERKNER



LIDDED VESSEL  
COBALT BLUE  
28936 • 1101357  
130 mm / 107 mm  
5" / 4 1/4"



LIDDED VESSEL  
CARAMEL  
28936 • 1101359  
130 mm / 107 mm  
5" / 4 1/4"



LIDDED VESSEL  
PETROLEUM GREEN  
28938 • 1101365  
160 mm / 154 mm  
6 1/4" / 6"



LIDDED VESSEL  
CARAMEL  
28938 • 1101367  
160 mm / 154 mm  
6 1/4" / 6"



LIDDED VESSEL  
AMBER  
28937 • 1101361  
214 mm / 65 mm  
8 1/4" / 2 1/2"



LIDDED VESSEL  
CARAMEL  
28937 • 1101363  
214 mm / 65 mm  
8 1/4" / 2 1/2"

BERET

## BERET

Like the inimitable French headgear, these lidded vessels are remarkable for their elegant, effortless simplicity. Lids crafted from silky-looking brass close over softly tinted glass containers—in three sizes—like the tasteful toppers of the Basque people, who originated the beret.







designed by PENTAGON DESIGN



VASE  
CLEAR  
38004 • 1101941  
315 mm / 300 mm  
12 1/2" / 11 3/4"



VASE  
PETROLEUM GREEN  
38004 • 1101943  
315 mm / 300 mm  
12 1/2" / 11 3/4"



VASE  
CARAMEL  
38004 • 1101945  
315 mm / 300 mm  
12 1/2" / 11 3/4"

BLADE

## BLADE

Playing on glass' innate material contradictions, the Blade vases juxtapose soft and hard, smooth and sharp, in a single object. Inspired by the art world's explorations into sheer overlain color, Blade gives a nod, in particular, to the work of artists, whose works rely on the overlap of transparent hues.



BLADE



VASE  
CLEAR  
38005 • 1101946  
206 \* 108 mm / 400 mm  
8 \* 4 2/4" / 15 3/4"



VASE  
PETROLEUM GREEN  
38005 • 1101948  
206 \* 108 mm / 400 mm  
8 \* 4 2/4" / 15 3/4"



VASE  
CARAMEL  
38005 • 1101950  
206 \* 108 mm / 400 mm  
8 \* 4 2/4" / 15 3/4"



VASE  
Clear  
28920 • 1098966  
395 \* 130 mm / 200 mm  
15 1/2 \* 5" / 7 3/4"



VASE  
Petroleum Green  
28920 • 1101952  
395 \* 130 mm / 200 mm  
15 1/2 \* 5" / 7 3/4"



VASE  
Caramel  
28920 • 1101954  
395 \* 130 mm / 200 mm  
15 1/2 \* 5" / 7 3/4"

BLADE



BUBBLE



VASE S  
BLUE  
28289 • 1055646  
350 \* 300 mm / 315 mm  
13 3/4 \* 11 3/4" / 12 1/2"



VASE L  
BLUE  
28287 • 1055649  
400 \* 365 mm / 360 mm  
15 3/4 \* 14 1/4" / 14 1/4"

BUBBLE



Playful and modern, Bubble vases in either smoke or blue have a funky and relaxed air to them. Made by a master blower, they are free shapes—not from a mould—so not one of them will ever be the same. Their shape retains a raw and organic feel, and is a vivid representation of the art of glassblowing.





LIMITED EDITION

VASE  
8150 • 1108336  
168 mm / 388 mm  
6 1/2" / 15 1/4"



LIMITED EDITION

VASE  
8151 • 1108338  
258 mm / 342 mm  
10 1/4" / 13 1/2"



LIMITED EDITION

BOWL  
8152 • 1108340  
358 mm / 266 mm  
14" / 10 1/2"



LIMITED EDITION

BOWL  
8153 • 1108342  
462 mm / 175 mm  
18 1/4" / 7"

## CONCENTRICS

"No doubt, the most seductive feature of glass is its transparency," Arad says. But the Concentrics vessels make the most of the malleability of the material as well. His second collaboration with NUDE, this four piece set of nesting bowls and vases were handblown using an artisanal process called *çeşm-i bülbül* that originated in Istanbul, fusing slender strips of colored glass into the clear body of each container.





LIMITED EDITION

VASE  
PURPLE  
28387 • 1091741  
180 mm / 400 mm  
7" / 15 3/4"



LIMITED EDITION

BOWL  
PURPLE  
28435 • 1091756  
240 mm / 135 mm  
9 1/2" / 5 1/4"



BOWL  
STEEL BLUE  
28435-1204979  
240 mm / 135 mm  
9 1/2" / 5 1/4"



VASE  
STEEL BLUE  
28390 • 1204975  
200 mm / 250 mm  
7 3/4 oz / 9 3/4"



VASE  
STEEL BLUE  
28453 • 1204978  
90 mm / 200 mm  
7" / 15 3/4"

CONTOUR

An innovative range comprising of an elegant crystal vases, bowls, candle holder, carafe and wine glasses. At once solid yet ethereal, the glassware seem to disappear as they reach their apex, allowing the contents to take over the drama



DEMIJOHN XL  
SMOKE  
17756 • 1050840  
325 mm / 485 mm  
12 3/4" / 19"



DEMIJOHN L  
SMOKE  
17754 • 1050838  
260 mm / 340 mm  
10 1/4" / 13 1/2"

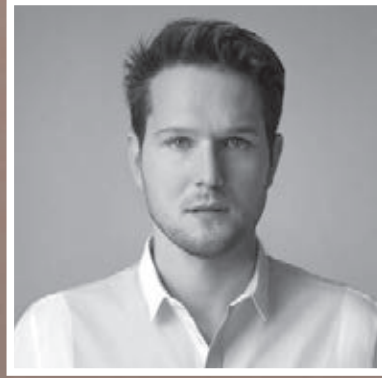
DAME JEANNE

A play on the term Demijohn—the traditional French jug used to ferment wine—these two brushed-grey vases can be used as ornaments, or to hold a single flower. The XL version is a floor standing item, the smaller sized is for a windowsill or bookshelf. Using them to refract light adds a startling sense of drama to any home.





SEBASTIAN HERKNER



by  
*Sebastian  
Herkner*

E C R I N







LIDDED VESSEL  
PETROLEUM GREEN LID  
92760 • 1105403  
94 mm / 125 mm  
3 3/4" / 5"



LIDDED VESSEL  
PETROLEUM GREEN LID  
92762 • 1105405  
166 mm / 118 mm  
6 1/2" / 4 3/4"



LIDDED VESSEL  
PETROLEUM GREEN LID  
92761 • 1105404  
146 mm / 182 mm  
5 3/4" / 7 1/4"



LIDDED VESSEL  
RED LID  
92760 • 1105400  
94 mm / 125 mm  
3 3/4" / 5"



LIDDED VESSEL  
AMBER LID  
92762 • 1105402  
166 mm / 118 mm  
6 1/2" / 4 3/4"



LIDDED VESSEL  
CARAMEL LID  
92761 • 1105401  
146 mm / 182 mm  
5 3/4" / 7 1/4"

ECRIN

### ECRIN

This collection is inspired by the Earth Pyramids of Ritten, a very unique formation of the local landscape. "The idea of balancing a round stone on the top of another volume was fascinating me to design Ecrin," a collection of containers in three sizes with a stone-like lid on top. These lids are smooth like river stones blown in colored glass. The bases of the containers are handmade in thick glass to contrast the lightness of the lids. It is a composition of volumes, colors and space in glass.





designed by NIGEL COATES



**BOWL**  
CLEAR  
28533 • 1076890  
162 mm / 75 mm  
6 1/2" / 3"



**BOWL**  
CLEAR  
28541 • 1076886  
220 mm / 74 mm  
8 3/4" / 3"



**BOWL**  
CLEAR  
28535 • 1076882  
269 mm / 125 mm  
10 1/2" / 5"



**BOWL**  
CLEAR  
28536 • 1076884  
300 mm / 100 mm  
11 3/4" / 4"



**BOWL**  
CLEAR  
31983 • 1076888  
322 mm / 230 mm  
12 3/4" / 9"

## HEADS UP

The double curve of the design plays with the light, the thick base of each item creating the sense that each of the pieces are floating in air. Each item incorporates the same element of sensuousness and light; the bowls have a perfect balance of the masculine and feminine.



designed by ALEJANDRO RUIZ



**BOWL**  
OPAL PINK  
28035 • 1050812  
270 mm / 110 mm  
10 3/4" / 4 1/4"



**BOWL**  
SMOKE  
28035 • 1050810  
270 mm / 110 mm  
10 3/4" / 4 1/4"

## KURAGE

Another reversible item, the vase is a large blown-glass bowl in smoked grey or NUDE pink. A dramatic piece that is freely-blown, ensuring that each is completely unique, it can be used for flower arrangement or simply storage. Turned on its head, it also works as a display stand for cakes and desserts. Its soft curves are irresistible, providing a magnificent pedestal for any display.



HEADS UP

KURAGE

designed by ALI BAKOVA



VASE  
SMOKE  
28304 • 1050814  
180 mm / 350 mm  
7" / 13 3/4"



VASE  
SMOKE  
23454 • 1050816  
180 mm / 200 mm  
7" / 7 3/4"

INCA

## INCA

A magical glass vase in smoked grey, its angles are Escher-like in their seeming illogicality. The vase appears to be triangular and circular at the same time, and the way the glass twists around itself creates a fascinating illusion. The edges are soft and slightly elliptic, making the vase beautiful to touch. An object which will highlight any room, the Inca comes in two sizes, both as mesmerising as each other.





D E F N E K O Z



by

Defne  
Koz

L A Y E R S







VASE  
OPAL WHITE  
28810 • 1095745  
138 \* 68 mm / 325.5 mm  
5 1/2 \* 2 3/4" / 12 3/4"



VASE  
AMBER  
28810 • 1095746  
138 \* 68 mm / 325.5 mm  
5 1/2 \* 2 3/4" / 12 3/4"



VASE  
SMOKE  
28810 • 1095747  
138 \* 68 mm / 325.5 mm  
5 1/2 \* 2 3/4" / 12 3/4"



VASE  
OPAL WHITE  
28812 • 1095753  
395 \* 230 mm / 227.5 mm  
15 2/4 \* 9" / 9"



VASE  
AMBER  
28812 • 1095754  
395 \* 230 mm / 227.5 mm  
15 2/4 \* 9" / 9"



VASE  
STEEL BLUE  
28812 • 1095755  
395 \* 230 mm / 227.5 mm  
15 2/4 \* 9" / 9"

LAYERS

LAYERS

LAYERS

This vase consists of three blown-glass vessels in graphical forms that nest together, letting their various translucent hues overlap.



LAYERS





VASE  
OPAL WHITE  
28811 • 1095749  
261 \* 125 mm / 276 mm  
10 1/4 \* 5" / 10 3/4"



VASE  
AMBER  
28811 • 1095750  
261 \* 125 mm / 276 mm  
10 1/4 \* 5" / 10 3/4"



VASE  
STEEL BLUE  
28811 • 1095751  
261 \* 125 mm / 276 mm  
10 1/4 \* 5" / 10 3/4"



VASE  
OPAL WHITE  
28553 • 1076812  
114 mm / 95 mm  
4 1/2" / 3 3/4"



VASE  
OPAL WHITE  
28554 • 1076830  
56 mm / 103 mm  
2 1/4" / 4"



VASE  
OPAL WHITE  
28552 • 1076803  
80 mm / 150 mm  
3 1/4" / 6"



VASE  
OPAL WHITE  
28551 • 1076791  
112.5 mm / 200 mm  
4 1/2" / 7 3/4"



VASE  
STEEL BLUE  
28553 • 1076814  
114 mm / 95 mm  
4 1/2" / 3 3/4"



VASE  
STEEL BLUE  
28554 • 1076832  
56 mm / 103 mm  
2 1/4" / 4"



VASE  
STEEL BLUE  
28552 • 1076807  
80 mm / 150 mm  
3 1/4" / 6"



VASE  
STEEL BLUE  
28551 • 1076795  
112.5 mm / 200 mm  
4 1/2" / 7 3/4"





designed by INGRID BERGÉR



designed by INGRID BERGÉR



VASE  
STEEL BLUE  
20787 • 1116378  
180 mm / 320 mm  
7" / 12 1/2"



VASE  
OPAL WHITE  
20787 • 1116374  
180 mm / 320 mm  
7" / 12 1/2"



VASE  
OPAL PINK  
20787 • 1116375  
180 mm / 320 mm  
7" / 12 1/2"



VASE  
STEEL BLUE  
20791 • 1116373  
240 mm / 200 mm  
9 1/2" / 7 3/4"



VASE  
OPAL WHITE  
20791 • 1116376  
240 mm / 200 mm  
9 1/2" / 7 3/4"



VASE  
OPAL PINK  
20791 • 1116377  
240 mm / 200 mm  
9 1/2" / 7 3/4"



VASE  
STEEL BLUE  
28298 • 1116381  
88 mm / 280 mm  
3 1/2" / 11"



VASE  
OPAL WHITE  
28298 • 1116379  
88 mm / 280 mm  
3 1/2" / 11"



VASE  
OPAL PINK  
28298 • 1116380  
88 mm / 280 mm  
3 1/2" / 11"

MAGNOLIA

MAGNOLIA

## MAGNOLIA

Because of the method by which these vases are made, not one of them is exactly the same. Handblown, half of the glass is coloured in either pink, white or blue. The bottom half of the vase remains clear in order to reveal its contents. Delightful for use all around the home.



## MAGNOLIA

Like a Zen master, the Magnolia range instills a sense of the moment, and can be mixed and matched in a multitude of ways. Perfect for all around the home.





ROCK & POP ARTIST COLLECTION



VASE  
OPAL WHITE  
28552 • 1112687  
80 mm / 150 mm  
3 1/4" / 6"



VASE  
OPAL WHITE  
28552 • 1112688  
80 mm / 150 mm  
3 1/4" / 6"



VASE  
OPAL WHITE  
28552 • 1112686  
80 mm / 150 mm  
3 1/4" / 6"

MINI MAGNOLIA



designed by ALEV EBÜZZIYA



BOWL  
OPAL GREY  
28392 • 1055575  
218.5 mm / 80 mm  
8 1/2" / 3 1/4"



BOWL  
BLACK  
28394 • 1055534  
310 mm / 74 mm  
12 1/4" / 3"



BOWL  
OPAL GREY  
28394 • 1055535  
310 mm / 74 mm  
12 1/4" / 3"

MIDNIGHT

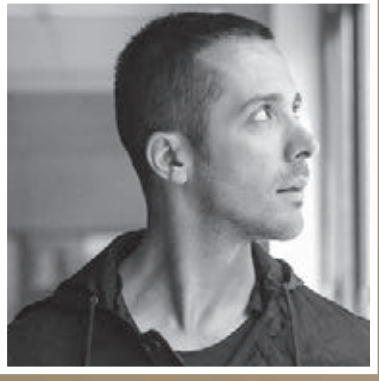


The bowl perfectly marries the masculine and feminine with their crisp rim and velvety curves. The bottom of each bowl slopes to a soft base, insinuating a lightness to the item, as if floating on air.





T A M E R N A K I Ş Ç I



by  
*Tamer  
Nakışçı*

M I S T



GLASS IS  
TOMORROW



VASE  
DUSTY ROSE  
15556 • 1116250  
205 \* 110 mm / 290 mm  
8 \* 4 1/4" / 11 1/2"



VASE  
DUSTY ROSE  
15557 • 1116252  
280 \* 140 mm / 380 mm  
11 \* 5 1/2" / 15"



VASE  
DUSTY ROSE  
15558 • 1116254  
270 \* 100 mm / 210 mm  
10 3/4 \* 4" / 8 1/4"

DESIGN PLUS  
Winner 2016



VASE  
CLEAR  
15556 • 1075319  
205 \* 110 mm / 290 mm  
8 \* 4 1/4" / 11 1/2"



VASE  
CLEAR  
15557 • 1075320  
280 \* 140 mm / 380 mm  
11 \* 5 1/2" / 15"



VASE  
CLEAR  
15558 • 1075321  
270 \* 100 mm / 210 mm  
10 3/4 \* 4" / 8 1/4"



VASE  
CAMEL  
15556 • 1101315  
205 \* 110 mm / 290 mm  
8 \* 4 1/4" / 11 1/2"



VASE  
CAMEL  
15557 • 1101322  
280 \* 140 mm / 380 mm  
11 \* 5 1/2" / 15"



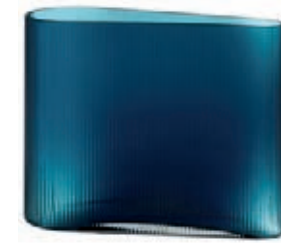
VASE  
CAMEL  
15558 • 1101326  
270 \* 100 mm / 210 mm  
10 3/4 \* 4" / 8 1/4"



VASE  
PETROLEUM GREEN  
15556 • 1101313  
205 \* 110 mm / 290 mm  
8 \* 4 1/4" / 11 1/2"



VASE  
PETROLEUM GREEN  
15557 • 1101317  
280 \* 140 mm / 380 mm  
11 \* 5 1/2" / 15"



VASE  
PETROLEUM GREEN  
15558 • 1101324  
270 \* 100 mm / 210 mm  
10 3/4 \* 4" / 8 1/4"

MIST

From the designer Tamer Nakişçi, this trio of vases are made in an extraordinary clear yet corrugated glass. The rippled effect creates an optical illusion, reflecting the different colours of the contents in an almost magical way. Flowers particularly are beautifully presented in these vases, the undulation blurring the stems, bringing into focus the colour of the petals.



MIST

The wider versions are also suited to storing newspapers, books or magazines. Simple but unique, these items work perfectly both in a domestic and professional environment.



MIST





TEALIGHT HOLDER  
DUSTY ROSE  
38591 • 1116576  
70 \* 75 mm / 107 mm  
2 3/4 \* 3" / 4 1/4"



TEALIGHT HOLDER  
DUSTY ROSE  
38441 • 1116577  
93 \* 100 mm / 141 mm  
3 3/4 \* 4" / 5 1/2"



TEALIGHT HOLDER  
CLEAR  
38591 • 1116575  
70 \* 75 mm / 107 mm  
2 3/4 \* 3" / 4 1/4"



TEALIGHT HOLDER  
CLEAR  
38441 • 1107884  
93 \* 100 mm / 141 mm  
3 3/4 \* 4" / 5 1/2"

## MIST LIGHTS

A new addition to the Mist universe. Because light comes in waves. Inspired by the beauty of the light. Night & Day. The name 'Lights' primarily stands for the light & fire, but also for all the little things that you can do with your new glass pieces. Like serving grapes in them, or making a special place for your jewelry. Bringing the Mist experience into a new scale, inviting people to take a closer look and discover new innovative uses. Pushing the glass material into daily use through new scenarios. Mist Lights collection is offering a new perspective on how magical a candle holder can be by focusing on the optical illusions of the piece and creating dreamy worlds with it.



VASE  
OPAL GREY  
28350 • 1055588  
250 \* 250 mm / 228 mm  
9 3/4 \* 9 3/4" / 9"



VASE  
BLUE  
28350 • 1055595  
250 \* 250 mm / 228 mm  
9 3/4 \* 9 3/4" / 9"



VASE  
OPAL GREY  
28351 • 1055590  
215 \* 215 mm / 197 mm  
8 1/2 \* 8 1/2" / 7 3/4"



VASE  
BLUE  
28351 • 1055598  
215 \* 215 mm / 197 mm  
8 1/2 \* 8 1/2" / 7 3/4"



VASE  
CLEAR  
28352 • 1055591  
185 \* 185 mm / 163 mm  
7 1/4 \* 7 1/4" / 6 1/2"



VASE  
CLEAR  
28353 • 1055593  
155 \* 155 mm / 133 mm  
6 \* 6" / 5 1/4"



VASE  
OPAL GREY  
28353 • 1055594  
155 \* 155 mm / 133 mm  
6 \* 6" / 5 1/4"



VASE  
BLUE  
28353 • 1055604  
155 \* 155 mm / 133 mm  
6 \* 6" / 5 1/4"

## MONO BOX

A large family of vases, the simplicity of Glass mono Boxes allows maximum enjoyment of whatever you choose to put in them. Whether an aquarium, an array of stones, or desert plants, the clarity of the surface brilliantly enhances the contents. The larger vases in blue feel almost liquid. An art piece in themselves, they can also be employed for multiple uses, such as a punch bowl or an ice bucket. The more modest sized vases are perfect for fruit or candies. The smallest in the range is wonderful for all manner of items: jewellery, makeup, tissues, cotton wool. They make a perfect gift, not only for others but yourself. The ones in opal grey work brilliantly on an office desk. As a receptacle for business cards, USB sticks, paper clips, rubber bands, they are a simple way of clearing clutter, while at the same time, making a stylish statement.





VASE  
STEEL BLUE  
38342 • 1204433  
85 mm / 77 mm  
3 1/3" / 3"



VASE  
STEEL BLUE  
38340 • 1204432  
140 mm / 134 mm  
11 3/4" / 11 3/4"



VASE  
STEEL BLUE  
38341 • 1204430  
200 mm / 190 mm  
7 7/8" / 7 2/4"



VASE  
ORANGE  
38342 • 1204434  
85 mm / 77 mm  
3 1/3" / 3"



VASE  
ORANGE  
38340 • 1204431  
140 mm / 134 mm  
11 3/4" / 11 3/4"



VASE  
ORANGE  
38341 • 1204429  
200 mm / 190 mm  
7 7/8" / 7 2/4"

MARS

MARS



These three spherical-shaped vases are an homage to the planet Mars and its two moons. Mars, the fourth planet from the sun, has long captivated human imagination with its shades of steel blue dominating its landscape. These unique vases contribute to the planet's otherworldly beauty, reminding us of the wide diversity of colors and landscapes that exist beyond our own planet.







VASE  
CLEAR  
38230 • 1107351  
197 \* 182 mm / 138 mm  
7 3/4 \* 7 1/4 \* 5 1/2"



VASE  
CLEAR  
38231 • 1107353  
200 \* 178 mm / 242.5 mm  
7 3/4 \* 7" / 9 1/2"



BOWL  
CLEAR  
38232 • 1107355  
305 mm / 98 mm  
12" / 3 3/4"



VASE  
SMOKED GREEN  
38230 • 1107352  
197 \* 182 mm / 138 mm  
7 3/4 \* 7 1/4 \* 5 1/2"



VASE  
SMOKED GREEN  
38231 • 1107354  
200 \* 178 mm / 242.5 mm  
7 3/4 \* 7" / 9 1/2"



BOWL  
SMOKED GREEN  
38232 • 1107356  
305 mm / 98 mm  
12" / 3 3/4"



OPTI

OPTI

The Opti vases and centerpiece offer a hypnotic contrast of soft curves and subtle fluting, wearing only the gentlest of vertical ripples around the body of each piece. This implied plasticity stands in contrast to the rims, which are cut flat and not tapered. The collection will be available in clear and green.





LIDDED VESSEL  
SMOKE  
92426 • 1050696  
90 mm / 90 mm  
3 1/2" / 3 1/2"



LIDDED VESSEL  
OPAL WHITE  
92426 • 1050695  
90 mm / 90 mm  
3 1/2" / 3 1/2"



LIDDED VESSEL  
CARAMEL  
92426 • 1101353  
90 mm / 90 mm  
3 1/2" / 3 1/2"



LIDDED VESSEL  
CARAMEL  
92356 • 1101347  
150 mm / 150 mm  
6" / 6"



LIDDED VESSEL  
OPAL PINK  
92356 • 1050703  
150 mm / 150 mm  
6" / 6"



LIDDED VESSEL  
CLEAR  
92356 • 1027133  
150 mm / 150 mm  
6" / 6"



VASE  
OPAL PINK  
28367 • 1076992  
125 \* 125 mm / 200 mm  
5 \* 5" / 7 3/4"



VASE  
OPAL PINK  
28369 • 1076989  
320 \* 170 mm / 270 mm  
12 1/2 \* 6 3/4" / 10 3/4"

NEST

SWEETS

NEST

A candy box to store anything or nothing at all, such is its beauty. It comes in two sizes, allowing it to be used both as a decorative and utility item. The lid is perfectly formed and drops neatly into place, protecting the contents from prying hands but enabling easy removal when the urge for a treat becomes overwhelming. The Nest is available in five soft yet distinct colours: smoke, opal white, caramel, opal pink and clear.



SWEETS

Exquisite, minimal, feminine, and sensual. Sweets is a set of three vases quintessentially NUDE. In a delicate brushed pink and resting on a gloss white base (which also acts as a tray), these vases are both striking and blissful. Perfect for bathrooms and bedrooms, their luxurious surface invites you to touch, so softly curved is the sandblasted texture. The colour is iridescent, at once soothing yet simple. Cleverly designed for a single-stemmed flower, the Sweet vase brilliantly lives up to its name.





L I F E S T Y L E

A C C E S S O R I E S







FISH MEMORY  
CLEAR + BLACK  
92983 • 1203922  
138 mm  
5 1/2"

### FISH MEMORY

Fish Memory Ashtray designed by Ahmet Güneştekin, features colorful patterns and metamorphosed animal motifs which are recurring elements in the artist's paintings. By using the fish imagery, the artist metaphorically establishes a connection with memory. In this piece, the skull motif symbolizes immortality. The NUDE Fish Memory cigar ashtray is a unique design that combines symbolic elements with



TROYA  
CLEAR  
32358 • 1205739  
750 cc 225 mm  
26 1/2 oz / 8 1/3"

### TROYA

Troya Wine Glass, signed by Ahmet Güneştekin, focuses on the complexity of human nature through the storytelling we often encounter in the artist's works. This special work represents the destruction of Troy and its wide ranging impact, from ancient times to the present day. NUDE Troya Stem Zero wine glass features a unique design combined with symbolic elements in crystalline glass, highlighting the mastery of hand craftsmanship.







**TERRARIUM**  
CLEAR  
15479 • 1050536  
226 mm / 340 mm  
9" / 13 1/2"



**MINI TERRARIUM**  
CLEAR  
15531 • 1055234  
128.5 mm / 200 mm  
5" / 7 3/4"



**CANDLE HOLDER**  
CLEAR  
92606 • 1075367  
93 mm / 135 mm  
3 3/4" / 5 1/4"



**CANDLE HOLDER**  
SMOKE  
92606 • 1075368  
93 mm / 135 mm  
3 3/4" / 5 1/4"



**CANDLE HOLDER**  
GREY  
92606 • 1075369  
93 mm / 135 mm  
3 3/4" / 5 1/4"

## EDEN

The Eden that comes in two sizes is an exquisitely manufactured glass terrarium—a miniature garden. Lying atop a bowl of moulded concrete (is a substance that lies at the heart of the NUDE ethos, being that it is simple yet graphically strong), the Eden can be used for planting all year round. For those less green-fingered, it also makes a beautiful candle feature for both indoors and out. A solid yet dynamic candle holder, its base is weighted for stability, making a perfect container for a candle or potted plant. The top half of the candle holder lifts off for ease of access, resting elegantly on a subtly grooved rim. Curved towards its opening, the glass is transparent, allowing for both air and light while protecting the contents from external elements.



**MIRROR**  
SMOKED GREEN  
28225 • 1050509  
200 mm / 295.5 mm  
7 3/4" / 11 3/4"

## MOON

An immaculately created blown-glass hand mirror eloquently resting on a circular oak stand. The glass comes in green, its surface softly brushed, its weight carefully calibrated. The simplicity of the design ensures focus and remains purely on the mirror's reflection.



**JEWELLERY BOX**  
SMOKED GREEN  
28223 • 1050507  
130 mm / 210 mm  
5" / 8 1/4"



**JEWELLERY BOX**  
CLEAR  
28223 • 1050426  
130 mm / 210 mm  
5" / 8 1/4"

## BLOSSOM

A simple jewellery tree made from oak, set within a pure glass surround in either clear or green. The design cleverly enhances the jewellery, the contrast between the organic and the hand-crafted, both charming and practical. Reminiscent of a birdcage, the soft curve of the dome beautifully sets off the sparkle of necklaces, bracelets and rings.



designed by NUDE DESIGN TEAM



**CIGAR ASHTRAY**  
**CLEAR**  
**24356 • 1049318**  
150 mm / 35 mm  
6" / 1 1/2"



**CIGAR ASHTRAY**  
**BLACK**  
**24356 • 1050746**  
150 mm / 35 mm  
6" / 1 1/2"



### ALTRUIST

Built of solid glass and with the placement grooves facing each other, this is an ashtray to be shared, an ashtray that engenders discussion, a sharing of ideas, or late night attempts at putting the world to right. It comes in clear glass or black, reflecting the smoker's personality.

designed by NUDE DESIGN TEAM



**CIGAR ASHTRAY**  
**CLEAR**  
**24357 • 1049316**  
130 \* 180 mm / 40 mm  
5 \* 7" / 1 1/2"



**CIGAR ASHTRAY**  
**BLACK**  
**24357 • 1050742**  
130 \* 180 mm / 40 mm  
5 \* 7" / 1 1/2"



### EGOIST

For those who prefer a life untroubled by other people's points of view, the Egoist is the answer. Ingeniously formed in solid glass, it sits perfectly in the palm of your hand, yet can also be rested on any surface. Offered in transparent clear or black, the Egoist is a must-have for the solitary smoker.

designed by NUDE DESIGN TEAM



**PEN TRAY**  
**25652 • 1107920**  
120 \* 200 mm / 42 mm  
4 3/4 \* 7 3/4" / 1 3/4"



**CIGAR ASHTRAY**  
**25651 • 1107918**  
161 mm / 42 mm  
6 1/4" / 1 3/4"



### ACE

Inspired from the golf club and golf ball's unique texture, Ace is a delightful set consisting of four bold items. A cigar ashtray, a pen holder and high/lowball glasses. A perfect gift for golf lovers, reflecting NUDE's artisanal quality in lead-free\* crystalline.

\*NUDE Lead-Free Crystal Glass falls in the category 3 according to the European Directive 69/493/EEC (Crystal Directive) with no intentionally added lead.

designed by NUDE DESIGN TEAM



**CIGAR ASHTRAY**  
**24421 • 1091092**  
160 mm / 65 mm  
6 1/4" / 2 1/2"



### SHADE

SHADE



designed by ALEJANDRO RUIZ & NUDE DESIGN TEAM



CIGAR ASHTRAY

24997 • 1116617

160 mm / 43 mm

6 1/4" / 1 3/4"



ASHTRAY

13505 • 1116044

100 mm / 55 mm

4" / 2 1/4"



CIGAR ASHTRAY

25401 • 1076954

101 \* 147 mm / 55 mm

4 \* 5 3/4" / 2 1/2"



CIGAR ASHTRAY

24278 • 1086216

117 \* 164 mm / 25 mm

4 1/2 \* 6 1/2" / 1"



FUMMO

## FUMMO

Fumo is a solid piece of crystal clear glass, heavy and demonstrative, smooth to the touch. It's a personal ashtray, perfectly sized to sit on an armrest or side table. The bowl of the tray itself precludes any chance of ash being spilled. The deep groove leads from the bowl to the edge, wide enough to sustain the most Robusto of cigars. For the dashingly provocative woman, or the solidly stable man, the Fumo is a wonderful gift, and a beautiful adornment to any room.





**CANDLE HOLDER**  
**CLEAR**  
**38601 • 1199469**  
 180 mm / 282 mm  
 7" / 11"



**CANDLE HOLDER**  
**CLEAR**  
**38602 • 1199452**  
 140 mm / 212 mm  
 5 1/2" / 8 1/4"



**TEALIGHT HOLDER**  
**CLEAR**  
**38603 • 1199453**  
 100 mm / 63.5 mm  
 4" / 2 1/2"



**ILO**

Ilo is a set of 3 different sized candle holders, owning a sculptural look that brings a mesmerising ambience with its dome inspired structure. Different sizes of Ilo from pillar to tealight candle holders can be adapted to any setting from in or outdoor, suitable for cold winter nights or long summer nights. The combination of the handcrafted crystalline rippled glass of NUDE with the silky looking copper plate lets the candlelight twinkle and reflect with a playful optic effect, in your space.

\*The tealight holder is designed for electronic candle use only.



**SET OF 2 VOTIVES**  
**CLEAR**  
**28414 • 1055897**  
 81 mm / 64 mm  
 3 1/4" / 2 1/2"



**SET OF 2 VOTIVES**  
**SMOKE**  
**28414 • 1055900**  
 81 mm / 64 mm  
 3 1/4" / 2 1/2"



**SET OF 2 VOTIVES**  
**BLUE**  
**28414 • 1075481**  
 81 mm / 64 mm  
 3 1/4" / 2 1/2"



**SET OF 2 VOTIVES**  
**CLEAR**  
**28415 • 1055904**  
 100 mm / 80 mm  
 4" / 3 1/4"



**SET OF 2 VOTIVES**  
**SMOKE**  
**28415 • 1055907**  
 100 mm / 80 mm  
 4" / 3 1/4"



**SET OF 2 VOTIVES**  
**BLUE**  
**28415 • 1075483**  
 100 mm / 80 mm  
 4" / 3 1/4"

**JOY**

Delightful to touch, they are bold and precise. And while providing both light and warmth, they are almost guaranteed to provoke conversation.







SET OF 2  
VOTIVES

RED

28414 • 1055899

81 mm / 64 mm

3 1/4" / 2 1/2"



SET OF 2  
VOTIVES

AMBER

28414 • 1055898

81 mm / 64 mm

3 1/4" / 2 1/2"



SET OF 2  
VOTIVES

RED

28415 • 1055906

100 mm / 80 mm

4" / 3 1/4"



SET OF 2  
VOTIVES

TURQUOISE

28415 • 1055909

100 mm / 80 mm

4" / 3 1/4"



SET OF 2  
VOTIVES

AMBER

28415 • 1055905

100 mm / 80 mm

4" / 3 1/4"







by *Ayşe Birsel*  
*Bibi Seck*

P A R O L E S P A R O L E S

WHY NOT

BEEF

YOLO

BRAVO

NAMASTE





CHRISTMAS EDITION



PAPERWEIGHT  
RED - GREEN  
25532 • 1116620  
164 \* 64 mm / 40 mm  
6 1/2 \* 2 1/2" / 1 1/2"



PAPERWEIGHT  
CLEAR  
25533 • 1116621  
164 \* 64 mm / 40 mm  
6 1/2 \* 2 1/2" / 1 1/2"



PAPERWEIGHT  
CLEAR  
25516 • 1108212  
164 \* 64 mm / 40 mm  
6 1/2 \* 2 1/2" / 1 1/2"



PAPERWEIGHT  
CLEAR  
25512 • 1108208  
164 \* 64 mm / 40 mm  
6 1/2 \* 2 1/2" / 1 1/2"



PAPERWEIGHT  
CLEAR  
25518 • 1108214  
164 \* 64 mm / 40 mm  
6 1/2 \* 2 1/2" / 1 1/2"



PAPERWEIGHT  
CLEAR  
25510 • 1108206  
164 \* 64 mm / 40 mm  
6 1/2 \* 2 1/2" / 1 1/2"



PAPERWEIGHT  
CLEAR  
25514 • 1108210  
164 \* 64 mm / 40 mm  
6 1/2 \* 2 1/2" / 1 1/2"

## PAROLES PAROLES

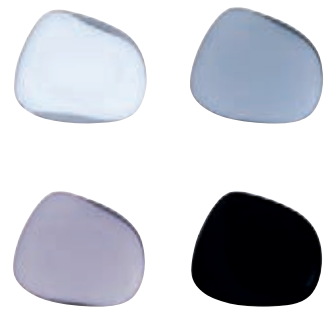
Paroles Paroles Collection is a family of paperweights expressing words that matter at work. 'BRAVO' is to remind you that you're doing great; 'RELAX' is a little encouragement to go easy on yourself; 'WHY NOT' is to inspire you to think outside the box and so on. The collection started with 'BRAVO.' A gift was needed to give to friends and collaborators to celebrate their efforts and success. You often send an email or call people to say "Bravo!", but it is very fleeting. It doesn't stay. Something, lasting was wanted, something that you can have on your desk every day to remind you that your great work is being recognized. After 'BRAVO'; we imagined other unique feelings and sentiments we wanted to gift to others, and with that, the collection grew to include more of these sentiments—'BFF' (Best Friends Forever), 'YOLO' (You Only Live Once), 'WHY NOT.' Together with 'NAMASTE' (I bow to you), each one of them is meant to make someone in your life happy! For holiday season, get 'HoHoHo' to spread good cheer.



PAROLES PAROLES PAROLES PAROLES



PEBBLES



HANGER / KNOB  
 OPAL WHITE • OPAL GREY  
 OPAL PINK • BLACK  
 28408 • 1075193 • 1075196  
 1075202 • 1075206  
 97 \* 116 mm / 45 mm  
 3 3/4 \* 4 1/2" / 1 3/4"



HANGER / KNOB  
 OPAL WHITE • OPAL GREY  
 OPAL PINK • BLACK  
 28409 • 1075211 • 1075215  
 1075219 • 1075241  
 84.5 \* 84 mm / 45 mm  
 3 1/4 \* 3 1/4" / 1 3/4"



HANGER / KNOB  
 OPAL WHITE • OPAL GREY  
 OPAL PINK • BLACK  
 28410 • 1075246 • 1075250  
 1075254 • 1075258  
 71.5 / 77.5 mm / 45 mm  
 2 3/4 \* 3" / 1 3/4"



ORCHID POT  
 OPAL PINK & OPAL WHITE  
 92492 • 1050836  
 180 mm / 215 mm  
 7" / 8 1/2"



ORCHID POT  
 SMOKE & OPAL WHITE  
 92492 • 1050837  
 180 mm / 215 mm  
 7" / 8 1/2"

ROOTS

## PEBBLES

A decorative dish in opal white, opal lila, opal gray and black with a softly edged rim. The shape is both organic and fluid, echoing nature and a sense of the sea. Can be used flat, or as a decorative piece hanging (from a door handle or peg). Reversible, it can also be employed as a paperweight or as a place marker. A delightful thing that adds character to any space, the different varieties of Pebbles mean they can be mixed to create an environment of your own choosing.



## ROOTS

NUDE have created a portable herb garden for your kitchen. Sitting on a concrete base, the two colored crystalline pots use a hydroponic system to irrigate the plants. Perfect for a kitchen top or windowsill, the Roots garden makes a wonderful gift, promising the fabulous aroma of fresh herbs all year round.





L I F E S T Y L E

L I G H T I N G







designed by TOMAS KRAL

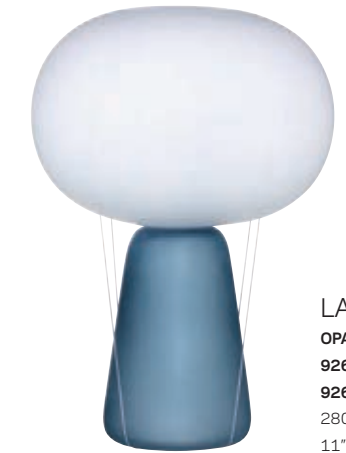
GLASS IS  
TOMORROW



LAMP  
OPAL WHITE  
92600 • 1076963  
92600 • 1082436  
280 mm / 402 mm  
11" / 8 + 7 3/4"



LAMP  
OPAL PINK  
92600 • 1076964  
92600 • 1082437  
280 mm / 402 mm  
11" / 8 + 7 3/4"



LAMP  
OPAL BLUE  
92600 • 1076965  
92600 • 1082438  
280 mm / 402 mm  
11" / 8 + 7 3/4"

**BLOW**



An extraordinary and original piece created by the Swiss-based and award-winning designer Tomas Kral. "The two parts of the lamp are assembled together by simple rubber bands which refer to the top of a hot-air balloon. This minimal connection creates a tension sufficient to maintain the stability of the lamp, and also allows quick disassembly for changing the bulb." Light and airy, the lamp, though sturdy, seems to float.

designed by NUDE DESIGN TEAM



LAMP  
CLEAR  
15477 • 1050515  
15477 • 1082424  
328 mm / 265 mm  
13" / 10 1/2"



LAMP  
SMOKE  
15477 • 1076922  
15477 • 1082425  
328 mm / 265 mm  
13" / 10 1/2"



LAMP  
OPAL WHITE  
15477 • 1076923  
15477 • 1082426  
328 mm / 265 mm  
13" / 10 1/2"

**MIRA**



For a slightly softer look, the Mira lamp opens out like a ballgown, sending a wider beam of light. Incorporating the same concrete socket of its brother lamp, the Mira maintains an air of simplicity while still offering fantastic personality and style.

BLOW

MIRA





designed by NUDE DESIGN TEAM



LAMP  
CLEAR  
15476 • 1050513  
15476 • 1082427  
310 mm / 334 mm  
12 1/4" / 13 1/4"



LAMP  
OPAL WHITE  
15476 • 1076919  
15476 • 1082429  
310 mm / 334 mm  
12 1/4" / 13 1/4"



LAMP  
SMOKE  
15476 • 1076918  
15476 • 1082428  
310 mm / 334 mm  
12 1/4" / 13 1/4"



LAMP  
SMOKE  
15586 • 1086024  
15586 • 1095988  
220 mm / 226 mm  
8 3/4" / 9"



LAMP  
SMOKE  
15566 • 1076820  
15566 • 1082430  
387 mm / 254 mm  
15 1/4" / 10"



LAMP  
SMOKE  
15567 • 1076824  
15567 • 1082431  
196 mm / 405 mm  
7 3/4" / 16"

MONO

**MONO**

A superb lamp, minimal in design yet strong in attitude, the Mono is made from blown unworked glass. Determinedly non-ornamental, it retains a strong sense of style, its concrete socket working in perfect balance with the simplicity of the glass itself. Embodying loft living, the Mono is a stunning centrepiece for any room.



E R D E M A K A N



by *Erdem Akkan*

O R I O N





designed by ERDEM AKAN



SIDE LAMP  
15478 • 1050517  
15478 • 1082423  
320 mm / 320 mm  
12 1/2" / 12 1/2"



SIDE LAMP  
15478 • 1064373  
15478 • 1082422  
320 mm / 320 mm  
12 1/2" / 12 1/2"

ORION

A truly dramatic addition to any room, the Orion night light is an extraordinary piece of design. Essentially simple in its make-up, the crystal glass shade resting on a solid concrete base hails back to the Sci-Fi movies of the 1950s. The brushed surface running across the top of the glass means the light is diffused across the room, providing a soft and soothing glow perfect for bedrooms or any relaxing space.



BEDROOM LAMP  
CLEAR  
15459 • 1049716  
15459 • 1082420  
228 mm / 263 mm  
9" / 10 1/4"



BEDROOM LAMP  
SMOKED GREEN  
15459 • 1050511  
15459 • 1082421  
228 mm / 263 mm  
9" / 10 1/4"

TREE

A clear or green glass night lamp set on an ingenious oak base. The soft curves of the shade are both homely and inviting, the light creating a soft glow around the room. The sympathetic combination of glass and wood suggests both nature and nurture.



designed by PENTAGON DESIGN



LAMP  
15570 • 1076913  
15570 • 1082432  
205 mm / 240 mm  
8" / 9 1/2"



SMOOTH

The Smooth bedside lamp is comforting, minimal, soft, and unobtrusive. Its space-age design emits a warm glow, the feel of the lamp organic, the textures tactile. The main shade itself is made of opaque glass, contrasting effectively with the slate stone base, the matt and gloss finishes acting in harmony. Such is the skill of NUDE's glassblowers, the density of the light gently changes as it hits different areas of the lamp. The Smooth is an endlessly fascinating thing, dreamy yet practical, simple yet unique.



ORION

TREE

SMOOTH



DRINKWARE & SERVEWARE

Z E R O







**RED WINE GLASS**  
32253 • 1204043  
720 cc / 216 mm  
24 1/4 oz / 8 1/2"



**WHITE WINE GLASS**  
32261 • 1204045  
400 cc / 201 mm  
13 1/2 oz / 8"



**SET OF 2 GLASSES**  
22609 • 1204048  
470 cc / 115 mm  
16 oz / 4 1/2"



**RED WINE GLASS**  
32258 • 1204047  
500 cc / 223 mm  
17 oz / 8 3/4"



**WHITE WINE GLASS**  
32252 • 1204046  
410 cc / 208 mm  
13 3/4 oz / 8 1/4"



**CHAMPAGNE GLASS**  
32260 • 1204044  
233 cc / 228 mm  
7 3/4 oz / 9"



**SET OF 2 GLASSES**  
22608 • 1204030  
480 cc / 114 mm  
16 1/4 oz / 4 1/2"



GHOST ZERO / BELLY

GHOST ZERO / TULIP



# BEAUTIFULLY STRONG

2x Stronger Stem\*

35% Stronger Bowl

Handmade

Lead-Free\* Crystal

Dishwasher Safe\*

Resilient up to 13°  
(According to in-house method)



Stem Zero

\*These flawlessly handmade glasses can be washed in dishwashers up to 2,000 cycles. They have been proven to be resilient against stem and bowl impact tests according to DIN 52295 / Testing of glass - Pendulum impact test compared to standard glasses with the same thickness.

\*NUDE Lead-Free Crystal Glass falls in the category 3 according to the European Directive 69/493/EEC (Crystal Directive) with no intentionally added lead.

Scan to see  
the introduction  
of Stem Zero.







**RED WINE GLASS**  
**32306 • 1116553**  
**32306 • 1116554 (Set of 2)**  
 800 cc / 270 mm  
 27 oz / 10 3/4"



**WHITE WINE GLASS**  
**32307 • 1116609**  
**32307 • 1116610 (Set of 2)**  
 630 cc / 250 mm  
 21 1/4 oz / 9 3/4"



**SPARKLING WINE GLASS**  
**32308 • 1116614**  
**32308 • 1116615 (Set of 2)**  
 445 cc / 269 mm  
 15 oz / 10 1/2"



**RED WINE GLASS**  
**32019 • 1101740**  
**32019 • 1101729 (Set of 2)**  
 1000 cc / 249 mm  
 33 3/4 oz / 9 3/4"



**WHITE WINE GLASS**  
**32020 • 1101741**  
**32020 • 1101730 (Set of 2)**  
 700 cc / 236 mm  
 23 3/4 oz / 9 1/4"



**CHAMPAGNE GLASS**  
**32021 • 1101742**  
**32021 • 1101731 (Set of 2)**  
 300 cc / 260 mm  
 10 1/4 oz / 10 1/4"



**SET OF 2 GLASSES**  
**22602 • 1107882**  
 550 cc / 114 mm  
 18 1/2 oz / 4 1/2"



**STEM ZERO / GRACE**

NUDE's Stem Zero / Grace glasses reinterpret the traditional wine glass, offering an impressive design employing sharper and elegant lines. Grace also incorporates NUDE's well-known elements of clarity, strength and lightness, allowing wine to be enjoyed at the very highest level. Embracing a classic sense of sophistication, Grace is refined, natural and glamorous, much like the inspirational movie star herself...



**STEM ZERO / VOLCANO**

Stem Zero is a simple and elegant range of highly sophisticated glassware made to satisfy the most discerning wine connoisseur. The glass is so fine and so light that it defies belief. Such is the remarkable quality of the glass that it creates a sensation of weightlessness, that the wine is being held by an invisible force, allowing you to savour the aroma and taste of wine in a way that, until now, was considered unimaginable.



STEM ZERO / GRACE

STEM ZERO / VOLCANO



designed by NUDE DESIGN TEAM



**MASTER  
GLASS**  
32160 • 1107268  
32160 • 1107269 (Set of 2)  
420 cc / 220 mm  
14 1/4 oz / 8 3/4"

**STEM ZERO / MASTER**



Like a master key used to open any lock, the Master Glass can be used to drink any type of wine wherever you may be. Dining out or tasting with friends, the connoisseur need no longer rely on the choice of glasses available—or not available—in a pinch. When tasting at home, the specially shaped Stem Zero glasses are each ideal for drinking either delicate or full-bodied whites, elegant or powerful reds or champagne. The Master Glass, however, has been hand-crafted in a single shape that represents the optimal compromise for drinking any wine, anywhere.



**RED WINE  
GLASS**  
32249 • 1107723  
32249 • 1116036 (Set of 2)  
510 cc / 237.5 mm  
17 1/4 oz / 9 1/4"



**WHITE WINE  
GLASS**  
32248 • 1107721  
32248 • 1116035 (Set of 2)  
420 cc / 227 mm  
14 1/4 oz / 9"



**CHAMPAGNE  
GLASS**  
32250 • 1107725  
32250 • 1116037 (Set of 2)  
285 cc / 235 mm  
9 3/4 oz / 9 1/4"

**STEM ZERO / TRIO**





designed by NUDE DESIGN TEAM



**ELEGANT RED WINE GLASS (L)**  
32016 • 1101737  
32016 • 1101726 (Set of 2)  
950 cc / 237 mm  
32 1/4 oz / 9 1/4"



**ELEGANT RED WINE GLASS (M)**  
32017 • 1101738  
32017 • 1101727 (Set of 2)  
650 cc / 225 mm  
22 oz / 8 3/4"



**FULL BODIED WHITE WINE GLASS**  
32027 • 1101744  
32027 • 1101733 (Set of 2)  
750 cc / 199 mm  
25 1/4 oz / 7 3/4"



**CHAMPAGNE GRAND CRU GLASS**  
32030 • 1101746  
32030 • 1101735 (Set of 2)  
450 cc / 242 mm  
15 1/4 oz / 9 1/2"



**POWERFUL RED WINE GLASS**  
32024 • 1101743  
32024 • 1101732 (Set of 2)  
550 cc / 237 mm  
18 1/2 oz / 9 1/2"



**DELICATE WHITE WINE GLASS**  
32029 • 1101745  
32029 • 1101734 (Set of 2)  
450 cc / 229.5 mm  
15 1/4 oz / 9"



**CHAMPAGNE GLASS**  
32018 • 1101739  
32018 • 1101728 (Set of 2)  
300 cc / 257 mm  
10 1/4 oz / 10"



**SET OF 2 GLASSES**  
22365 • 1101736  
450 cc / 115 mm  
15 1/4 oz / 4 1/2"

**STEM ZERO / VERTIGO**



The lightness of the glassware focuses all attention on the senses. The stem is precise, the lip gossamer-thin, the bowl delicate. Everything works to accentuate touch, taste and smell.



STEM ZERO / VERTIGO



DRINKWARE & SERVEWARE

W I N E





designed by NUDE DESIGN TEAM

DREAM PARADE



reddot winner 2023

CHAMPAGNE GLASS  
 SILVER COATED PVD  
 32338 • 1204051  
 182 cc 280 mm  
 6 1/2 oz 11"

### DREAM PARADE



After saying "Yes!", the newlyweds toast each other with champagne and celebrate the beginning of their new life together. This unique glassware set highlights this special celebration of love, commemorating an unforgettable moment. The set is designed especially for newly married couples and features elegant, customized gift-packaging. Inspired by the highly symbolic koi fish, closely associated with the yin-yang concept in eastern philosophy, this fine pair of glassware represents the contrasts that make up life itself, emphasizing that neither can exist without the other. The meticulously designed set is an ideal gift for a partner, or a thoughtful wedding present for a couple who wish to commemorate this special occasion!





WINE  
DECANTER  
**28206 • 1050501**  
1000 cc / 217 mm / 245 mm  
33 3/4 oz / 8 1/2" / 9 3/4"



WINE  
DECANTER  
**28206 • 1075163**  
1000 cc / 217 mm / 245 mm  
33 3/4 oz / 8 1/2" / 9 3/4"



SET OF 2  
WINE GLASSES  
**12783 • 1057839**  
350 cc / 115 mm  
11 3/4 oz / 4 1/2"



MAGNUM  
WINE  
DECANTER  
**BLACK**  
**28196 • 1050526**  
4000 cc / 202 mm / 350 mm  
135 1/4 oz / 8" / 13 3/4"

## BALANCE

The Balance decanter and matching set of glasses have been ingeniously designed to remain stable while revolving. This proves an irresistible effect, the swirl of the liquid reflecting the energy in a room. The way the glass turns on its axis feels playful and seductive in equal measure, while also gently aerating the liquid. A guaranteed conversation piece.



## CANTINA

A big beast of a decanter, this is a hugely impressive item guaranteed to turn heads at any party or gathering. In black or clear lead-free\* crystal, the Cantina holds a full Magnum of wine. Named after the wineries in Italy and Spain, the Cantina is a must for all festive occasions, bringing joy and delight to family and friends.



\*NUDE Lead-Free Crystal Glass falls in the category 3 according to the European Directive 69/493/EEC (Crystal Directive) with no intentionally added lead.





SET OF 2  
RED WINE  
GLASSES

**66074 • 1080173**  
640 cc / 245 mm  
21 3/4 oz / 9 3/4"



SET OF 2  
RED WINE  
GLASSES

**66076 • 1081357**  
500 cc / 230 mm  
17 oz / 9"



SET OF 2  
WHITE WINE  
GLASSES

**66072 • 1080174**  
390 cc / 215 mm  
13 1/4 oz / 8 1/2"

### CLIMATS



Three deceptively simple wine glasses, the Climats range is brilliantly adaptable for both formal and relaxed occasions. Including a fuller bodied glass for bigger red wines, a slimmer glass for rosé, and a medium glass for whites, each item is perfectly balanced with a fine stem and sturdy base. The lip of the glass is crisp and defined, narrowly tapering towards the brim in order to capture the fullness of the wine's aromas. These are a set of glasses you will want to use again and again.



VASE  
**28453 • 1076521**  
90 mm / 200 mm  
2" / 7 3/4"



CANDLE HOLDER  
**28454 • 1076523**  
90 mm / 128 mm  
3 1/2" / 5"



BOWL  
**28437 • 1075300**  
130 mm / 103 mm  
5" / 4"



CARAFE  
**28436 • 1076517**  
2300 cc / 60 mm / 250 mm  
81 oz / 2 1/4" / 9 3/4"



SET OF 2  
WINE  
GLASSES  
**22266 • 1076519**  
360 cc / 128 mm  
12 3/4 oz / 5"

### CONTOUR



An innovative range comprising of an elegant crystal vases, bowls, candle holder, carafe and wine glasses. At once solid yet ethereal, the glassware seem to disappear as they reach their apex, allowing the contents to take over the drama.



designed by RON ARAD



LIMITED EDITION

WINE DECANTER  
**28216 • 1049628**  
 750 cc / 265 mm / 250 mm  
 25 1/4 oz / 10 1/2" / 9 3/4"

DECANTERING

**DECANTERING**

As someone once said, "Wine is just a conversation waiting to happen," and it is in that spirit the DecanteRing exists. A symmetrical cylinder of perfectly-blown glass, this beautiful artefact enables the wine to breathe properly, while letting light and movement play around the liquid, a constant reminder of its intoxicating properties. The degree of craftsmanship involved is extraordinary, the glass cut and polished to perfection.





FANTASY



SET OF 2  
ALL PURPOSE  
GLASSES  
**66199 • 1080745**  
770 cc / 270 mm  
26 oz / 10 3/4"



SET OF 2  
CHAMPAGNE  
GLASSES  
**66160 • 1081361**  
290 cc / 270 mm  
9 3/4 oz / 10 3/4"



SET OF 2  
COGNAC  
GLASSES  
**66103 • 1081355**  
870 cc / 175 mm  
29 1/2 oz / 7"



SET OF 2  
RED WINE  
GLASSES  
**31963 • 1075160**  
740 cc / 230 mm  
25 oz / 9"



SET OF 2  
WHITE WINE  
GLASSES  
**31962 • 1075158**  
480 cc / 215 mm  
16 1/4 oz / 8 1/2"



SET OF 2  
CHAMPAGNE  
GLASSES  
**31964 • 1075162**  
240 cc / 250 mm  
8 oz / 9 3/4"

HEADS UP

## FANTASY

A set of three elegant and thin-stemmed glasses. Exquisitely fashioned, the glasses are soft and bulbous, allowing the liquid to breathe, before tapering to a crisp rim for a highly-refined and enjoyable drinking experience. Perfect for a special occasion, the Fantasy collection will imbue any cocktail or dinner party with a sense of panache, the delicate designs bringing high-style to any gathering.



## HEADS UP

Heads Up collection is designed by the always stylish Englishman Nigel Coates. The selection, like the designer himself, is confident, charming, yet eminently usable. The handblown tumbler is cleverly ridged, almost inviting the user to hold it in their hand. The wine glasses are also extremely tactile. The champagne glass is as charming as a cocktail dress and demands to be admired. At once playful yet refined, Heads Up is a marvellously individual and memorable range. The British designer Nigel Coates is renowned for his elegance and style. But like all the best Englishmen, he also possesses a wry sense of humour. His Heads Up collection, especially designed for NUDE, incorporates all of those elements.





**DECANTER**

**CLEAR**  
**38607•1201891**  
2300 cc / 188 mm / 343 mm  
77 3/4 oz / 7 1/2" / 13 1/2"



**DECANTER WITH A MARBLE PLATE**

**CLEAR**  
**38607•1204181**  
2300 cc / 188 mm / 353 mm  
77 3/4 oz / 7 1/2" / 14"

J A Z Z

**JAZZ**

Jazz carafe pushes the boundaries of handcrafted production by combining impeccable craftsmanship and exceptional aesthetics. Thanks to its fine structure paired with an elegant and flowing shape, the carafe complements the wine with its natural form. The focus of the design is the wine's journey from the carafe to the glass. Jazz carafe's light and thin composition allows wine lovers to feel the entire weight of the wine and its journey in the carafe, while its ergonomic structure provides an easy grip. The carafe's thin mouth and light structure allow for comfortable use.





designed by INGA SEMPÉ



WINE  
CARAFE  
**92670 • 1086044**  
850 cc / 113 mm / 266 mm  
28 3/4 oz / 4 1/2" / 10 1/2"



SET OF 2  
RED WINE  
GLASSES  
**31994 • 1086018**  
180 cc / 134 mm  
6 oz / 5 1/4"



SET OF 2  
WHITE  
WINE GLASSES  
**31993 • 1086016**  
150 cc / 128 mm  
5 oz / 5"

JOUR

## JOUR

Jour is a collection of wine glasses and a wine carafe. The essential shape of the wine glasses is square, but they widen towards the brim, the lip gently softened and curved outwards, providing a delicate contrast to the straight lines. The longer red wine glass is bisected by a delicate ridge, providing a subtle yet characterful feature. The decanter is a solid and reassuring piece of design, echoing the same lines of the glasses, and with a solid glass stopper.







designed by NUDE DESIGN TEAM



SET OF 2  
RED WINE  
GLASSES  
**66078 • 1202714**  
790 cc / 217 mm  
26 3/4 oz / 8 1/2"



SET OF 2  
RED WINE  
GLASSES  
**66093 • 1052466**  
570 cc / 207 mm  
19 1/4 oz / 8 1/4"



SET OF 2  
WHITE WINE  
GLASSES  
**66092 • 1052465**  
425 cc / 198 mm  
14 1/4 oz / 7 3/4"



SET OF 2  
CHAMPAGNE  
GLASSES  
**66091 • 1052464**  
245 cc / 238 mm  
8 1/4 oz / 9 1/4"



SET OF 4  
HIGHBALL  
GLASSES  
**64003 • 1052141**  
480 cc / 154 mm  
16 1/4 oz / 6"



SET OF 4  
LONG DRINK  
GLASSES  
**64002 • 1052140**  
330 cc / 140 mm  
11 1/4 oz / 5 1/2"



SET OF 4  
WHISKY  
GLASSES  
**64001 • 1052139**  
385 cc / 82 mm  
13 oz / 3 1/4"

## MIRAGE

Simple yet distinguished, Mirage is a machine-tooled range covering the most requested type of glasses. Each one is precision-made and perfectly weighted. The glasses themselves angle slightly towards the rim, giving a distinctive look to the collection. A perfect starter set for new homes, and a wonderful wedding present.





designed by ERDEM AKAN



SET OF 2  
CHAMPAGNE  
GLASSES  
**31971 • 1076993**  
175 cc / 212 mm  
6 oz / 8 1/4"



SET OF 2  
WINE  
GLASSES  
**31972 • 1076994**  
320 cc / 180 mm  
10 3/4 oz / 7"



SET OF 2  
LONG DRINK  
GLASSES  
**22286 • 1076995**  
530 cc / 120 mm  
18 oz / 4 3/4"



SET OF 2  
WHISKY  
GLASSES  
**22287 • 1076996**  
380 cc / 90 mm  
12 3/4 oz / 3 1/2"



SET OF 2  
GLASSES  
**22288 • 1076997**  
260 cc / 60 mm  
8 3/4 oz / 2 1/4"

## NEO

A set of five items in clear crystal glass, the Neo range includes two well-balanced glasses, one for long drinks, the other for whisky. There is also a long-stemmed champagne glass, and a crisply-defined wine glass. To complete the set, NUDE has created a matching mini bowl, perfect for tapas, nuts or dips. Each item is gently flared outwards towards the rim, the glass softly-bevelled, creating a pleasant sensation in the hand, while at the same time softly refracting the light.



designed by JOE DOUCET



WINE CARAFE  
**28656 • 1091394**  
3200 cc / 196 mm / 300 mm  
108 1/4 oz / 7 3/4" / 11 3/4"



WINE CARAFE  
**28725 • 1091089**  
1750 cc / 156 mm / 240 mm  
59 1/4 oz / 6 1/4" / 9 1/2"

## O<sub>2</sub>

The O<sub>2</sub> carafes are solid wide-bottomed decanters made from the highest quality crystal glass. The glass has been delicately moulded with a series of dramatic intersecting perpendicular lines, creating a sense of depth and character. The bottom of the carafes are softly domed, letting light into the base of the item.



designed by NUDE DESIGN TEAM



WINE DECANTER  
CLEAR  
**16025 • 1208538**  
1750 cc / 226 mm / 270 mm  
59 1/4 oz / 9" / 10 3/4"

## OXYGEN

The Oxygen decanter, in clear glass, 1750 cc (holding two bottles of wine) is perfect for family gatherings or parties. The playful circular cork stopper with a modern edge is deftly imprinted with the NUDE logo.



O<sub>2</sub>  
O  
X  
Y  
G  
E  
N

O  
N  
E





SET OF 4  
BOURGOGNE  
GLASSES  
**64026 • 1052143**  
710 cc / 114 mm  
24 oz / 4 1/2"



SET OF 4  
BORDEAUX  
GLASSES  
**64025 • 1052144**  
610 cc / 120 mm  
20 3/4 oz / 4 3/4"



SET OF 4  
WHITE WINE  
GLASSES  
**64090 • 1052467**  
390 cc / 105 mm  
13 1/4 oz / 4 1/4"



SET OF 4  
SWEETS &  
SPIRITS GLASSES  
**64089 • 1052468**  
250 cc / 92 mm  
8 1/2 oz / 3 1/2"

PURE

## PURE



A range of exquisitely simple wine tumblers. Classically stylish, these can be used for both informal and formal affairs. Designed to appeal to a less traditional consumer, the Pure's zen-like tone works perfectly when it comes to a more relaxed decor and lifestyle. The glasses also feel wonderful in the hand.



designed by RON ARAD



WINE  
DECANTER  
28297 • 1050736  
2100 cc / 127 mm / 333 mm  
71 oz / 5" / 13"



WATER  
CARAFE  
28288 • 1049939  
1300 cc / 97 mm / 335 mm  
44 oz / 3 3/4" / 13 1/4"



SET OF 2  
WINE GLASSES  
31877 • 1049612  
450 cc / 232 mm  
15 1/4 oz / 9 1/4"



SET OF 2  
WATER GLASSES  
31878 • 1049619  
450 cc / 156 mm  
15 1/4 oz / 6 1/4"

## RED OR WHITE

A flirtatious range including a decanter, a carafe and two glasses. The way the glass leans mirrors the way people bend closer to hear a conversation or whisper a secret. The shape of the glass also makes reference to the tipsy-like state a party engenders. Also note the upside down wine glasses. No need to waste time when moving from white to red; a twist of the wrist and one can proceed uninterrupted.



designed by NUDE DESIGN TEAM



SET OF 2  
POLYVALENT  
GLASSES  
67091 • 1080828  
440 cc / 214 mm  
15 oz / 8 1/2"



SET OF 2  
RED WINE  
GLASSES  
67092 • 1080824  
610 cc / 235 mm  
20 3/4 oz / 9 1/4"



SET OF 2  
CHAMPAGNE  
GLASSES  
67094 • 1080832  
200 cc / 225 mm  
6 3/4 oz / 8 3/4"



SET OF 2  
RED WINE  
GLASSES  
67316 • 1112659  
530 cc / 223.5 mm  
2 3/4 oz / 8 3/4"

## REFINE

A set of four glasses, the Refine collection is appropriate for all wines and champagnes. The red wine glass comes in two options—a narrow and wide body—perfect for both medium and full-flavoured wines. The white wine glass, like the red, is subtle in design, the lower curvature of the glass either softly rounded, or slightly more flattened for a more distinctive grip. The champagne glass tapers ever so gently towards the rim, trapping the flavours while enhancing the drinking experience.



RED OR WHITE

REFINE



NEW

ROUND UP  
WATER  
GLASS

22436 • 1206990  
580 cc / 106 mm 4 1/4"  
20 1/2 oz / 3 1/2"



NEW

ROUND UP  
HIGHBALL

22433 • 1207018  
430 cc / 147 mm  
15 1/4 oz / 5 3/4"



NEW

ROUND UP  
WHISKY  
GLASS

22434 • 1207015  
410 cc / 90 mm 3 1/2"  
14 1/2 / 4 1/4"



SET OF 2  
WHITE WINE  
GLASSES

32011 • 1204834  
350 cc / 214 mm  
11 3/4 oz / 8 1/2"



SET OF 2  
RED WINE  
GLASSES

32012 • 1204818  
500 cc / 227 mm  
17 oz / 9"



SET OF 2  
COUPE  
GLASSES

32010 • 1204819  
400 cc / 154 mm  
13 1/2 oz / 6"



SET OF 2  
CHAMPAGNE  
GLASSES

32007 • 1204820  
200 cc / 253 mm  
6 3/4 oz / 10"



SET OF 2  
RED WINE  
GLASSES

32012 • 1116701  
500 cc / 227 mm  
17 oz / 9"



SET OF 2  
WHITE WINE  
GLASSES

32011 • 1116700  
350 cc / 214 mm  
11 3/4 oz / 8 1/2"



SET OF 2  
COUPE  
GLASSES

32010 • 1116699  
400 cc / 154 mm  
13 1/2 oz / 6"



SET OF 2  
CHAMPAGNE  
GLASSES

32007 • 1116698  
200 cc / 253 mm  
6 3/4 oz / 10"

ROUND UP



ROUND UP

This unique glassware consists of seven essential sizes. All items in this collection have specially designed rounded bottom form to help the wine poured down smoothly and keeping the delicate bouquet and tasteful aromas. Our elegant Round Up collection enhances the color of wines with optic texture that makes the lead-free\* crystal even more brilliant.

\*NUDE Lead-Free Crystal Glass falls in the category 3 according to the European Directive 69/493/EEC (Crystal Directive) with no intentionally added lead.



ROUND UP

ROUND UP



designed by NUDE DESIGN TEAM



CARAFE  
38451 • 1116025  
1750 cc / 171 mm / 266 mm  
59 1/4 oz / 6 3/4" / 10 1/2"



CARAFE  
38452 • 1116026  
1200 cc / 191 mm / 308 mm  
40 1/2 oz / 7 1/2" / 12 1/4"

VINI

VINI

Whatever the style setting, occasion or mood, there's a NUDE Vini carafe to match. Each design is carefully handmade from our finest lead-free\* crystal and destined to impress—whether used to serve your favourite tippable or admired solo for its aesthetic value.

\*NUDE Lead-Free Crystal Glass fall in the category 3 according to the European Directive 69/493/EEC (Crystal Directive) with no intentionally added lead





SET OF 2  
BORDEAUX  
GLASSES  
**66125 • 1052487**  
600 cc / 240 mm  
20 1/4 oz / 9 1/2"



SET OF 2  
POLYVALENT  
GLASSES  
**66122 • 1052483**  
430 cc / 217 mm  
14 1/2 oz / 8 1/2"



SET OF 2  
CHAMPAGNE  
GLASSES  
**66112 • 1052490**  
220 cc / 242 mm  
7 1/2 oz / 9 1/2"



WINE DECANTER  
**28302 • 1050940**  
750 cc / 147 mm / 230 mm  
25 1/4 oz / 5 3/4" / 9"



WINE DECANTER  
**28303 • 1208736**  
750 cc / 150 mm / 242 mm  
25 1/4 oz / 6" / 9 1/2"



SET OF 2  
ROSE WINE  
GLASSES  
**66113 • 1052489**  
320 cc / 220 mm  
10 3/4 oz / 8 3/4"



SET OF 2  
COUPE  
GLASSES  
**67144 • 1205777**  
185 cc / 160 mm  
6 1/4 oz / 6 1/4"

VINTAGE

VINTAGE

VINTAGE



NUDE's most comprehensive range: a glass for all seasons and for every occasion. You can be sure that, whatever the drink, the Vintage collection will provide the correct glass, ensuring a perfect experience every time.

VINTAGE





designed by RON ARAD



SET OF 2  
RED WINE  
GLASSES  
**31900 • 1050681**  
550 cc / 250 mm  
18 1/2 oz / 9 3/4"



SET OF 2  
WHITE WINE  
GLASSES  
**31901 • 1050683**  
350 cc / 235 mm  
11 3/4 oz / 9 1/4"



SET OF 2  
CHAMPAGNE  
GLASSES  
**31902 • 1050685**  
250 cc / 265 mm  
8 1/2 oz / 10 1/2"

WINE PARTY

## WINE PARTY

Ingenious, playful, intuitive and practical, the Wine Party range contains a series of glasses designed for the party experience. Their precisely-weighted stems allow them to be rested on surfaces, but also easily slipped into a pocket or purse. Hands are freed for more important purposes: greeting, rejecting, cajoling or gesticulating. For those reluctant to let go of their glass, the soft curve of the stem fits like a glove.









# NUDE X GIORGIO BARGIANI

NEW

I am Giorgio Bargiani, Assistant Director of Mixology at The Connaught, in London. As you might have caught, my last name, Bar-giani, and my family's hospitality business in Pisa, Italy, shaped my career. Passionate about hospitality, I worked in bars back home and then moved to the hôtellerie to sharpen my skills. I joined The Connaught in London in 2014, and that was very much a dream come true for me. While growing as a mixologist within the Connaught Bar family, I've always tried to find and share inspiration across different creative industries and countries, pushing the boundaries of my own craft and travelling the world. My partnership with NUDE now brings a natural extension of this vision, bringing to life my own glassware collection to inspire bartenders and drinkers around the world.

## Giorgio Bargiani

Best bartender  
of the year (2023)  
Assistant Director  
of Mixology at  
The Connaught Hotel



### Why NUDE?

Şişecam is one of the largest glass producers in the world and the world leader at glassware. So they are real industry experts and NUDE is its global design brand. In my profession, I always try to find new ways to create a personalised drinking experience for my guests and I found in NUDE the perfect partner in delivering delight. NUDE is a brand closely connected to the bar industry and caters to drinkers seeking more than just a drink. Like myself, they are after an experience.



### What's the inspiration behind the collection?

Versatility is the idea that guided me through the design of this collection. I wanted something that could adapt to various styles and tastes for personalised use by bartenders and drinkers. The idea being that elegance doesn't belong to just one specific style or context, but everyone can own it in their own way. It enhances the cocktail experience and suits both classic

and contemporary styles, adding creativity and flexibility to any bar setting.



### What's unique about this collection?

From a style point of view, it suits both classic and contemporary styles of cocktails and venues. Speaking about its design, a key feature is the stem, which adds elegance and keeps drinks at the right temperature. The open lines and convex design enhance versatility, allowing the glasses to suit various cocktails and giving each piece a sense of fluidity.



### What's the impact of a glass on a cocktail?

Glassware design is very important in the cocktail world. We might not realise it but the glass that we hold influences the drinking experience in how it reflects or displays colours in different ways, and also influences temperature and taste. Its weight and feel add enjoyment, making the right glass an essential feature to elevate a cocktail to a real experience.

## BAR/GIANI





designed by GIORGIO BARGIANI

NEW



NEW

SET OF 4  
COCKTAIL GLASS  
LONG  
CLEAR  
67244 • 1207946  
375 cc / 149 mm  
13 3/4 oz / 5 3/4"



NEW

SET OF 2  
MARTINI  
GLASSES  
CLEAR  
67214 • 1207967  
190 cc / 177 mm  
6 3/4 oz / 7"



NEW

SET OF 4  
COCKTAIL GLASS  
SHORT  
CLEAR  
67224 • 1207943  
320 cc / 107 mm  
10 3/4 US oz - 11 1/4 UK oz



NEW

SET OF 2  
COCKTAIL GLASS  
LONG STEM  
CLEAR  
67234 • 1207944  
330cc / 171 mm  
11 1/2 oz / 6 3/4"



NEW

MIXING GLASS  
CLEAR  
32383 • 1208510  
530 cc / 223.5 mm  
2 3/4 oz / 8 3/4"

BAR/GIANI

BAR/GIANI



The Bar/Giani collection, designed by mixologist Giorgio Bargiani, blends sleek design with elegant craftsmanship, meticulously created for classic cocktails or experimental serves. Each glass boasts clean lines and a refined silhouette, embodying an elegant minimalist aesthetic that enhances any drink. Firmly rooted in functionality, the must-have cocktailware range was designed to cater for a variety of styles and settings, enabling each bar and mixologist to make it their own.





designed by ALI BAKOVA

NEW



SET OF 2  
COCKTAIL  
GLASSES

CLEAR  
22056 • 1206387  
204 cc / 100 mm  
7 1/4 oz / 4"

NEW



SET OF 2  
COCKTAIL  
GLASSES

CLEAR  
22055 • 1206386  
315 cc / 160 mm  
11 oz / 6 1/4"

NEW



SET OF 2  
COCKTAIL  
GLASSES

CLEAR  
22054 • 1206391  
313 cc / 136 mm  
11 oz / 5 1/4"

NEW



SET OF 2  
COCKTAIL  
GLASSES

CLEAR  
22057 • 1206389  
278 cc / 127 mm  
9 3/4 o / 5"

## GRAVITY

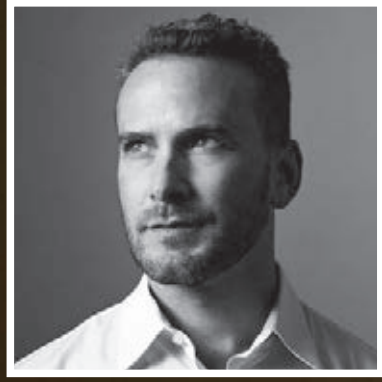


The Gravity collection is specially designed to mimic the magical atmosphere of space and that mystical moment when time stands still. Consisting of four individual designs, the Gravity collection brightens users' lives with narrow, filled bases embodying timelessness and volumes that seem gently placed in the innovative glassware. Adding a touch of the extraordinary to everyday life, the Gravity collection offers the elegant aesthetics of handmade glass, making every sip of your beverage a special treat.





J O E D O U C E T



by  
*Joe Doucet*

A L B A





designed by JOE DOUCET

designed by NUDE DESIGN TEAM

A L B A



WHISKY CARAFE  
28675 • 1086003  
1800 cc / 160 mm / 200 mm  
60 3/4 oz / 6 1/4" / 7 3/4"



SET OF 2 WHISKY GLASSES  
22340 • 1082999  
260 cc / 87 mm  
8 3/4 oz / 3 1/2"



WHISKY CARAFE  
28676 • 1116630  
1500 cc / 300 mm  
50 3/4 oz / 11 3/4"



SET OF 2 HIGHBALL GLASSES  
22341 • 1086001  
390 cc / 120 mm  
13 1/4 oz / 4 3/4"

## ALBA

'Alba' is Gaelic for Scotland. The collection pays tribute to the spiritual home of whisky. The elegant glasses are punctuated by a hand-engraved and cleverly deconstructed tartan pattern. Each glass is heavy-bottomed, and each carefully tapers towards the brim, holding in the subtle aromas. The decanters, also incorporating the ingenious tartan etching, are punctuated by a unique stopper which leans omnidirectionally, inviting the more dedicated whisky lover to point the stopper in the direction of Scotland.



A C E



SET OF 2 LONG DRINK GLASSES  
22607 • 1107916  
460 cc / 154 mm  
15 1/2 oz / 6"



SET OF 2 WHISKY GLASSES  
22606 • 1107914  
350 cc / 94 mm  
11 3/4 oz / 3 3/4"

## ACE

Inspired by the golf club and golf ball's unique texture, Ace is a delightful set consisting of four bold items: a cigar ashtray, a pen holder and high/lowball glasses. A perfect gift for golf lovers, reflecting NUDE's artisanal quality in lead-free\* crystalline.



designed by ALI BAKOVA

A R C H



BOWL  
28266 • 1049744  
470 cc / 120 mm / 80 mm  
16 oz / 4 3/4" / 3 1/4"



SET OF 2 WHISKY GLASSES  
22153 • 1049891  
300 cc / 90 mm  
10 1/4 oz / 3 1/2"



WHISKY BOTTLE  
92572 • 1049901  
1000 cc / 130 mm / 195 mm  
33 3/4 oz / 5" / 7 3/4"

## ARCH

A sophisticated yet witty piece of craftsmanship, the Arch whisky bottle, a set of two glasses, and a matching bowl are a group of perfectly balanced items that seem to defy logic but sit solidly on any surface. The subtle curvature of the glass base reflects the delightful swirl of a single malt, creating a sense of energy to an activity often perceived to be placid. The pieces have a subtle interlocking design that allows them to fit together imaginatively.



\*NUDE Lead-Free Crystal Glass falls in the category 3 according to the European Directive 69/493/EEC (Crystal Directive) with no intentionally added lead.

Y O U M E U S



by *Youmeus*

B I G T O P





BIG TOP



BOWL

**38692 • 1208074**  
55 mm  
2 1/4"

SET OF 4 HIGHBALL GLASSES

**64132 • 1100887**  
300 cc / 145 mm  
10 1/4 oz / 5 3/4"

SET OF 4 HIGHBALL GLASSES

**64152 • 1100888**  
340 cc / 161 mm  
11 1/2 oz / 6 1/4"

SET OF 4 HIGHBALL GLASSES

**64162 • 1100886**  
430 cc / 175 mm  
14 1/2 oz / 7"



SET OF 4 WHISKY SOF GLASSES

**64122 • 1100884**  
270 cc / 80 mm  
9 1/4 oz / 3 1/4"



SET OF 4 WHISKY DC GLASSES

**64142 • 1100885**  
320 cc / 88 mm  
10 3/4 oz / 3 1/2"



SET OF 2 COUPE GLASSES

**67306 • 1112790**  
235 cc / 151.5 mm  
8 oz / 6"



**BIG TOP**



The Big Top collection focuses on serving, and is built from a combination of quality materials and finishes. Each piece has been designed with an eye to the magical, delivering a joyful, sophisticated and show-stopping experience. London-based Youmeus seeks out ambitious clients and, through design, makes them relevant. Through their philosophy and creativity, Youmeus unlock radical and imaginative ideas, glamorous, playful and savvy visuals, and generate new opportunities for brands on the vanguard of their industries. Introducing the newest addition to the Big Top glassware collection: the Big Top Bowl. This stunning centerpiece is designed to elevate any cocktail experience. Handcrafted in crystalline, it is ideal for serving a curated selection of gourmet garnishes and luxury snacks, all perfectly chosen to complement your cocktails. Our aim with the design was to capture the spirit of the circus, incorporating playful elements and bold geometry reminiscent of the Big Top.

CAMP



WHISKY BOTTLE

**92661 • 1082995**  
1500 cc / 200 mm \* 90 mm / 245 mm  
50 3/4 oz / 7 3/4 \* 3 1/2" / 9 3/4"

DOF WHISKY GLASS

**22331 • 1082996**  
470 cc / 125 mm  
16 oz / 5"

SOF WHISKY GLASS

**22330 • 1082997**  
350 cc / 100 mm  
11 3/4 oz / 4"

**CAMP**



The Camp collection consists of a decanter and two matching glasses. The glasses are beautifully styled, both heavy-bottomed and feel satisfying in the hand. The decanter has been designed to deliberately reflect a traditional hip flask, an item often passed around a roaring campfire. The integrated brass 'X' coasters at the base of the items suggest the warmth emanating from burning logs, not dissimilar to the feeling one gets from tasting a great whisky. The decanter is finished with a solid glass stopper, sitting perfectly in the neck of the bottle. The result is a stylish and imaginative collection, full of character and originality.





SET OF 4 WHISKY GLASSES  
68124 • 1112775  
270 cc / 84 mm  
9 1/4 oz / 3 1/4"



SET OF 4 WHISKY GLASSES  
68394 • 1112655  
325 cc / 91 mm  
11 oz / 3 1/2"



SET OF 4 HIGHBALL GLASSES  
68134 • 1112774  
450 cc / 170 mm  
15 1/4 oz / 6 3/4"



SET OF 4 HIGHBALL GLASSES  
68033 • 1120032  
285 cc / 151 mm  
9 3/4 oz / 6"

CALDERA

With its lead-free\* crystal glass and playful design, Caldera Collection invites you to a different experience. The alluring swirl of the whisky and highball glasses which is presented with the unique V-form of the Caldera gives a classy and a dynamic impression. The presentation of the collection is now in a new level with the unsurpassed style of Caldera which also enables a dazzling optic effect with the vertical cuts around the glass.



\*NUDE Lead-Free Crystal Glass falls in the category 3 according to the European Directive 69/493/EEC (Crystal Directive) with no intentionally added lead.







reddot award 2017  
winner



**CARAFE**  
28742 • 1116674  
1250 cc / 154 mm / 193 mm  
42 1/4 oz / 6" / 7 1/2"



**TUMBLER**  
22334 • 1116671  
300 cc / 83 mm  
10 1/4 oz / 3 1/4"



**BOWL**  
28743 • 1116678  
170 cc / 56 mm  
5 3/4 oz / 2 1/4"



**BOWL**  
28744 • 1116677  
600 cc / 62 mm  
20 1/4 oz / 2 1/2"

C H I L L

**CHILL**

The Chill collection consists of a decanter with matching tumbler and two bowls. Elegantly smooth, they are made from the finest crystal glass. Glass elements sit on a base of high-quality marble, creating both a sense of weight and authority.





designed by NUDE DESIGN TEAM



CLUB



SET OF 4  
WHISKY  
GLASSES  
**64039 • 1052155**  
250 cc / 86 mm  
8 1/2 oz / 3 1/2"



SET OF 4  
HIGHBALL  
GLASSES  
**64042 • 1052157**  
420 cc / 150 mm  
14 1/4 oz / 6"

### CLUB

The Club range remains clear. Club glasses are dramatically-carved, creating a ripple effect in the bottom of each glass which, when married with the ice, intensifies the visual experience.



designed by NUDE DESIGN TEAM



SET OF 4  
HIGHBALL  
GLASSES  
**64012 • 1052148**  
445 cc / 151 mm  
15 oz / 6"



SET OF 4  
LONG DRINK  
GLASSES  
**64011 • 1052149**  
350 cc / 141 mm  
11 3/4 oz / 5 1/2"



SET OF 4  
WHISKY DOF  
GLASSES  
**64010 • 1052147**  
390 cc / 88 mm  
13 1/4 oz / 3 1/2"



SET OF 4  
WHISKY SOF  
GLASSES  
**64009 • 1052146**  
300 cc / 82 mm  
10 1/4 oz / 3 1/4"



SET OF 4  
SHOT  
GLASSES  
**64008 • 1052145**  
60 cc / 70 mm  
2 oz / 2 1/4"

### FINESSE

The straight lines of the Finesse range are made to appeal to the minimalist. Strict in their simplicity, the glass is also extremely fine, providing a crisp and delicate drinking vessel, enhancing the flavour of any concoction. Finesse in name and nature.



designed by NUDE DESIGN TEAM



SET OF 4  
LONG DRINK  
GLASSES  
**64011 • 1081353**  
350 cc / 141 mm  
11 3/4 oz / 5 1/2"



SET OF 4  
WHISKY DOF  
GLASSES  
**64010 • 1081352**  
390 cc / 88 mm  
13 1/4 oz / 3 1/2"



SET OF 4  
WHISKY SOF  
GLASSES  
**64009 • 1081351**  
300 cc / 82 mm  
10 1/4 oz / 3 1/4"

### FINESSE GRID

Eminently usable for all occasions both formal and relaxed, the Finesse collection mixes the modern and the classic in a casually-sophisticated way. The lines are crisp and carefully defined, the glass intricately etched with a latticed pattern, adding both texture and dimension to the items.



FINESSE GRID



ROCK & POP ARTIST COLLECTION

designed by NIGEL COATES

FINESSE



SET OF 4  
GLASSES  
96865 • 1112772  
390 cc / 88 mm  
13 1/4 oz / 3 1/2"



SET OF 2  
WATER  
GLASSES  
22253 • 1075156  
465 cc / 120 mm  
15 3/4 oz / 4 3/4"



SET OF 2  
WHISKY  
GLASSES  
22302 • 1076892  
470 cc / 90 mm  
16 oz / 3 1/2"

GLASS IS  
TOMORROW

FINESSE



HEADS UP



HEADS UP

ROCK & POP ARTIST COLLECTION

designed by NUDE DESIGN TEAM

MIRAGE



SET OF 4  
HIGHBALL GLASSES  
96866 • 1112777  
480 cc / 154 mm  
16 1/4 oz / 6"



SET OF 4  
HIGHBALL  
GLASSES  
68003 • 1052150  
310 cc / 155 mm  
10 1/2 oz / 6"



SET OF 4  
WHISKY DOF  
GLASSES  
68002 • 1052151  
330 cc / 91 mm  
11 1/4 oz / 3 1/2"

MIRAGE



HEMINGWAY



HEMINGWAY



B R A D A S C A L O N



by  
*Brad  
Ascalon*

H E P B U R N





designed by BRAD ASCALON



HEPBURN



MIXING GLASS WITH METAL STIRRER  
68279 • 1100878  
650 cc / 96.5 mm / 190 mm  
22 oz / 3 3/4" / 7 1/2"



SHAKER WITH METAL TOP  
68060 • 1100896  
500 cc / 88.8 mm - 96 mm  
161 mm - 255 mm  
17 oz / 3 1/2 - 3 3/4"  
6 1/4 - 10"



ALCHEMY GLASS  
22692 • 1116530  
275 cc / 122.5 mm  
9 1/4 oz / 4 3/4"



SET OF 4 LOWBALL GLASSES  
64082 • 1100879  
380 cc / 94 mm  
12 3/4 oz / 3 3/4"



SET OF 4 LONG DRINK GLASSES  
64080 • 1100881  
425 cc / 155 mm  
14 1/4 oz / 6"



SET OF 2 COUPE GLASSES  
67104 • 1100880  
195 cc / 170 mm  
6 1/2 oz / 6 3/4"

### HEPBURN

Elegant, tailored, playful and nuanced, by gently weighting the bottom, Brad Ascalon adds both stability and a sense of authority to each piece. Dressed with sensuous but understated brass-like attachments and accessories, the Hepburn collection is exquisitely stylish, like its namesake.







designed by NUDE DESIGN TEAM

NEW



SET OF 2  
COGNAC  
GLASSES  
32368 • 1208075  
510 cc / 148 mm  
2 7/8 oz / 6"

NEW



SET OF 2  
BEER  
GLASSES  
32363 • 1206318  
380 cc / 65 mm / 206 mm  
13 1/4 oz / 2 1/2" / 6 3/4"



SET OF 2  
WHISKY  
GLASSES  
32342 • 1203962  
205 cc / 108 mm  
7 oz / 4 1/4"



SET OF 2  
WHISKY  
GLASSES  
32165 • 1108088  
205 cc / 206 mm  
7 oz / 8"



SET OF 2  
WHISKY  
GLASSES  
32155 • 1108089  
170 cc / 218 mm  
5 3/4 oz / 8 1/2"

ISLANDS

## ISLANDS

With their slightly flared lip, the whisky glasses direct the spirit's flow to the tip of the tongue, emphasizing their smooth, silken feel in the mouth. Meanwhile, the broad bowl of the glass, tapering toward the top, concentrates the liquid's aroma and flavors, optimizing the sensory experience.





MIKKO LAKKONEN



by  
*Mikko  
Laakkonen*

M A L T







designed by MIKKO LAAKKONEN



**WHISKY BOTTLE**  
**92785 • 1107143**  
 1050 cc / 100 mm / 238 mm  
 35 1/2 oz / 4" / 9 1/4"



**SET OF 2 WHISKY GLASSES**  
**22303 • 1076933**  
 260 cc / 80 mm  
 8 3/4 oz / 3 1/4"



**WHISKY BOTTLE**  
**92632 • 1076908**  
 1100 cc / 115 mm / 185 mm  
 37 1/4 oz / 4 1/2" / 7 1/4"



**SET OF 2 BOWLS**  
**28542 • 1076931**  
 330 cc / 61 mm  
 11 1/4 oz / 2 1/2"

## MALT

The Malt whisky set by Finnish designer Mikko Laakkonen is a stunning group of four. Laakkonen, an award-winning furniture designer, is known for unique and imaginative products, always insisting they are appropriate for everyday use. The Malt whisky set holds fast to his ideals, offering simplicity and beauty, yet complete practicality. In doing so, it also represents the essence of NUDE.



M A L T





**WHISKY BOTTLE**  
92926 • 1107757  
750 cc / 115 \* 155 mm / 183 mm  
25 1/4 oz / 4 1/2 \* 6" / 7 1/4"



**SET OF 2 WHISKY GLASSES**  
22610 • 1107964  
300 cc / 106 mm  
10 1/4 oz / 4 1/4"



**WHISKY BOTTLE**  
92634 • 1116672  
1250 cc / 132 mm / 190 mm  
42 1/4 oz / 5 1/4" / 7 1/2"



**SET OF 2 WHISKY GLASSES**  
22208 • 1116450  
350 cc / 104 mm  
11 3/4 oz / 4"



**SET OF 2 HIGHBALL GLASSES**  
12110 • 1116679  
280 cc / 160 mm  
9 1/2 oz / 6 1/4"



**SET OF 2 LOWBALL GLASSES**  
12009 • 1116683  
230 cc / 130 mm  
7 3/4 oz / 5"

M E M E N T O M O R I

N O . 9

**MEMENTO MORI**



**NO.9**

The name suggests mystery, but the glass is designed for someone who knows their liquor. Perfect for any spirit, these are a must-have for any serious drinker. Heavy-bottomed, feel substantial in the hand, each glass precision-sculpted to create a perfect pyramid inside its base. Dramatic and authoritative, it is modern and sleek. The No.9 decanter is a superb combination of masculine power and female elegance. Or perhaps it's the other way around! Either way, it's a sensational addition to any living room, an item to be cherished for years to come.





**WHISKY BOTTLE**  
92881 • 1116437  
1000 cc / 118 mm / 260 mm  
33 3/4 oz / 4 3/4" / 10 1/4"



**SET OF 2  
WHISKY DOF  
GLASSES**  
22690 • 1116438  
370 cc / 91 mm  
12 1/2 oz / 3 1/2"



**SET OF 2  
WHISKY SOF  
GLASSES**  
22691 • 1116439  
280 cc / 85 mm  
9 1/2 oz / 3 1/4"

P A R I S

## PARIS

Paris is a handmade whisky collection made of crystalline glass, its design inspired by the Eiffel Tower, one of the great symbols of Paris. It offers an extraordinary drinking experience anywhere and anytime. Gently tapering from its heavily-weighted base towards the mouth, the glass captures aromas superbly. This balance between a heavy base and slim body result in a design that offers elegance as well as value, much like the Eiffel Tower itself. The specially-designed surface at the bottom of the glass also allows for beautiful handmade engravings. Paris is simple, elegant, and modern. In short, like NUDE itself.







designed by REMY SAVAGE



SET OF 4  
WATER  
GLASSES

**64172 • 1112787**  
260 cc / 81.5 mm  
8 3/4 oz / 3 1/4"



SET OF 4  
LOWBALL  
GLASSES

**64154 • 1112641**  
295 cc / 77 mm  
10 oz / 3"



SET OF 4  
HIGHBALL  
GLASSES

**64135 • 1112639**  
330 cc / 146 mm  
11 1/4 oz / 5 3/4"



SET OF 2  
PONY  
GLASSES

**67276 • 1112792**  
135 cc / 165 mm  
4 1/2 oz / 6 1/2"



SET OF 2  
COUPETINI  
GLASSES

**67286 • 1112794**  
170 cc / 166 mm  
5 3/4 oz / 6 1/2"



SET OF 2  
COUPE  
GLASSES

**67296 • 1112796**  
220 cc / 174 mm  
7 1/2 oz / 6 3/4"

S  
A  
V  
A  
G  
E

## SAVAGE



The Savage cocktail suite creates a link between the past and the future. It is designed with the perfect shapes and more accurate capacities to highlight both classic drinks and signature cocktails of modern mixologists. Made from lead-free\* crystal, this cocktail glass range combines mixologist and philosopher Remy Savage with his deep understanding of the modern era cocktail crafting combined with NUDE style of simplicity and purity. Together it is intertwining aesthetic, functionality and durability so that each item is perfectly made to enhance the savour of the drink as well as the experience of crafting it.

\*NUDE Lead-Free Crystal Glass falls in the category 3 according to the European Directive 69/493/EEC (Crystal Directive) with no intentionally added lead.

SHADE



**WHISKY BOTTLE**  
**92633 • 1116676**  
 1250 cc / 132 mm / 291 mm  
 42 1/4 oz / 5 1/4" / 11 1/2"



**SET OF 2 WHISKY GLASSES**  
**22299 • 1116451**  
 350 cc / 104 mm  
 11 3/4 oz / 4"



**SET OF 2 HIGHBALL GLASSES**  
**22301 • 1116680**  
 345 cc / 160 mm  
 11 3/4 oz / 6 1/4"



**SET OF 2 LOWBALL GLASSES**  
**22300 • 1116686**  
 290 cc / 130 mm  
 9 3/4 oz / 5"

**SHADE**

Intentionally dramatic and showstopping pieces made of clear crystal glass, the Shade whisky set will appeal to all those with a sense of the Gothic and romantic. The skull-shaped stopper of decanter guarantees to add an air of the theatrical to any table or sideboard. The corresponding trio of shot glasses and tumbler are finished with an embedded image of a skull in their base.



VINTAGE



**SET OF 2 MARTINI GLASSES**  
**66114 • 1052459**  
 290 cc / 185 mm  
 9 3/4 oz / 7 1/4"



**SET OF 2 MARGARITA GLASSES**  
**66120 • 1052458**  
 400 cc / 182 mm  
 13 1/2 oz / 7 1/4"



**SET OF 2 GIN & TONIC GLASSES**  
**66300 • 1080822**  
 585 cc / 180 mm  
 19 3/4 oz / 7"



**SET OF 2 GRAPPA GLASSES**  
**66110 • 1052488**  
 88 cc / 174 mm  
 3 oz / 6 3/4"



**SET OF 2 COGNAC GLASSES**  
**66123 • 1052491**  
 500 cc / 132 mm  
 11 1/4 oz / 4 1/4"



**SET OF 4 WHISKY GLASSES**  
**64160 • 1080748**  
 330 cc / 108.5 mm  
 17 oz / 5 1/4"

**VINTAGE**







SET OF 4  
WHISKY  
GLASSES  
**68174 • 1100883**  
250 cc / 89 mm  
8 1/2 oz / 3 1/2"



SET OF 4  
WHISKY  
GLASSES  
**68184 • 1100891**  
330 cc / 97 mm  
11 1/4 oz / 3 3/4"



SET OF 4  
HIGHBALL  
GLASSES  
**68164 • 1100893**  
250 cc / 135 mm  
8 1/2 oz / 5 1/4"



SET OF 4  
HIGHBALL  
GLASSES  
**68194 • 1100895**  
360 cc / 157 mm  
12 1/4 oz / 6 1/4"

WAYNE

## WAYNE



The Wayne collection consists of drinking glasses designed to underscore the aesthetic purity and radiance of crystalline glass. Each piece features a variety of reflections created by bold vertical scoring, equivalent to crisp pleats in a dress shirt. A horizontal channel at the bottom of each glass deepens the luminosity of each. Meanwhile, it clearly distinguishes the upper and lower elements of the objects and enriches the occasional overlay of cuts and reflections that are visible in different combinations at different angles.



DRINKWARE & SERVEWARE

B E V E R A G E S





designed by NUDE DESIGN TEAM



SET OF 2  
ESPRESSO  
GLASSES

22289 • 1076974

125 cc / 89 mm

4 1/4 oz / 3 1/2"

### ADDICT



A simple yet stylish coffee glass, the Addict is perfectly balanced with a smooth rim and a strong yet easy to grip glass-blown handle. The glass is at once refined yet robust, much like the flavour of the coffee it helps to enhance. Its simple lines, delicately tapering form, widening to rest on a solid base, offers both sophistication and style. It is a discerning glass for similarly discerning coffee drinkers.

designed by ALI BAKOVA



SET OF 2  
LONG DRINK  
GLASSES

BLUE

22256 • 1075342

450 cc / 120 mm

15 1/4 oz / 4 3/4"



SET OF 2  
WATER  
GLASSES

BLUE

22267 • 1075346

330 cc / 80 mm

11 1/4 oz / 3 1/4"



SET OF 2  
LONG DRINK  
GLASSES

CLEAR

22256 • 1076990

450 cc / 120 mm

15 1/4 oz / 4 3/4"



SET OF 2  
WATER  
GLASSES

CLEAR

22267 • 1076991

330 cc / 80 mm

11 1/4 oz / 3 1/4"

### BARDUCK



An original line of glassware created by award-winning Turkish designer Ali Bakova, the range begins with a highball glass for mixed drinks. The shorter version makes a perfect tumbler. Funkier than its brother, it feels solid in the hand, but still offers a radical and imaginative option.



ADDICT

BARDUCK



**CARAFE**  
RED PAINTING  
28782 • 1107088  
1000 cc / 109.5 mm / 280 mm  
33 3/4 oz / 4 1/4" / 11"



**SET OF 2 GLASSES**  
YELLOW & BLUE PAINTING  
92780 • 1107087  
350 cc / 114 mm  
11 3/4 oz / 4 1/2"



**SET OF 2 GLASSES**  
CLEAR  
22374 • 1091930  
350 cc / 114 mm  
11 3/4 oz / 4 1/2"



**SET OF 2 GLASSES**  
SMOKE  
22374 • 1091934  
350 cc / 114 mm  
11 3/4 oz / 4 1/2"



**WATER CARAFE**  
CLEAR  
28782 • 1091937  
1000 cc / 109.5 mm / 280 mm  
33 3/4 oz / 4 1/4" / 11"



**WATER CARAFE**  
SMOKE  
28782 • 1091940  
1000 cc / 109.5 mm / 280 mm  
33 3/4 oz / 4 1/4" / 11"



**CARAFE**  
CLEAR  
28781 • 1091929  
1400 cc / 159 mm / 250 mm  
47 1/4 oz / 6 1/4" / 9 3/4"

BEAK

BEAK

**BEAK**



For Tomas Kral, Iris Apfel is a fashion icon with a very colorful and feminine style. In his Beak project redesigned for the Iris Apfel inspired collection, he wanted to play with these two points: feminine elegance and colorful approach. Realized together with the glassblowers of the NUDE Glass Company, his idea of this project was to explore different skills and techniques of working with glass material such as cutting and color painting. This by using them in a simple, refined and playful way. Using these traditional techniques, he decided to dress his carafes. With a touch of finesse and subtlety, he drew them graphic necklaces and highlighted some parts of their bodies by adding them color. He used the paint as if it were lipstick and he painted in color the edges of his carafes and tumblers.

**BEAK**



A witty trio of items, the Beak collection consists of carafes, one taller than the other, and a matching geometrically designed tumbler. Both carafes are tall necked with a beak-like spout. Perfect for beach houses and urban settings.





designed by NUDE DESIGN TEAM



SET OF 4  
GLASSES  
**AMBER**  
12925 • 1116049  
400 cc / 122 mm  
13 1/2 oz / 4 3/4"



SET OF 4  
GLASSES  
**SMOKE**  
12925 • 1116050  
400 cc / 122 mm  
13 1/2 oz / 4 3/4"



SET OF 4  
GLASSES  
**GREEN TURQUOISE**  
12925 • 1116051  
400 cc / 122 mm  
13 1/2 oz / 4 3/4"



SET OF 4  
GLASSES  
**BURGUNDY**  
12925 • 1116196  
400 cc / 122 mm  
13 1/2 oz / 4 3/4"

**COLORED O**



designed by NUDE DESIGN TEAM



SET OF 4  
GLASSES  
**AMBER**  
22360 • 1107070  
440 cc / 110 mm  
15 oz / 4 1/4"



SET OF 4  
GLASSES  
**CARAMEL**  
22360 • 1107071  
440 cc / 110 mm  
15 oz / 4 1/4"



SET OF 4  
GLASSES  
**PETROLEUM GREEN**  
22360 • 1107072  
440 cc / 110 mm  
15 oz / 4 1/4"

**COLORED U**



A range of funky tumblers in beautiful stained glass. The colours are classy and subtle, and can be used to dramatically enhance any table. Heavy-bottomed with a tapered rim, they feel great in the hand and are adaptable to a multitude of uses.

COLORED O  
COLORED U



designed by NUDE DESIGN TEAM



SET OF 2  
ESPRESSO  
GLASSES  
31975 • 1076977  
95 cc / 93 mm  
3 1/4 oz / 3 3/4"

DELIZIA



designed by NUDE DESIGN TEAM



SET OF 2  
ESPRESSO  
GLASSES  
22298 • 1076816  
55 cc - 100 cc / 121 mm  
1 3/4 oz - 3 1/2 oz / 4 3/4"

DUAL



DELIZIA  
DUAL



designed by NUDE DESIGN TEAM

designed by TOMAS KRAL

HEMINGWAY



JUG  
68010 • 1052152  
1000 cc / 137 mm / 209 mm  
33 3/4 oz / 5 1/2" / 8 1/4"



SET OF 2  
TUMBLERS  
CLEAR  
22505 • 1107264  
290 cc / 95 mm  
9 3/4 oz / 3 3/4"



SET OF 2  
TUMBLERS  
STEEL BLUE  
22505 • 1107266  
290 cc / 95 mm  
9 3/4 oz / 3 3/4"

HEMINGWAY



designed by INGA SEMPÉ

JOUR



WATER  
JUG  
28677 • 1086008  
1350 cc / 115 mm / 243 mm  
45 3/4 oz / 4 1/2" / 9 1/2"



SET OF 2  
GLASSES  
22343 • 1086014  
350 cc / 129 mm  
11 3/4 oz / 5"



SET OF 2  
GLASSES  
22342 • 1086012  
230 cc / 105 mm  
7 3/4 oz / 4 1/4"

JOUR



LADY



WATER  
CARAFE  
CLEAR  
28783 • 1091943  
1000 cc / 113 mm / 247.5 mm  
33 3/4 oz / 4 1/2" / 9 3/4"



WATER  
CARAFE  
OPAL WHITE  
28783 • 1091946  
1000 cc / 113 mm / 247.5 mm  
33 3/4 oz / 4 1/2" / 9 3/4"



WATER  
CARAFE  
STEEL BLUE  
28783 • 1091949  
1000 cc / 113 mm / 247.5 mm  
33 3/4 oz / 4 1/2" / 9 3/4"

LADY

An elegant carafe, the Lady collection is inspired by the elegant collar and pleated folds of a dress worn by a royal queen. The rim of the carafe is delicately ruffled.





ERDEM AKAN



by  
*Erdem  
Akan*

M R . & M R S .







designed by ERDEM AKAN



**NIGHT SET**  
**SMOKED GREEN**  
**92547 • 1050718**  
 850 cc - 250 cc / 110 mm / 200 mm  
 28 3/4 oz - 8 1/2 oz / 4 1/4" / 7 3/4"



**NIGHT SET**  
**DUSTY ROSE**  
**92547 • 1116288**  
 850 cc - 250 cc / 110 mm / 200 mm  
 28 3/4 oz - 8 1/2 oz / 4 1/4" / 7 3/4"



**NIGHT SET**  
**CLEAR**  
**92547 • 1049889**  
 850 cc - 250 cc / 110 mm / 200 mm  
 28 3/4 oz - 8 1/2 oz / 4 1/4" / 7 3/4"



**NIGHT SET**  
**SMOKED GREEN**  
**92546 • 1050709**  
 700 cc - 170 cc / 89 mm / 235 mm  
 23 3/4 oz - 5 3/4 oz / 3 1/2" / 9 1/4"



**NIGHT SET**  
**DUSTY ROSE**  
**92546 • 1116287**  
 700 cc - 170 cc / 89 mm / 235 mm  
 23 3/4 oz - 5 3/4 oz / 3 1/2" / 9 1/4"



**NIGHT SET**  
**CLEAR**  
**92546 • 1049882**  
 700 cc - 170 cc / 89 mm / 235 mm  
 23 3/4 oz - 5 3/4 oz / 3 1/2" / 9 1/4"

MR. & MRS.

**MR. & MRS.**

An amusing pair of matching water jugs with integrated mouth-blown glass cups in clear, green or dusty rose. The cups, decorated with a sleeping and blinking face, also work as a stopper, helping to keep the contents of the jug fresh.





designed by TOMAS KRAL

ELLE  
DECORATION  
INTERNATIONAL  
DESIGNAWARDS



reddot award 2018  
winner

P A R R O T



SET OF 2  
WATER  
GLASSES

CLEAR

22387 • 1116682

240 cc / 100 mm

8 oz / 4"



SET OF 2  
WATER  
GLASSES

SMOKE

22387 • 1116681

240 cc / 100 mm

8 oz / 4"



SET OF 2  
WATER  
GLASSES

STEEL BLUE

22387 • 1116684

240 cc / 100 mm

8 oz / 4"



WATER  
CARAFE

CLEAR

28808 • 1116687

750 cc / 97 mm / 250 mm

25 1/4 oz / 3 3/4" / 9 3/4"



WATER  
CARAFE

SMOKE

28808 • 1116685

750 cc / 97 mm / 250 mm

25 1/4 oz / 3 3/4" / 9 3/4"



WATER  
CARAFE

STEEL BLUE

28808 • 1116688

750 cc / 97 mm / 250 mm

25 1/4 oz / 3 3/4" / 9 3/4"

## PARROT

This playful carafe and tumbler set wear their functionality as their decoration. Cuts made by hand, as well as hand-painting, in the neck indicate where to hold the object and help to increase one's grip when it is heavy with liquid.





STUDIO FORMAFANTASMA



by  
*Studio  
Formafantasma*

P I G M E N T O





designed by STUDIO FORMAFANTASMA



CARAFE  
BEIGE  
28844 • 1098757  
620 cc / 155 mm / 238 mm  
21 oz / 6" / 9 1/4"



CARAFE  
PINK  
28844 • 1098758  
620 cc / 155 mm / 238 mm  
21 oz / 6" / 9 1/4"

P I G M E N T O

## PIGMENTO

Studio FormaFantasma emphasizes the manual genius and honor the traces left by the artisan's hand during the crafting of their tableware. Pigmento reinterprets a traditional hand-making technique used to add hue to glass in the process of mouthblowing an object, an intuitive process that generates a different result every time. Through the milky material, amorphous accents of colourful pigments are blown, smoke-like, emphasizing the serendipity and uniqueness of each piece.





designed by MARKKU SALO



**WATER BOTTLE**  
**CLEAR**  
**28224 • 1050428**  
700 cc / 89 mm / 297 mm  
23 3/4 oz / 3 1/2" / 11 3/4"



**WATER BOTTLE**  
**SMOKED GREEN**  
**28224 • 1050731**  
700 cc / 89 mm / 297 mm  
23 3/4 oz / 3 1/2" / 11 3/4"



**SET OF 2 WATER GLASSES**  
**CLEAR**  
**22201 • 1049680**  
200 cc / 85 mm  
6 3/4 oz / 3 1/4"



**SET OF 2 WATER GLASSES**  
**SMOKED GREEN**  
**22201 • 1050733**  
200 cc / 85 mm  
6 3/4 oz / 3 1/4"

**POEM**

Continuing the theme of synchronicity, NUDE offers stylish matching water bottles and set of glasses in either clear or green. The glass is ribbed, almost like corduroy, creating an extraordinary tactile experience when held in the hand. The narrowing at the top of the glass also helps keep liquid cool. A stunning adornment to any table.



designed by ALI BAKOVA



**WATER CARAFE**  
**CLEAR**  
**28244 • 1050524**  
660 cc / 102 mm / 285 mm  
22 1/4 oz / 4" / 11 1/4"



**SET OF 2 WATER GLASSES**  
**CLEAR**  
**22200 • 1050675**  
250 cc / 105 mm  
8 1/2 oz / 4 1/4"



**WATER CARAFE**  
**SMOKE**  
**91252 • 1049914**  
660 - 250 cc / 102 mm / 300 mm  
22 1/4 - 8 1/2 oz / 4" / 11 3/4"

**RHYTHM**

**RHYTHM**

A smoke water carafe and a clear carafe matched with a set of two glasses. The bottle comes with its own cork stopper, but the glasses can also be used as a lid. Each bottle can be offered to a guest individually, creating an imaginative touch to their dining experience.





DRINKWARE & SERVEWARE

S E R V I N G







NEW

**CARAFE**  
CLEAR + ORANGE  
92991 • 1205430  
1200 cc 308 mm  
42 1/4 oz 12 1/4"



NEW

**TUMBLER**  
CLEAR  
22712 • 1206078  
320 cc 100 mm  
11 1/4 oz 4"



NEW

**SERVICE PLATE**  
ORANGE + OPAL GRAY  
92995 • 1206340  
277 \* 300 mm  
11" \* 11 3/4"



NEW

**MINI SERVICE PLATE**  
ORANGE + OPAL GRAY  
92993 • 1205447  
131 \* 60 mm  
5 1/4" \* 2 1/4"



NEW

**CAKE DOME**  
CLEAR + ORANGE + OPAL GRAY  
92992 • 1205445  
220 \* 282 mm  
8 3/4" \* 11"

**JUNO**



The Juno collection is characterized by a harmonious blend of opal grey, clear and apricot tones that subtly enliven each piece. The color palette has been carefully chosen to add warmth and sophistication to your table setting, making every meal a visually inviting experience. Inspired by the concepts of plurality, unity and transformation, the Juno collection integrates and transforms beautifully, ensuring that each piece can stand alone as a work of art or combine seamlessly with others to create a dynamic ensemble.



JUNO



NEW



**CHOPSTICK REST**  
35534 • 1206395  
15 mm  
2/4"

NEW



**NAPKIN RING**  
38676 • 1206396  
17 mm  
3/4"

NEW



**CANDLE HOLDER - SHORT**  
25663 • 1206401  
140 mm  
5 1/2"

NEW



**CANDLE HOLDER - LONG**  
25662 • 1206390  
180 mm  
7"

**EOS**



Eos, a mesmerizing collection that redefines the elegance of tableware. This exquisite set, comprising two sizes of candle holders, napkin rings, and cutlery rests. Each piece in the Eos collection is handcrafted, showcasing the purity and clarity of crystalline glass. The inspiration behind Eos is the captivating fluidity of hot glass. This fluid essence is ingeniously captured in the design, where each curve and line flows seamlessly, reminiscent of glass in its molten state. The distinct lines etched onto the surfaces of these pieces are not merely decorative but are thoughtfully designed to manipulate light. As light passes through Eos, it bends and refracts, creating a play of light that is as dynamic as it is enchanting. Candle holder and cutlery rest are solid glass while napkin ring is mouth-blown. The candle holders, with their varying sizes, offer a versatile usage, elegantly holding candles and casting a warm, refracted glow that enhances any setting. The napkin ring and chopstick rest complement this dance of light, adding a touch of sophistication to the dining experience.





designed by NUDE DESIGN TEAM



SET OF 2  
SERVING  
PLATES

25369 • 1050857  
90 \* 165 mm / 10 mm  
3 1/2 \* 6 1/2" / 1/2"

AMOUR



designed by ALEJANDRO RUIZ



BUTTER CUP  
38594 • 1050523  
172 mm / 67 mm  
6 3/4" / 2 3/4"



SQUEEZER  
24110 • 1050673  
56 mm / 105 mm  
2 1/4" / 4 1/4"



FUNNEL  
13463 • 1050676  
111 mm / 108 mm  
4 1/4" / 4 1/4"



SPOON REST  
25354 • 1015936  
147 \* 102 mm / 55 mm  
5 3/4 \* 4" / 2 1/4"

CRUET







CAKE STAND WITH DOME  
92910 • 1108758  
330 mm / 282 mm  
13" / 11"



ICE CREAM CUP  
32220 • 1108763  
120 mm / 80 mm  
4 3/4" / 3 1/2"



CANDY BOX  
92912 • 1108767  
115 mm / 93 mm  
6" / 3 3/4"



B L O O M







designed by NUDE DESIGN TEAM



**QUARTET**  
24291 • 1050542  
98 mm / 46 mm  
3 3/4" / 1 3/4"

**QUARTET**

A simple but elegant set of four single clear glass bowls on a slate bed. Perfect for ices or dipping sauces, the Quartet can also be used for condiments such as salts, spices and peppers.



designed by NUDE DESIGN TEAM



**DOME WITH SLATE**  
28106 • 1056479  
200 mm / 360 mm  
7 3/4" / 14 1/4"

**FROMAGE**

A handblown dome of perfectly clear glass, the Fromage makes a stunning table display. Sitting on a circular slate base, the glass is formed like a giant teardrop allowing air to circulate around the contents. A small vent ingeniously blown into the glass also prevents food from 'sweating.' As the domes are all handblown, not one of them is exactly the same.



QUARTET

FROMAGE





designed by NUDE DESIGN TEAM



**CHAMPAGNE COOLER**  
**28233 • 1050341**  
 286 mm / 300 mm  
 11 1/4" / 11 3/4"



**WINE COOLER**  
**16579 • 1050735**  
 210 mm / 220 mm  
 8 1/4" / 8 3/4"



**ICE BOX**  
**28232 • 1050325**  
 133.5 mm / 140 mm  
 5 1/4" / 5 1/4"

**GLACIER**

A trio of glass ice buckets appropriate for every occasion. Purchased separately, the largest of the three is a champagne cooler that can hold a magnum. The second is a white wine cooler. The third and smallest is perfect for solo-bottles, or keeping ice ready for cocktails. Each bucket is decorated with a pair of hand-pressed dimples that not only make each item a one-off, but also makes it easier to hold.



designed by NUDE DESIGN TEAM



**ICE BUCKET**  
**68308 • 1052160**  
 183 \* 143 mm / 154 mm  
 7 1/4" \* 5 3/4" / 6"

**HEMINGWAY**

A neat set comprising of jug, ice bucket, highball glasses, and whisky glasses. Can be purchased together or separately. In homage to the great American writer, the glass is bevelled, rugged in the hand, and possesses a deep and solid bottom. Perfect for long evenings watching the sun go down.



GLACIER  
 HEMINGWAY



designed by ERDEM AKAN



**ICE CREAM CUP**  
24323 • 1116675  
90 \* 90 mm / 60 mm  
3 1/2 \* 3 1/2" / 2 1/4"



**ICE CREAM CUP**  
25368 • 1116673  
77 \* 181 mm / 41 mm  
3 \* 7 1/4" / 1 1/2"

## ICE CUBE

Made to resemble blocks of frozen water, they make perfect serving receptacles for ice cream or amuse-bouches. When not dining, they also work brilliantly as holders for tealights. In fact, their use is only limited by your imagination.



designed by STUDIO FORMAFANTASMA



**SERVICE PLATE**  
PINK  
14058 • 1098760  
218 mm / 22 mm  
8 1/2" / 3/4"



**SERVICE PLATE**  
BEIGE & PINK  
14059 • 1098765  
278 mm / 24 mm  
11" / 1"



**SERVICE PLATE**  
PINK & GREY  
14060 • 1098762  
350 mm / 33 mm  
13 3/4" / 1 1/4"



**CAKE DOME**  
PINK  
91278 • 1098770  
300 mm / 130 mm  
11 3/4" / 5" m



**STORAGE BOX**  
BEIGE  
92716 • 1098809  
160 mm / 50 mm  
6 1/4" / 2"

## PIGMENTO

Studio FormaFantasma emphasizes the manual genius and honor the traces left by the artisan's hand during the crafting of their tableware. Pigmento reinterprets a traditional hand-making technique used to add hue to glass in the process of mouthblowing an object, an intuitive process that generates a different result every time. Through the milky material, amorphous accents of colourful pigments are blown, smoke-like, emphasizing the serendipity and uniqueness of each piece.





designed by ALEJANDRO RUIZ



OIL AND VINEGAR

28226 • 1050303

225 cc / 100 mm / 115 mm

7 1/2 oz / 4" / 4 1/2"



OIL AND VINEGAR

92548 • 1050308

225 cc / 100 mm / 115 mm

7 1/2 oz / 4" / 4 1/2"



SAUCE BOWL

28227 • 1050309

225 cc / 100 mm / 115 mm

7 1/2 oz / 4" / 4 1/2"

## OLEA

A delightful set of pourers that can be purchased together or separately. The Olea range consists of two oil and vinegar pourers—one with a pipette, one with a stopper—and a small sauce jug, the latter designed with a gentle lip at its brim. Despite appearing to rest at an angle, these clear glass containers are perfectly balanced, their design cleverly reflecting their use.



designed by PENTAGON DESIGN



OIL AND VINEGAR

92566 • 1049750

300 cc / 102 mm / 184 mm

10 1/4 oz / 4" / 7 1/4"



WATER CARAFE

92565 • 1049749

1000 cc / 127 mm / 290 mm

33 3/4 oz / 5" / 11 1/2"



CARAFE

92564 • 1049748

1200 cc / 175 mm / 273 mm

40 1/2 oz / 7" / 10 3/4"

## TILT

The Tilt family of carafe, water jug and oil & vinegar bottle is a handsome collection made for the kitchen but sophisticated enough for the table. Their clever design makes them easy pouring devices, while the glass is weighted for maximum stability. Each comes with an ergonomically designed glossy black stopper to keep the contents fresh.



OLEA

TILT





COMPARTMENT TRAY  
CLEAR  
24445 • 1107391  
78 \* 300 mm / 32 mm  
3 \* 11 3/4" / 1 1/4"



COMPARTMENT TRAY  
CLEAR  
24446 • 1107390  
88 \* 308 mm / 44 mm  
2 1/2 \* 12 1/4" / 1 3/4"



COMPARTMENT TRAY  
CLEAR  
24447 • 1107389  
77 \* 296 mm / 34 mm  
3 \* 11 3/4" / 1 1/4"



COMPARTMENT TRAY  
CLEAR  
24448 • 1107388  
77 \* 200 mm / 34 mm  
3 \* 7 3/4" / 1 1/4"



COMPARTMENT TRAY  
CLEAR  
24449 • 1107387  
88 \* 214 mm / 44 mm  
2 1/2 \* 8 1/2" / 1 3/4"



BOWL  
CLEAR  
24461 • 1107323  
196 mm / 45 mm  
7 3/4" / 1 3/4"



BOWL  
CLEAR  
38222 • 1107321  
105 mm / 50 mm  
4 1/4" / 2"



BOWL  
CAMEL  
38222 • 1107322  
105 mm / 50 mm  
4 1/4" / 2"



BOWL  
CLEAR  
38221 • 1107319  
159.5 mm / 60 mm  
6 1/4" / 2 1/4"



BOWL  
CAMEL  
38221 • 1107320  
159.5 mm / 60 mm  
6 1/4" / 2 1/4"



BOWL  
CLEAR  
38223 • 1107324  
220 mm / 85 mm  
8 3/4" / 3 1/4"



BOWL  
CAMEL  
38223 • 1107325  
220 mm / 85 mm  
8 3/4" / 3 1/4"



SILHOUETTE

Simple, sculptural, ornamental: Space Copenhagen's inspiration for their Silhouette bowls and compartment tray was the fluidity and transparency of the material itself. The table setting is a family of three vessels, each in two sizes and two colors (caramel and clear glass), with compatible bases that can be combined in many ways. This was their first foray into working with glass: "Whether fused, cast or blown, the sheer immediacy of the process, the intensity of coaxing molten glass into these exquisite precise forms is quite unique," says Henriksen. With its tapering edges but solid outlines, Silhouette explores its own contrasts and juxtapositions of solid and void, thick and thin, sharp and soft, along with the variations of color tones, layers and surface treatments.



SILHOUETTE



SILHOUETTE

SILHOUETTE









## RON ARAD

Architect and industrial designer Ron Arad was born in Israel but moved to London, where his studio is still located, to study at the AA - Architectural Association from 1974 to 1979. The influence of Dadaism on Arad's early work is visible in his Rover chair, which resembles a ready-made art object and was intended as a critique of the art world. After more than 30 years, Arad's work remains diverse, irreverent and sculptural. Exhibited at world-class institutions like the Centre Pompidou in Paris and New York's Museum of Modern Art, his bold pieces always have a powerful clarity of form and reconsider accepted conventions about shape and function, eschewing embellishment or styling.



## ALEJANDRO RUIZ

He was born on December 18, 1958, in Bahia Blanca which is a coastal town in Argentina, and graduated from Industrial Design Department in 1984. He has taught lessons in Domus Academy which he had the Master's degree in 1986, and in Architecture Faculty of Milan Technical University. In Studio Ruiz which was founded by himself, he worked with various world famous brands. Ruiz has participated in many design and interior architecture focused events and exhibitions in Italy, France, Finland, Germany, Japan, The Netherlands, England and the USA. He has created the brand called Lessdesign with Anna Lombardi in 1994, with the purpose of developing industrial projects. The designer had been working on packaging, interior design, store design, event and exhibition design in Studio Ruiz. He died at the age of 60 in Milan.



## ADRIEN ROVERO

Adrien Rovero's designs often appear to be off-cuts—but endlessly transformable sofa made from elegantly upholstered blocks, for example, or a collection of animal toys made from high quality leather off-cuts—but are inevitably the result of complex considerations. Adrien grew up in the Swiss countryside outside Lausanne, where he started making things from an early age, picking up both man-made and natural objects and turning them into something new. "I've always loved the idea of transformation," he says. In his studio in Renens, he works on furniture, lighting and exhibition designs, and teaches one day a week at the ECAL (L'École Cantonale d'art de Lausanne).



## ALEV EBÜZZIYA

Alev Ebüzziya is an internationally renowned artist, best known for her unique ceramic bowls which are in 30 museum collections around the world, though she has a real passion for glass and textiles too. "I knew by the time I left school that I wasn't going to be a dentist or a lawyer," she says. "Art is very important to me, but I like to work in the design world too, in larger scale production, so my pieces can reach many more people." In the 1960s, Alev headed to Copenhagen, attracted by the clarity and modernity of the Danish design of that period. Her own work also exudes a simplicity and tranquility that makes her a perfect partner for the NUDE brand. For the last 32 years, she has lived in Paris, where her 100 m² south-facing loft in the 14th arrondissement also incorporates her studio. From there, she makes regular trips to her native Istanbul, home of NUDE.



## ALİ BAKOVA

Turkish industrial designer Ali Bakova works from a studio in the large industrial zone of Istanbul's business district, Maslak, where creative offices and auto repair shops—designers and industry—live side by side. In 2015, Bakova, who is also one of the city's most respected design educators, co-curated an exhibition entitled Atölye Maslak Maker Culture during which the small-scale production of artistic and artisanal objects was conducted on-site, using 3D printers. Bakova's work can be playful—he may fashion a cat from Iznik tiles or a wooden chair taking its cues from the iconic Galata Bridge—but it also focuses on purity, what is essential and smart functionality.



## AYŞE BİRSEL + BIBI SECK

Ayşe Birsal and Bibi Seck co-founded New York design studio Birsal + Seck and have been designing award-winning products for more than 20 years for Fortune 500 companies. A Fulbright Scholar with design degrees from Pratt Institute and the Middle East Technical University in Ankara, Turkey. She introduced her user-centered, humanistic creative process, Deconstruction: Reconstruction™ in a 2015 book, Design the Life You Love (Ten Speed Press), as well as workshops and podcasts. Born in Paris and raised between Paris, London and Dakar, Seck earned a Master's degree in industrial design from ESDI Paris and worked as lead designer at Renault for 12 years, guiding large design teams through complex problems and earning two Car of the Year awards. He founded Dakar Next, a design studio-laboratory in Senegal to bring good design practices to West Africa and showcase their economic value.



## AHMET GÜNEŞTEKİN

Ahmet Güneştekin's abstract and conceptual works, spanning a variety of mediums, including painting, sculpture, video, and installation, address the politics of memory, languages of oppression, and forms of resistance through intricate structures and forms. Characterised by the unexpected use of formal and visual elements, his compositions feature layers of meaning to suggest alternative modes of seeing. Early childhood experiences with dengbêjs sonic spheres influenced his understanding of translating and incorporating mythologies into his works. Over a decade of ethnographic research, he has delved into language and oral culture, tracing his childhood images and voices as a memory space. In his first atelier in Beyoğlu, he discovered an artistic language that deviates from the conventional relationship between material and form, borrowing from mythologies. His exhibition Encounter earned him recognition in the Istanbul art scene in 2012, and a year later, he was introduced to international audiences in Venice with his video installations that were acts of counter-memory through forms of artistic recollection.



## BRAD ASCALON

Third generation designer Brad Ascalon established his eponymous, award-winning New York City studio in 2006 after studying industrial design at Pratt University in Brooklyn. Today, the studio specialises in the design of furniture, as well as lighting, packaging, and other consumer products, following an ethos rooted in straightforward design and a balance of form, function and concept.





## DEFNE KOZ

Turkish industrial designer Defne Koz studied at Domus Academy in Milan before joining the studio of Memphis legend Ettore Sottsass. Her work synthesizes her Turkish roots with Italian culture and explores a wide range of product types. It humanizes new technologies, rediscovers artisanry, and highlights material sensuality. With Marco Susani in Chicago, Koz co-founded Koz Susani Design to create hightech devices, high-touch materials and interaction design, luxury crafts, mass-manufactured products and domestic objects. Koz has earned awards from Elle Decor International, Red Dot and the German Design Council while her work has been exhibited around the globe, from Milan's Triennale and MARTa Herford to Galleria Post Design and Ozone Gallery Tokyo.



## ERDEM AKAN

Erdem Akan, born in 1973, has proven to be one of the most energetic proponents of Turkish design. His prolific creations include interiors, products and exhibition designs that offer a synthesis of East and West, traditional and contemporary, reflecting the twin influences of his Istanbul upbringing and a design education in the U.K. Attracted by the purity of Scandinavian design, Akan's imagination also remains at home in Turkey, where 'nothing is straight, not even the streets.' And so he invokes both in his work. Designing for NUDE since its inception, he tends to create products as if for himself, while at the same time aligning them with the brand's philosophy of contemporary simplicity. Neither nostalgic nor futuristic, Akan is instead always creating products for 'the right now.'



## GIORGIO BARGIANI

Assistant Director of Mixology of London's multi-awarded Connaught Bar, Giorgio Bargiani is one of the most influential bartender profiles on the global bar scene, also recipient of the much-coveted International Bartender of the Year accolade at Tales of the Cocktail's Spirited Awards 2023. Giorgio's hospitality legacy is rooted in his family's restaurant and boutique shops heritage in Pisa, Italy. Joining The Connaught Bar in 2014, he's been growing and standing out for his contagious energy and creative drive, within and outside the bar. An ambassador of five-star hospitality, creativity and connections are the pillars of Giorgio's approach to the hospitality world and to the prestigious and disruptive partnerships he builds around the world.



## INGA SEMPÉ

French designer, born in Paris, Inga Sempé graduated from ENSCI-Les Ateliers (L'École Nationale Supérieure de Création Industrielle, Paris) in 1993. From 2000 till 2001 she was scholarship holder at the Villa Medici, Academie de France in Rome and opened her own studio the same year. In the beginning, she first collaborated with the Italian companies. Now Sempé works among others with Scandinavian, Italian and French companies. She lives and works in Paris assisted by two other designers.



## INGRID BERGÉR

For more than 40 years, Ingrid Bergér (designer) has been engaged in design and product development with a focus on glass and porcelain. Having grown up in a glassmaking family from the Bavarian Forest, she graduated from the masterclass at the glass college in Zwiesel before starting to materialise her designs for various internationally renowned glass and porcelain factories. Ingrid Bergér stands for clear design in the Bauhaus style. Her emphasis lies on highlighting the characteristics and strengths of materials.



## JOE DOUCET

After graduating from the prestigious Art Center College of Design in 1999 with a degree in Communication Design, Doucet quickly began exporting his vision beyond graphic design into product, furniture, environment, packaging, technology and many other problems that clients have thrown at him over the years. His portfolio encompasses a variety of industries and clients. Doucet's work has been exhibited in numerous places internationally, including the London Design Museum and the Biennale International Design in Saint-Étienne, while his awards include a 2016 Cooper-Hewitt National Design Award Nomination in Product Design, a 2010 World Technology Award for Design and Good Design Awards in 2012 and 2008. He currently holds more than 50 patents for his designs and inventions.



## MARKKU SALO

The work of the Finnish artist and designer Markku Salo ranges from the ridged tumblers he has designed for NUDE, to largescale site-specific artworks—he recently completed 11 integrated stainless steel sculptures for a new hospital in Tampere—as well as electronics and graphic design. He has lived and worked in the glass village of Nuutajarvi since 1983—a collection of old worker cottages and factory spaces dating back to 1793. These now accommodate a community of artists and makers including blacksmiths and ceramists and a glass hot shop. Designing, says Markku, is team work. Art is a solitary affair, where only the artist can make the decisions. For him, to do both creates an ideal balance.



## MIKKO LAAKKONEN

Mikko studied furniture design at Kymenlaakso University of Applied Sciences, and later received his Masters degree from the University of Art and Design in Helsinki. After working in design and architecture firms for several years, Mikko founded Studio Mikko Laakkonen in 2004. He has been awarded the number of international and national prizes, including: Red Dot Design Award Honorable Mention, (2016), Chicago Athenaeum's Good Design Award (2015 & 2010), Muuz International Awards 2014, Finnish Designer Awards '14: Furniture Designer of the Year, Red Dot: Best of the Best Design Award (2013) Red Dot Design Award (2012), and the Young Designer of the Year prize (2009).



## NIGEL COATES

Nigel Coates is one of the UK's most creative thinkers, architects and educators. He is the designer of everything from groundbreaking restaurant and retail interiors in countries as diverse as Japan and Türkiye, to museum extensions in London, and high-end products for grand European marques, all informed by a sensual and organic quality and a fluidity of line. He has written with unbridled imagination about what cities could be, and fiercely defends the idea that function and aesthetics can happily co-exist. From 1995 to 2011 Nigel Coates also led the Architecture Department at the Royal College of Art in London, and is now establishing a new model for architectural education at the London School of Architecture, based in East London. He divides his time between the UK and Tuscany, where he has restored a 15th century hilltop house in his own unique style. It is this close relationship with Tuscany, and its grand wines, which has directly informed his first collection for NUDE.





## PENTAGON DESIGN

Arni Aromaa and Sauli Suomela established their agency, Pentagon Design, in 1996—even though they were still studying for their MA in Industrial Design at Helsinki’s University of Art and Design at the time. Now they run a studio of 15, including industrial, graphic and interior designers, engineers, and economists. Their projects range from packaging for a Finnish confectionery company to the interior of a new library. Their design education, which followed the Bauhaus ideology, has left them with a preference for restraint and rigour, while coming from Finland means they have always thought of glass as a primary material. “The Finnish glass heritage is so strong,” they say. “In the same way that every interior architect has to design at least one chair in their lifetime, every Finnish designer has to work with glass.”



## REMY SAVAGE

Remy Savage’s bartending career started a little over 10 years ago as he worked in pubs in France to finance his Philosophy studies. He there found a passion in spirits and flavours but above all serving people. He settled in Paris for 5 years at the head of Little Red Door where he tried to playfully question the drinking experience, always implementing philosophical notions in his taught process, from the lighting to the menu design every detail serves a purpose in Remy’s mind. Savage took the ‘big job’ at the Artesian in 2017, worked for 2 years to rebuild the reputation of one of the most notorious bars on the planet using the media of menus to express an individual idea. His creativity and unique way to look at the bar experience got him many accolades, including ‘World’s Most Imaginative Bartender’ in 2014 and ‘Best European Mixologist’ at the Berlin Bar Convent in 2018. Recently Remy joined the team at Le Syndicat in order to open a bar tabac inspired venue in Paris while he carries his London plan to associate art and drinks opening ‘Bar Nouveau,’ an art nouveau inspired cocktail bar.



## SEBASTIAN HERKNER

Born in 1981 in Bad Mergentheim, Germany, Sebastian Herkner earned a degree in product design at the Offenbach University of Art and Design. There, he began to design objects and furniture that synthesize cultures, combine new technologies with traditional craftsmanship, highlight the beauty of his materials and draw renewed attention to the details. Herkner interned at Stella McCartney in London, deepening his knowledge of materials, colors, structures and textures. He opened his award-winning design studio in Offenbach am Main in 2006, and has worked for various brands on interior, exhibition, and museum design projects. Since 2007, Herkner has taught at HfG Offenbach am Main as a visiting lecturer.



## SPACE COPENHAGEN

Danish designers Signe Bindslev Henriksen and Peter Bundgaard Rützou launched Space Copenhagen in 2005 to work across disciplines, creating everything from furniture, lighting and refined objects to art installations, art direction and interior design for homes, hotels and restaurants. The practice intuitively folds together functionality and sensuality, the unadorned and the emotional. Henriksen and Rützou often use natural materials, subdued colors, sharp clarity and meticulously worked craft. There is a slow aesthetic that places material at the fore, trusting its innate qualities and longevity. Space Copenhagen clients include leading manufacturers such as GUBI, Stellar Works, Fredericia Furniture, &Tradition, and Mater. Their interior design—11 Howard in New York, the original Noma in Copenhagen and destination restaurant, Geranium—has also been recognized internationally.



## STUDIO FORMAFANTASMA

Andrea Trimarchi and Simone Farresin are Studio FormaFantasma, an Italian designers duo based in Amsterdam, The Netherlands. Both Andrea Trimarchi and Simone Farresin have become recognized internationally for their provocative experimental materials, investigations and explorations of such issues as the relationship between tradition and local culture, critical approaches to sustainability, the historical, political and social forces that shape human environments and the significance of objects as cultural conduits. Viewing themselves as a bridge between craft and industry, object and user, research and the wider design industry, they have applied rigorous attention to context, process and detail on projects. Works by Studio FormaFantasma have been commissioned by a variety of partners.



## TAMER NAKIŞÇI

Tamer Nakişçi, who currently lives and works between Istanbul and London, describes himself as an interdisciplinary designer, whose ultimate objective is to bring new perspectives to the world of design. His belief is that even a designed object should be open to interpretation, created so each individual user can engage with it in their own way. Tamer studied industrial design at Mimar Sinan University of Fine Arts in Istanbul and was invited during that time to join the prestigious Fiat Advanced Design Concept Lab in Milan. It was there that he learned about the importance of emotion and narrative in design. But it was regular boyhood visits to his father’s carpentry workshop that fired his initial enthusiasm for making. He devised a highly successful interactive installation at London’s Royal Academy, took part in an exhibition curated by Wallpaper magazine at the Salone del Mobile in Milan, participated in conversations around Istanbul Design Biennial, and featured in Dwell magazine as a rising star.



## STUDIO RYGALIK

Studio Rygalik was established in 2006 by Tomek Rygalik. For the first two years it functioned between London and Lodz, Tomek’s hometown. Since 2009, the Studio is based in Warsaw. This is when Gosia Rygalik joined the team to become a partner in 2012. Studio Rygalik develops a wide variety of comprehensive projects. The focus is on furniture, products and spaces. The scope is wide—from design, development and implementation of new products to site-specific installations, design & build and production of limited editions, as well as objects, dining experiences and workshops that explore the relations of design, food and eating. The team remains on the fringe of distinctly commercial activities, while engaging in cultural practices and building its experimental identity.



## TOMAS KRAL

Switzerland-born Tomas Kral established his product design studio in Lausanne in 2008 while still earning the third of his degrees in industrial, product and luxury design at the L’École Cantonale d’art de Lausanne (ECAL). Kral is preoccupied with materials and processes, industrial production and research, so that, out of complex investigations, he produces exquisitely simple pieces, ranging from tabletop objects to lighting, furniture and accessories in glass, cork and ceramic. He has also been a recipient of the Swiss Federal Design Award.



## YOUMEUS DESIGN

London-based Youmeus seeks out ambitious clients and, through design, makes them relevant. The office’s work—the creation of design products and consumer experiences—begins with a fascination for the various ways that people live and the myriad different ways in which humans experience daily life. Through their philosophy and creativity, Youmeus unlock radical and imaginative ideas, glamorous, playful and savvy visuals, and generate new opportunities for brands on the vanguard of their industries.

## ROCK & POP ARTISTS



ERENSU  
EKMEKÇİLER

In 1992, Istanbul-based tattoo artist Ekmekçiler was born into a family of artists. Painting, sculpture, music, even musical instrument making, are a normal part of daily life. While studying glass design at Mimar Sinan University, he worked with artists like Tim Shaw and Wilhelm Vernim. Today, however, he makes his living by inking tattoos. "All branches of art are connected, so I cannot choose just one," he says. "The attractive thing about glass is that it can be broken and does not accept errors—much like skin."



CINS 3000

Cins was born in Ankara, Turkey's capital city, in 1984. He earned his undergraduate degree in Graphic Design from Yeditepe University and his Master's in Visual Communications at Sabancı University in Istanbul. Writing the name Cins, which means 'breed' in Turkish, his diverse, organic-looking artwork has found inspiration in cartoons, surrealism and abstract storylines that evoke emotion, not sentiment. Living and working in Istanbul today, he is influenced by his time on the streets, as well as by the forms and techniques of graphic design.



KIEN

Born in Istanbul in 1986, Kien began writing graffiti and making street art in high school. "When I was introduced to graffiti, there were few people interested in it," he recalls. "That's why the whole city belonged to us." Experience on the streets led him to study Graphic Design at Marmara University and to become an art director in the ad industry. In 2018, Kien launched his own studio, combining street art, design, and advertising.



LUCA  
FONT

Born in Bergamo, in Northern Italy, in 1977, Luca Altini earned a degree in Political Science at the University of Milan and a Master's in Communications at the Catholic University of Milan. He started his professional life in the advertising industry but, during his mid-20s, began to explore the 'underworld aesthetic' of tattoo art. Soon, he moved into inking full time—in a Milan studio and tattoo parlors around the globe—under the name Luca Font.



UMUT  
KARAMAN

After graduating in Graphic Design from Hacettepe University's Fine Arts Department in 1999, Ankara-based illustrator Umut Karaman created visuals for the software industry. Soon, however, under the name Yumidoko, her client list would include fashion industry icons like Vogue, Mavi Jeans, Les Benjamins and Ayşe Kulin. Karaman's work blends classic and pop, sophisticated and simple, calm and joyful in diverse media: children's book illustration, interior decoration and home textile design. She even turns her illustrations into clay sculpture.



*NUDE  
Design Team*

NUDE Design Team fearlessly investigates innovative ideas. We are constantly inquisitive and work hard to develop dynamic collaborations with artists and designers. NUDE contemporary collections are designed to fit seamlessly with modern life, perfect for special occasions and everyday use and always enchant the eye.





## INDEX (by COLLECTION NAME)

SERIES NAME	PAGE NUMBER
Beret .....	24
Bubble .....	29
Concentrics .....	31
Dame Jeanne .....	33
Ecrin .....	37
Kurage .....	39
Inca .....	41
Midnight .....	50
Mist Lights .....	56
Mono Box .....	57
Mars .....	58
Nest .....	62
Opti .....	60
Sweets .....	63
Eden .....	68
Blossom .....	69
Moon .....	69
Altruist .....	70
Egoist .....	71
Fumo .....	73
Ilo .....	74
Paroles Paroles .....	81
Pebbles .....	82
Roots .....	83
Blow .....	87
Mira .....	87
Mono .....	89
Orion .....	92
Tree .....	92
Smooth .....	93
Balance .....	110
Cantina .....	111
Climats .....	112
Decanting .....	115
Fantasy .....	116
Jazz .....	119
Neo .....	124
O2 .....	125
Oxygen .....	125
Pure .....	127
Red or White .....	128
Refine .....	129
Round Up .....	130
Vini .....	132
Wine Party .....	137
Alba .....	148
Arch .....	149
Big Top .....	152
Caldera .....	154
Camp .....	153
Chill .....	157
Club .....	158
Finesse Grid .....	159
Hepburn .....	165
Islands .....	167

## INDEX (by COLLECTION NAME)

SERIES NAME	PAGE NUMBER
Malt .....	171
No.9 .....	173
Paris .....	175
Savage .....	177
Shade .....	70
Wayne .....	181
Addict .....	184
Barduck .....	184
Colored O .....	189
Colored U .....	189
Delizia .....	190
Dual .....	190
Lady .....	193
Mr. & Mrs. ....	197
Parrot .....	199
Poem .....	204
Rhythm .....	205
Amour .....	212
Cruet .....	212
Bloom .....	214
Fromage .....	217
Quartet .....	217
Glacier .....	219
Ice Cube .....	220
Olea .....	222
Tilt .....	222
Ghost Zero .....	96-97
Stem Zero .....	104
Jour .....	121/192
Mini Magnolia .....	47/50
Vintage .....	134-135/179
Mirage .....	123/160
Finesse .....	159-160
Hemingway .....	161/192/219
Beak .....	186-187
Pigmento .....	203/221
Silhouette .....	224-225
Blade .....	27-28
Contour .....	32/113
Heads Up .....	38/117/161
Layers .....	44-46
Magnolia .....	48-49
Mist .....	54-56
Ace .....	70/149
Joy .....	75-76
Memento Mori .....	10-15/172
Molten .....	20
Fish Memory .....	66
Troya .....	66
Eos .....	210
Juno .....	208
Gravity .....	144
Bar/Giani .....	142



INDEX

Mould No	SKU	Koleksiyon	V(cc)	V(UKoz)	V(USoz)	d(mm)	h(mm)	d(inch)	h(inch)	Page No
28460	1075628	Memento Mori				198 * 260	210	7 3/4 * 10 1/4	8 1/4	10
28460	1075631	Memento Mori				198 * 260	210	7 3/4 * 10 1/4	8 1/4	10
28460	1076783	Memento Mori				198 * 260	210	7 3/4 * 10 1/4	8 1/4	10
28460	1108532	Memento Mori				198 * 260	210	7 3/4 * 10 1/4	8 1/4	10
25640	1108534	Memento Mori				117 * 153	125	4 2/4 * 6	5	11
28460	1086327	Memento Mori				198 * 260	210	7 3/4 * 10 1/4	8 1/4	11
28460	1076926	Memento Mori				198 * 260	210	7 3/4 * 10 1/4	8 1/4	11
28460	1076927	Memento Mori				198 * 260	210	7 3/4 * 10 1/4	8 1/4	11
25397	1108932	Memento Mori				80 * 105	83	3 1/4 * 4 1/4	3 1/4	13
25397	1108933	Memento Mori				80 * 105	83	3 1/4 * 4 1/4	3 1/4	13
25397	1108935	Memento Mori				80 * 105	83	3 1/4 * 4 1/4	3 1/4	13
25397	1108937	Memento Mori				80 * 105	83	3 1/4 * 4 1/4	3 1/4	13
25397	1108931	Memento Mori				80 * 105	83	3 1/4 * 4 1/4	3 1/4	13
25397	1108934	Memento Mori				80 * 105	83	3 1/4 * 4 1/4	3 1/4	13
25397	1108936	Memento Mori				80 * 105	83	3 1/4 * 4 1/4	3 1/4	13
25397	1086330	Memento Mori				80 * 105	83	3 1/4 * 4 1/4	3 1/4	13
25397	1075634	Memento Mori				80 * 105	83	3 1/4 * 4 1/4	3 1/4	13
25397	1075637	Memento Mori				80 * 105	83	3 1/4 * 4 1/4	3 1/4	13
25397	1086350	Memento Mori				80 * 105	83	3 1/4 * 4 1/4	3 1/4	13
25397	1086333	Memento Mori				80 * 105	83	3 1/4 * 4 1/4	3 1/4	13
25397	1086336	Memento Mori				80 * 105	83	3 1/4 * 4 1/4	3 1/4	13
28416	1076779	Memento Mori				240 * 249	150	9 2/4 * 9 3/4	6	14
28416	1075713	Memento Mori				240 * 249	150	9 2/4 * 9 3/4	6	14
28416	1076780	Memento Mori				240 * 249	150	9 2/4 * 9 3/4	6	14
28690	1086658	Memento Mori				130 * 134	81	5 * 5 1/4	3 1/4	14
28690	1086660	Memento Mori				130 * 134	81	5 * 5 1/4	3 1/4	14
28690	1086659	Memento Mori				130 * 134	81	5 * 5 1/4	3 1/4	14
25435	1107069	Memento Mori				80 * 105	75	3 1/4 * 4 1/4	3	15
22610	1107964	Memento Mori	300	10 2/4	10 1/4	96.5	106	3 3/4	4 1/4	15
92926	1107757	Memento Mori	750	26 2/4	25 1/4	155	183	6	7 1/4	15
38678	1207072	Molten				210	600	8 1/4	23 2/4	20
38678	1207075	Molten				210	600	8 1/4	23 2/4	20
38677	1206869	Molten				127	270		10 3/4	21
38677	1206926	Molten				127	270		10 3/4	21
28936	1101357	Beret				130	107	5	4 1/4	24
28936	1101359	Beret				130	107	5	4 1/4	25
28937	1101361	Beret				214	65	8 1/2	2 2/4	25
28937	1101363	Beret				214	65	8 1/2	2 2/4	25
28938	1101365	Beret				160	154	6 1/4	6	25
28938	1101367	Beret				160	154	6 1/4	6	25
38004	1101941	Blade				315 * 118	300	12 2/4 * 4 3/4	11 3/4	27
38004	1101943	Blade				315 * 118	300	12 2/4 * 4 3/4	11 3/4	27
38004	1101945	Blade				315 * 118	300	12 2/4 * 4 3/4	11 3/4	27
28920	1098966	Blade				395 * 130	200	15 2/4 * 5	7 3/4	28
28920	1101952	Blade				395 * 130	200	15 2/4 * 5	7 3/4	28
28920	1101954	Blade				395 * 130	200	15 2/4 * 5	7 3/4	28
38005	1101946	Blade				206 * 118	400	8 * 4 2/4	15 3/4	28
38005	1101948	Blade				206 * 118	400	8 * 4 2/4	15 3/4	28
38005	1101950	Blade				206 * 118	400	8 * 4 2/4	15 3/4	28
28287	1055649	Bubble				400 * 365	360	15 3/4 * 14 1/4	14 1/4	29
28289	1055646	Bubble				350 * 300	315	13 3/4 * 11 3/4	12 2/4	29
8152	1108340	Concentric				358	266	14	10 2/4	31

INDEX

Mould No	SKU	Koleksiyon	V(cc)	V(UKoz)	V(USoz)	d(mm)	h(mm)	d(inch)	h(inch)	Page No
8150	1108336	Concentric				168	388	6 1/2	15 1/4	31
8151	1108338	Concentric				258	342	10 1/4	13 2/4	31
8153	1108342	Concentric				462	175	18 1/4	7	31
28387	1091741	Contour				180	400	7	15 3/4	32
28435	1091756	Contour				240	135	9 1/2	5 1/4	32
28435	1204979	Contour				180	400	7	15 3/4	32
28453	1204978	Contour				90	200	2	7 3/4	32
28390	1204975	Contour				240	135	9 1/2	5 1/4	32
17754	1050838	Dame Jeanne	9000	316 3/4	304 1/4	260	340	10 1/4	13 2/4	33
17756	1050840	Dame Jeanne	19000	668 3/4	642 2/4	325	485	12 3/4	19	33
92760	1105400	Ecrin				94	125	3 3/4	5	37
92760	1105403	Ecrin				94	125	3 3/4	5	37
92761	1105401	Ecrin				146	182	5 3/4	7 1/4	37
92761	1105404	Ecrin				146	182	5 3/4	7 1/4	37
92762	1105402	Ecrin				166	118	6 1/2	4 3/4	37
92762	1105405	Ecrin				166	118	6 1/2	4 3/4	37
28533	1076890	Heads Up				162	75	6 1/2	3	38
28535	1076882	Heads Up				269	125	10 1/2	5	38
28536	1076884	Heads Up				300	100	11 3/4	4	38
28541	1076886	Heads Up				220	74	8 3/4	3	38
31983	1076888	Heads Up				322	230	12 3/4	9	38
28035	1050810	Kurage	2400	84 2/4	81 1/4	270	110	10 3/4	4 1/4	39
28035	1050812	Kurage	2400	84 2/4	81 1/4	270	110	10 3/4	4 1/4	39
23454	1050816	Inca				180	200	7	7 3/4	41
28304	1050814	Inca				180	350	7	13 3/4	41
28810	1095745	Layers				138 * 68	325.5	5 2/4 * 2 3/4	12 3/4	44
28810	1095746	Layers				138 * 68	325.5	5 2/4 * 2 3/4	12 3/4	44
28810	1095747	Layers				138 * 68	325.5	5 2/4 * 2 3/4	12 3/4	44
28812	1095753	Layers				395 * 230	227.5	15 2/4 * 9	9	45
28812	1095754	Layers				395 * 230	227.5	15 2/4 * 9	9	45
28812	1095755	Layers				395 * 230	227.5	15 2/4 * 9	9	45
28811	1095749	Layers				261 * 125	276	10 1/4 * 5	10 3/4	46
28811	1095750	Layers				261 * 125	276	10 1/4 * 5	10 3/4	46
28811	1095751	Layers				261 * 125	276	10 1/4 * 5	10 3/4	46
28551	1076791	Mini Magnolia				112.5	200	4 1/2	7 3/4	47
28551	1076795	Mini Magnolia				112.5	200	4 1/2	7 3/4	47
28552	1076803	Mini Magnolia				80	150	3 1/4	6	47
28552	1076807	Mini Magnolia				80	150	3 1/4	6	47
28553	1076812	Mini Magnolia				114	95	4 1/2	3 3/4	47
28553	1076814	Mini Magnolia				114	95	4 1/2	3 3/4	47
28554	1076830	Mini Magnolia				56	103	2 1/4	4	47
28554	1076832	Mini Magnolia				56	103	2 1/4	4	47
20791	1116373	Magnolia				240	200	9 1/2	7 3/4	48
20791	1116376	Magnolia				240	200	9 1/2	7 3/4	48
20791	1116377	Magnolia				240	200	9 1/2	7 3/4	48
20787	1116378	Magnolia				180	320	7	12 2/4	49
20787	1116374	Magnolia				180	320	7	12 2/4	49
20787	1116375	Magnolia				180	320	7	12 2/4	49
28298	1116381	Magnolia				88	280	3 1/2	11	49
28298	1116379	Magnolia				88	280	3 1/2	11	49
28298	1116380	Magnolia				88	280	3 1/2	11	49
28552	1112687	Mini Magnolia				80	150	3 1/4	6	50

## INDEX

Mould No	SKU	Koleksiyon	V(cc)	V(UKoz)	V(USoz)	d (mm)	h (mm)	d (inch)	h (inch)	Page No
28552	1112688	Mini Magnolia				80	150	3 1/4	6	50
28552	1112686	Mini Magnolia				80	150	3 1/4	6	50
28394	1055534	Midnight	4300	151 1/4	145 2/4	310	74	12 1/4	3	50
28392	1055575	Midnight				218.5	80	8 1/2	3 1/4	50
28394	1055535	Midnight	4300	151 1/4	145 2/4	310	74	12 1/4	3	50
15556	1075319	Mist				205 * 110	290	8 * 4 1/4	11 2/4	54
15556	1116250	Mist				205 * 110	290	8 * 4 1/4	11 2/4	54
15557	1075320	Mist				280 * 140	380	11 * 5 2/4	15	54
15557	1116252	Mist				280 * 140	380	11 * 5 2/4	15	54
15558	1075321	Mist				270 * 100	210	10 3/4 * 4	8 1/4	54
15558	1116254	Mist				270 * 100	210	10 3/4 * 4	8 1/4	54
15556	1101315	Mist				205 * 110	290	8 * 4 1/4	11 2/4	55
15556	1101313	Mist				205 * 110	290	8 * 4 1/4	11 2/4	55
15557	1101322	Mist				280 * 140	380	11 * 5 2/4	15	55
15557	1101317	Mist				280 * 140	380	11 * 5 2/4	15	55
15558	1101326	Mist				270 * 100	210	10 3/4 * 4	8 1/4	55
15558	1101324	Mist				270 * 100	210	10 3/4 * 4	8 1/4	55
38441	1116577	Mist				93 * 100	141	3 3/4 * 4	5 1/2	56
38441	1107884	Mist				93 * 100	141	3 3/4 * 4	5 1/2	56
38591	1116576	Mist				75 * 70	107	2 3/4 * 3	4 1/4	56
38591	1116575	Mist				75 * 70	107	2 3/4 * 3	4 1/4	56
28350	1055588	Mono Box				250	228	9 3/4	9	57
28350	1055595	Mono Box				250	228	9 3/4	9	57
28351	1055590	Mono Box				215	197	8 1/2	7 3/4	57
28351	1055598	Mono Box				215	197	8 1/2	7 3/4	57
28352	1055591	Mono Box				185	163	7 1/4	6 2/4	57
28353	1055593	Mono Box				155	133	6	5 1/4	57
28353	1055594	Mono Box				155	133	6	5 1/4	57
28353	1055604	Mono Box				155	133	6	5 1/4	57
38340	1204432	Mars				140	134	11 3/4	5 1/4	58
38340	1204431	Mars				140	134	11 3/4	5 1/4	58
38341	1204430	Mars				200	190	7 7/8	7 2/4	58
38341	1204429	Mars				200	190	7 7/8	7 2/4	58
38342	1204434	Mars				85	77	3 1/3	3	58
38342	1204433	Mars				85	77	3 1/3	3	58
38230	1107351	Opti				197 * 182	138	7 3/4 * 7 1/4	5 2/4	60
38230	1107352	Opti				197 * 182	138	7 3/4 * 7 1/4	5 2/4	60
38231	1107353	Opti				200 * 178	242.5	7 3/4 * 7	9 2/4	60
38231	1107354	Opti				200 * 178	242.5	7 3/4 * 7	9 2/4	60
38232	1107355	Opti				305	98	12	3 3/4	60
38232	1107356	Opti				305	98	12	3 3/4	60
92356	1027133	Nest	600	21	20 1/4	150	150	6	6	62
92356	1050703	Nest	600	21	20 1/4	150	150	6	6	62
92356	1101347	Nest	600	21	20 1/4	150	150	6	6	62
92426	1050695	Nest	200	7	6 3/4	90	90	3 1/2	3 2/4	62
92426	1050696	Nest	200	7	6 3/4	90	90	3 1/2	3 2/4	62
92426	1101353	Nest	200	7	6 3/4	90	90	3 1/2	3 2/4	62
28367	1076992	Sweets				125	200	5	7 3/4	63
28369	1076989	Sweets				320 * 170	270	12 2/4 * 6 3/4	10 3/4	63
92983	1203922	Fish Memory				138		5 2/4		66
32358	1205739	Troya	750	26 1/2			225	8 1/4		66
15479	1050536	Eden				226	340	9	13 2/4	68

## INDEX

Mould No	SKU	Koleksiyon	V(cc)	V(UKoz)	V(USoz)	d (mm)	h (mm)	d (inch)	h (inch)	Page No
15531	1055234	Eden				128.5	200	5	7 3/4	68
92606	1075367	Eden				93	135	3 3/4	5 1/4	68
92606	1075368	Eden				93	135	3 3/4	5 1/4	68
92606	1075369	Eden				93	135	3 3/4	5 1/4	68
28225	1050509	Moon				200	295.5	7 3/4	11 3/4	69
28223	1050426	Blossom				130	210	5	8 1/4	69
28223	1050507	Blossom				130	210	5	8 1/4	69
24356	1050746	Altruist				150	35	6	1 2/4	70
25651	1107918	Ace				161	42	6 1/4	1 3/4	70
25652	1107920	Ace				120 * 200	42	4 3/4 * 7 3/4	1 3/4	70
24421	1091092	Shade				160	65	6 1/4	2 2/4	70
24357	1049316	Egoist				130 * 180	40	5 * 7	1 2/4	71
24357	1050742	Egoist				130 * 180	40	5 * 7	1 2/4	71
13505	1116044	Fumo				100	55	4	2 1/4	73
24278	1086216	Fumo				117 * 164	25	4 2/4 * 6 2/4	1	73
24997	1116617	Fumo				160	43	6 1/4	1 3/4	73
25401	1076954	Fumo				147 * 101	55	5 3/4 * 4	2 1/4	73
24356	1049318	Altruist				150	35	6	1 2/4	74
38601	1199469	Ilo				180	282	7	11	74
38602	1199452	Ilo				140	212	11 3/4	8 1/4	74
38603	1199453	Ilo				100	63.5	4	2 2/4	74
28414	1055897	Joy				81	64	3 1/4	2 2/4	75
28414	1055900	Joy				81	64	3 1/4	2 2/4	75
28414	1075481	Joy				81	64	3 1/4	2 2/4	75
28415	1055904	Joy				100	80	4	3 1/4	75
28415	1055907	Joy				100	80	4	3 1/4	75
28415	1075483	Joy				100	80	4	3 1/4	76
28414	1055899	Joy				81	64	3 1/4	2 2/4	76
28414	1055898	Joy				81	64	3 1/4	2 2/4	76
28415	1055906	Joy				100	80	4	3 1/4	76
28415	1055909	Joy				100	80	4	3 1/4	76
28415	1055905	Joy				100	80	4	3 1/4	76
25510	1108206	Paroles Paroles				164 * 64	40	6 2/4 * 2 2/4	1 2/4	81
25512	1108208	Paroles Paroles				164 * 64	40	6 2/4 * 2 2/4	1 2/4	81
25514	1108210	Paroles Paroles				164 * 64	40	6 2/4 * 2 2/4	1 2/4	81
25516	1108212	Paroles Paroles				164 * 64	40	6 2/4 * 2 2/4	1 2/4	81
25518	1108214	Paroles Paroles				164 * 64	40	6 2/4 * 2 2/4	1 2/4	81
25532	1116620	Paroles Paroles				164 * 64	40	6 2/4 * 2 2/4	1 2/4	81
25533	1116621	Paroles Paroles				164 * 64	40	6 2/4 * 2 2/4	1 2/4	81
28408	1075193	Pebbles				97 * 116	45	3 3/4 * 4 2/4	1 3/4	82
28408	1075196	Pebbles				97 * 116	45	3 3/4 * 4 2/4	1 3/4	82
28408	1075202	Pebbles				97 * 116	45	3 3/4 * 4 2/4	1 3/4	82
28408	1075206	Pebbles				97 * 116	45	3 3/4 * 4 2/4	1 3/4	82
28409	1075211	Pebbles				84,5 * 84	45	3 1/4 * 3 1/4	1 3/4	82
28409	1075215	Pebbles				84,5 * 84	45	3 1/4 * 3 1/4	1 3/4	82
28409	1075219	Pebbles				84,5 * 84	45	3 1/4 * 3 1/4	1 3/4	82
28409	1075241	Pebbles				84,5 * 84	45	3 1/4 * 3 1/4	1 3/4	82
28410	1075246	Pebbles				71,5 * 77,5	45	2 3/4 * 3	1 3/4	82
28410	1075250	Pebbles				71,5 * 77,5	45	2 3/4 * 3	1 3/4	82
28410	1075254	Pebbles				71,5 * 77,5	45	2 3/4 * 3	1 3/4	82
28410	1075258	Pebbles				71,5 * 77,5	45	2 3/4 * 3	1 3/4	82
92492	1050836	Roots	1050	37	35 2/4	180	215	7	8 2/4	83



INDEX

Mould No	SKU	Koleksiyon	V(cc)	V(UKoz)	V(USoz)	d (mm)	h (mm)	d (inch)	h (inch)	Page No
92492	1050837	Roots	1050	37	35 2/4	180	215	7	8 2/4	83
15477	1050515	Mira				328	265	13	10 2/4	87
15477	1082424	Mira				328	265	13	10 2/4	87
15477	1076922	Mira				328	265	13	10 2/4	87
15477	1082425	Mira				328	265	13	10 2/4	87
15477	1076923	Mira				328	265	13	10 2/4	87
15477	1082426	Mira				328	265	13	10 2/4	87
92600	1076963	Blow				280	202+200	11	8 + 7 3/4	87
92600	1082436	Blow				280	202+200	11	8 + 7 3/4	87
92600	1076964	Blow				280	202+200	11	8 + 7 3/4	87
92600	1082437	Blow				280	202+200	11	8 + 7 3/4	87
92600	1076965	Blow				280	202+200	11	8 + 7 3/4	87
92600	1082438	Blow				280	202+200	11	8 + 7 3/4	87
15476	1050513	Mono				310	334	12 1/4	13 1/4	89
15476	1082427	Mono				310	334	12 1/4	13 1/4	89
15476	1076919	Mono				310	334	12 1/4	13 1/4	89
15476	1082429	Mono				310	334	12 1/4	13 1/4	89
15476	1076918	Mono				310	334	12 1/4	13 1/4	89
15476	1082428	Mono				310	334	12 1/4	13 1/4	89
15566	1076820	Mono				387	254	15 1/4	10	89
15566	1082430	Mono				387	254	15 1/4	10	89
15567	1076824	Mono				196	405	7 3/4	16	89
15567	1082431	Mono				196	405	7 3/4	16	89
15586	1086024	Mono				220	226	8 3/4	9	89
15586	1095988	Mono				220	226	8 3/4	9	89
15459	1049716	Tree				228	263	9	10 1/4	92
15459	1082420	Tree				228	263	9	10 1/4	92
15459	1050511	Tree				228	263	9	10 1/4	92
15459	1082421	Tree				228	263	9	10 1/4	92
15478	1050517	Orion				320	320	12 1/2	12 2/4	92
15478	1082423	Orion				320	320	12 1/2	12 2/4	92
15478	1064373	Orion				320	320	12 1/2	12 2/4	92
15478	1082422	Orion				320	320	12 1/2	12 2/4	92
15570	1076913	Smooth				205	240	8	9 2/4	93
15570	1082432	Smooth				205	240	8	9 2/4	93
22609	1204048	Ghost Zero Belly	470	16 2/4	16	62	115	2 1/2	4 2/4	96
32253	1204043	Ghost Zero Belly	720	25 1/4	24 1/4	64	216	2 1/2	8 2/4	96
32261	1204045	Ghost Zero Belly	400	14	13 2/4	61	201	2 1/2	8	96
22608	1204030	Ghost Zero Tulip	480	17	16 1/4	65	114	2 1/2	4 2/4	97
32252	1204046	Ghost Zero Tulip	410	14 2/4	13 3/4	61	208	2 1/2	8 1/4	97
32258	1204047	Ghost Zero Tulip	500	17 2/4	17	65	223	2 1/2	8 3/4	97
32260	1204044	Ghost Zero Tulip	233	8 1/4	7 3/4	42	228	1 3/4	9	97
32306	1116553	Stem Zero Grace	800	28 1/4	27	68	270	2 3/4	10 1/3	100
32306	1116554	Stem Zero Grace	800	28 1/4	27	68	270	2 3/4	10 1/3	100
32307	1116609	Stem Zero Grace	630	22 1/4	21 1/4	63	250	2 1/2	9 3/4	100
32307	1116610	Stem Zero Grace	630	22 1/4	21 1/4	63	250	2 1/2	9 3/4	100
32308	1116614	Stem Zero Grace	445	15 3/4	15	53	269	2	10 1/2	100
32308	1116615	Stem Zero Grace	445	15 3/4	15	53	269	2	10 1/2	100
22602	1107882	Stem Zero Volcano	550	19 1/4	18 2/4	63	114	2 1/2	4 2/4	101
32019	1101740	Stem Zero	1000	35 1/4	33 3/4	76	249	3	9 3/4	101
32019	1101729	Stem Zero	1000	35 1/4	33 3/4	76	249	3	9 3/4	101
32020	1101741	Stem Zero	700	24 3/4	23 3/4	68	236	2 3/4	9 1/4	101

INDEX

Mould No	SKU	Koleksiyon	V(cc)	V(UKoz)	V(USoz)	d (mm)	h (mm)	d (inch)	h (inch)	Page No
32020	1101730	Stem Zero	700	24 3/4	23 3/4	68	236	2 3/4	9 1/4	101
32021	1101742	Stem Zero	300	10 2/4	10 1/4	46	260	2 3/4	10 1/4	101
32021	1101731	Stem Zero	300	10 2/4	10 1/4	46	260	2 3/4	10 1/4	101
32248	1107721	Stem Zero Trio	420	14 3/4	14 1/4	61	227	2 1/2	9	103
32248	1116035	Stem Zero Trio	420	14 3/4	14 1/4	61	227	2 1/2	9	103
32249	1107723	Stem Zero Trio	510	18	17 1/4	64	237.5	2 1/2	9 1/4	103
32249	1116036	Stem Zero Trio	510	18	17 1/4	64	237.5	2 1/2	9 1/4	103
32250	1107725	Stem Zero Trio	285	10	9 3/4	49	235	2	9 1/4	103
32250	1116037	Stem Zero Trio	285	10	9 3/4	49	235	2	9 1/4	103
32160	1107268	Stem Zero	420	14 3/4	14 1/4	63	220	2 1/2	8 3/4	103
32160	1107269	Stem Zero	420	14 3/4	14 1/4	63	220	2 1/2	8 3/4	103
22365	1101736	Stem Zero	450	15 3/4	15 1/4	90.5	115	3 1/2	4 2/4	104
32016	1101737	Stem Zero	950	33 2/4	32 1/4	74	237	3	9 1/4	104
32016	1101726	Stem Zero	950	33 2/4	32 1/4	74	237	3	9 1/4	104
32017	1101738	Stem Zero	650	22 3/4	22	66	225	2 1/2	8 3/4	104
32017	1101727	Stem Zero	650	22 3/4	22	66	225	2 1/2	8 3/4	104
32018	1101739	Stem Zero	300	10 2/4	10 1/4	46	257	1 3/4	10	104
32018	1101728	Stem Zero	300	10 2/4	10 1/4	46	257	1 3/4	10	104
32024	1101743	Stem Zero	550	19 1/4	18 2/4	68	237	2 1/2	9 2/4	104
32024	1101732	Stem Zero	550	19 1/4	18 2/4	68	237	2 1/2	9 2/4	104
32027	1101744	Stem Zero	750	26 2/4	25 1/4	98	199	3 3/4	7 3/4	104
32027	1101733	Stem Zero	750	26 2/4	25 1/4	98	199	3 3/4	7 3/4	104
32029	1101745	Stem Zero	450	15 3/4	15 1/4	59	229.5	2 1/4	9	104
32029	1101734	Stem Zero	450	15 3/4	15 1/4	59	229.5	2 1/4	9	104
32030	1101746	Stem Zero	450	15 3/4	15 1/4	49	242	2	9 2/4	104
32030	1101735	Stem Zero	450	15 3/4	15 1/4	49	242	2	9 2/4	104
32338	1204051	Dream Parade	182	6 2/4			280		11	108
12783	1057839	Balance	325	12 1/4	11 3/4	89	115	3 1/2	4 2/4	110
28206	1050501	Balance	1000	35 1/4	33 3/4	217	245	8 1/2	9 3/4	110
28206	1075163	Balance	1000	35 1/4	33 3/4	217	245	8 1/2	9 3/4	110
28196	1050526	Cantina	4000	140 3/4	135 1/4	202	350	8	13 3/4	111
66072	1080174	Climats	390	13 3/4	13 1/4	83	215	3 1/4	8 2/4	112
66074	1080173	Climats	640	22 2/4	21 3/4	95.5	245	3 3/4	9 3/4	112
66076	1081357	Climats	500	17 2/4	17	64	230	2 1/2	9	112
28437	1075300	Contour	460	16 1/4	15 2/4	130	103	5	4	113
28453	1076521	Contour				90	200	2	7 3/4	113
28454	1076523	Contour				90	128	3 1/2	5	113
22266	1076519	Contour	360	12 1/4	12 3/4	90	128	3 1/2	5	113
28436	1076517	Contour	2300	77 3/4	81	60	250	2 1/4	9 3/4	113
28216	1049628	DecanteRing	750	26 2/4	25 1/4	265	250	10 1/2	9 3/4	115
66103	1081355	Fantasy	870	30 2/4	29 2/4	78	175	3	7	116
66160	1081361	Fantasy	290	10 1/4	9 3/4	50	270	2	10 3/4	116
66199	1080745	Fantasy	770	27	26	70	270	2 3/4	10 3/4	116
31962	1075158	Heads Up	480	17	16 1/4	89	215	3 1/2	8 2/4	117
31963	1075160	Heads Up	740	26	25	112	230	4 1/2	9	117
31964	1075162	Heads Up	240	8 2/4	8	76	250	3	9 3/4	117
38607	1204181	Jazz	2300	81	77 3/4	188	353	7 1/2	13 2/4	119
38607	1201891	Jazz	2300	81	77 3/4	188	343	7 1/2	13 2/4	119
31993	1086016	Jour	150	5 1/4	5	63	128	2 1/2	5	121
31994	1086018	Jour	180	6 1/4	6	65	134	2 1/2	5 1/4	121
92670	1086044	Jour	850	30	28 3/4	113	266	4 1/2	10 2/4	121
64001	1052139	Mirage	385	13 2/4	13	91.5	82	3 1/2	3 1/4	123

INDEX

Mould No	SKU	Koleksiyon	V(cc)	V(UKoz)	V(USoz)	d (mm)	h (mm)	d (inch)	h (inch)	Page No
64002	1052140	Mirage	330	11 2/4	11 1/4	65	140	2 1/2	5 2/4	123
64003	1052141	Mirage	480	17	16 1/4	73	154	2 3/4	6	123
66091	1052464	Mirage	245	8 2/4	8 1/4	59	238	2 1/4	9 1/4	123
66092	1052465	Mirage	425	15	14 1/4	96	198	3 3/4	7 3/4	123
66093	1052466	Mirage	570	20	19 1/4	105	207	4 1/4	8 1/4	123
66078	1202714	Mirage	790	26 3/4			217	8 1/2		123
22286	1076995	Neo	530	18 3/4	18	85	120	3 1/4	4 3/4	124
22287	1076996	Neo	380	13 2/4	12 3/4	85	90	3 1/4	3 2/4	124
22288	1076997	Neo	260	9 1/4	8 3/4	85	60	3 1/4	2 1/4	124
31971	1076993	Neo	175	6 1/4	6	70	212	2 3/4	8 1/4	124
31972	1076994	Neo	320	11 1/4	10 3/4	85	180	3 1/4	7	124
16025	1208538	Oxygen	1750	61 2/4	59 1/4	226	270	9	10 3/4	125
28656	1091394	O2	3200	112 3/4	108 1/4	196	300	7 3/4	11 3/4	125
28725	1091089	O2	1750	61 2/4	59 1/4	156	240	6 1/4	9 2/4	125
64025	1052144	Pure	610	21 2/4	20 3/4	94	120	3 3/4	4 3/4	127
64026	1052143	Pure	710	25	24	108.5	114	4 1/4	4 2/4	127
64089	1052468	Pure	250	8 3/4	8 2/4	72	92	2 3/4	3 2/4	127
64090	1052467	Pure	390	13 3/4	13 1/4	81	105	3 1/4	4 1/4	127
28288	1049939	Red or White	1300	45 3/4	44	97	335	3 3/4	13 1/4	128
28297	1050736	Red or White	2100	74	71	127	333	5	13	128
31877	1049612	Red or White	450	15 3/4	15 1/4	85	232	3 1/4	9 1/4	128
31878	1049619	Red or White	450	15 3/4	15 1/4	75	156	3	6 1/4	128
67091	1080828	Refine	440	15 2/4	15	87.5	214	3 1/2	8 2/4	129
67092	1080824	Refine	610	21 2/4	20 3/4	96	235	3 3/4	9 1/4	129
67094	1080832	Refine	200	7	6 3/4	57	225	2 1/4	8 3/4	129
67316	1112659	Refine	530	18 3/4	18	68	223.5	2 3/4	8 3/4	129
22436	1206690	Round Up	580	20 2/4	3 2/4		106		4 1/4	130
22433	1207018	Round Up	430	15 1/4	14 2/4		147		5 3/4	130
22434	1207015	Round Up	410	14 2/4	13 3/4		90		3 2/4	130
32007	1116698	Round Up	200	7	6 3/4	42	253	1 3/4	10	132
32010	1116699	Round Up	400	14	13 2/4	104	154	4	6	132
32011	1116700	Round Up	350	12 1/4	11 3/4	53	214	2	8 2/4	132
32012	1116701	Round Up	500	17 2/4	17	63	227	2 1/2	9	132
32007	1204820	Round Up	200	7	6 3/4	42	253	1 3/4	10	132
32010	1204819	Round Up	400	14	13 2/4	104	154	4	6	132
32011	1204834	Round Up	350	12 1/4	11 3/4	53	214	2	8 2/4	132
32012	1204818	Round Up	500	17 2/4	17	63	227	2 1/2	9	132
38451	1116025	Vini	1750	61 2/4	59 1/4	171	266	6 3/4	10 2/4	132
38452	1116026	Vini	1200	42 1/4	40 2/4	191	308	7 1/2	12 1/4	132
28303	1208736	Vintage	750	26 2/4	25 1/4	150	242	6	9 2/4	134
29005	1086979	Vintage	750	26 2/4	25 1/4	147	230	5 3/4	9	134
66113	1052489	Vintage	320	11 1/4	10 3/4	57	220	2 1/4	8 3/4	135
66125	1052487	Vintage	600	21	20 1/4	70	240	2 3/4	9 2/4	135
66112	1052490	Vintage	220	7 3/4	7 2/4	50	242	2	9 2/4	135
66122	1052483	Vintage	430	15 1/4	14 2/4	83.5	217	3 1/4	8 2/4	135
67044	1205777	Vintage	185	6 1/4	6 1/4	42	160	2 1/4	6 1/4	135
31900	1050681	Wine Party	550	19 1/4	18 2/4	90	250	3 1/2	9 3/4	137
31901	1050683	Wine Party	350	12 1/4	11 3/4	79.5	235	3 1/4	9 1/4	137
31902	1050685	Wine Party	250	8 3/4	8 2/4	64	265	2 1/2	10 2/4	137
67244	1207946	Bar/Giani	375	13 3/4	12 3/4		149		5 3/4	142
67214	1207967	Bar/Giani	190	6 3/4	6 1/2		177		7	142
67224	1207943	Bar/Giani	320	10 3/4	10 3/4		107		11 1/4	142

INDEX

Mould No	SKU	Koleksiyon	V(cc)	V(UKoz)	V(USoz)	d (mm)	h (mm)	d (inch)	h (inch)	Page No
67234	1207944	Bar/Giani	330	11 2/4	11 1/4		171		6 3/4	142
32383	1208510	Bar/Giani	530	2 3/4	18		223.5		8 3/4	142
22056	1206387	Gravity	204	7	7 1/4		100		4	144
22055	1206386	Gravity	315	10 3/4	11		160		6 1/4	144
22054	1206391	Gravity	313	10 1/2	11		136		5 1/4	144
22057	1206389	Gravity	278	9 1/2	9 3/4		127		5	144
22340	1082999	Alba	260	9 1/4	9 1/4	82	87	3 1/4	3 2/4	148
22341	1086001	Alba	390	13 3/4	13 3/4	82	120	3 1/4	4 3/4	148
28675	1086003	Alba	1800	63 1/4	63 1/4	160	200	6 1/4	7 3/4	148
28676	1116630	Alba	1500	52 3/4	52 3/4	110	300	4 1/4	11 3/4	148
22153	1049891	Arch	300	10 2/4	10 1/2	82	90	3 1/4	3 2/4	149
28266	1049744	Arch	470	16 2/4	16 1/2	120	80	4 3/4	3 1/4	149
92572	1049901	Arch	1000	35 1/4	35 1/4	130	195	5	7 3/4	149
22606	1107914	Ace	350	12 1/4	12 1/4	90	94	3 1/2	3 3/4	149
22607	1107916	Ace	460	16 1/4	16 1/4	78.5	154	3	6	149
38692	1208074	Big Top					55	2 1/4		152
64122	1100884	Big Top	270	9 2/4	9 1/2	81	80	3 1/4	3 1/4	152
64132	1100887	Big Top	300	10 2/4	10 1/2	62	145	2 1/2	5 3/4	152
64142	1100885	Big Top	320	11 2/4	11 1/4	84	88	3 1/4	3 2/4	152
64152	1100888	Big Top	340	12	12	62	161	2 1/2	6 1/4	152
64162	1100886	Big Top	430	15 1/4	15 1/4	66	175	2 1/2	7	152
67306	1112790	Big Top	235	8 1/4	8 1/4	112	151.5	4 1/2	6	152
22330	1082997	Camp	350	12 1/4	12 1/4	85	100	3 1/4	4	153
22331	1082996	Camp	470	16 2/4	16 1/2	85	125	3 1/4	5	153
92661	1082995	Camp	1500	52 3/4	52 3/4	200*90	245	7 3/4*3 2/4	9 3/4	153
68033	1120032	Caldera	285	10	10	68.5	151	2 3/4	6	154
68124	1112775	Caldera	270	9 2/4	9 1/2	82	84	3 1/4	3 1/4	154
68134	1112774	Caldera	450	15 3/4	15 3/4	78	170	3	6 3/4	154
68394	1112655	Caldera	325	11 2/4	11 1/2	89	91	3 1/2	3 2/4	154
22334	1116671	Chill	300	10 2/4	10 1/2	90	83	3 1/2	3 1/4	157
28742	1116674	Chill	1250	44	44	154	193	6	7 2/4	157
28743	1116678	Chill	170	6	6	90	56	3 1/2	2 1/4	157
28744	1116677	Chill	600	21	21	153	62	6	2 2/4	157
64039	1052155	Club	250	8 3/4	8 3/4	79	86	3	3 2/4	158
64042	1052157	Club	420	14 3/4	14 3/4	70.5	150	2 3/4	6	158
64009	1081351	Finesse Grid	300	10 2/4	10 1/2	75	82	3	3 1/4	159
64010	1081352	Finesse Grid	390	13 3/4	13 3/4	82	88	3 1/4	3 2/4	159
64011	1081353	Finesse Grid	350	12 1/4	12 1/4	62	141	2 1/2	5 2/4	159
64008	1052145	Finesse	60	2	2	39	70	1 1/2	2 3/4	159
64009	1052146	Finesse	300	10 2/4	10 1/2	75	82	3	3 1/4	159
64010	1052147	Finesse	390	13 3/4	13 3/4	82	88	3 1/4	3 2/4	159
64011	1052149	Finesse	350	12 1/4	12 1/4	62	141	2 1/2	5 2/4	159
64012	1052148	Finesse	445	15 3/4	15 3/4	66	151	2 1/2	6	159
96866	1112777	Mirage	480	17	16 1/4	58.5	154	2 1/4	6	160
96865	1112772	Finesse	390	13 3/4	13 1/4	82	88	3 1/4	3 2/4	160
68002	1052151	Hemingway	330	11 2/4	11 1/2	97	91	3 3/4	3 2/4	161
68003	1052150	Hemingway	310	11	11	75	155	3	6	161
22253	1075156	Heads Up	465	16 1/4	16 1/4	90	120	3 1/2	4 3/4	161
22302	1076892	Heads Up	470	16 2/4	16 1/2	101	90	4	3 2/4	161
22692	1116530	Hepburn	275	9 3/4	9 3/4	92	122.5	3 1/2	4 3/4	165
64080	1100881	Hepburn	425	15	15	75.5	155	3	6	165
64082	1100879	Hepburn	380	13 1/4	13 1/4	92	94	3 1/2	3 3/4	165



INDEX

Mould No	SKU	Koleksiyon	V(cc)	V(UKoz)	V(USoz)	d (mm)	h (mm)	d (inch)	h (inch)	Page No
67104	1100880	Hepburn	195	6 3/4	6 3/4	101.5	170	4	6 3/4	165
68060	1100896	Hepburn	500	17 2/4	17 1/2	88,8-96	161-255	3 1/2-3 3/4	6 1/4-10	165
68279	1100878	Hepburn	650	23	23	96.5	190	3 3/4	7 2/4	165
32368	1208075	Islands	510	17 1/4	18	148			6	167
32363	1206318	Islands	380	12 3/4	13 1/4	206			6 3/4	167
32342	1203962	Islands	205	7	7 1/4	108			4 1/4	167
32155	1108089	Islands	170	6	6	43	218	1 3/4	8 2/4	167
32165	1108088	Islands	205	7 1/4	7 1/4	49	206	2	8	167
22303	1076933	Malt	260	9 1/4	9 1/4	80	80	3 1/4	3 1/4	171
28542	1076931	Malt	330	11 2/4	11 1/2	100	61	4	2 2/4	171
92632	1076908	Malt	1100	38 3/4	38 3/4	115	170-20	4 1/2	6 3/4 * 3/4	171
92785	1107143	Malt	1050	37	37	100	248	4	9 3/4	171
92634	1116672	No.9	1250	44	44	132	190	5 1/4	7 2/4	173
12009	1116683	No.9	290	10 1/4	10 1/4	70	130	2 3/4	5	173
12110	1116679	No.9	325	11 2/4	11 1/2	65	160	2 1/2	6 1/4	173
22208	1116450	No.9	350	12 1/4	12 1/4	92	104	3 1/2	4	173
22690	1116438	Paris	370	13	13	77	91	3	3 1/2	175
22691	1116439	Paris	280	9 3/4	9 3/4	72	85	2 3/4	3 1/4	175
92881	1116437	Paris	1000	35 1/4	35 1/4	118	260	4 3/4	10 1/4	175
64135	1112639	Savage	330	11 2/4	11 1/2	68	146	2 3/4	5 3/4	177
64154	1112641	Savage	295	10 2/4	10 1/2	86	77	3 1/2	3	177
64172	1112787	Savage	260	9 1/4	9 1/4	82	81.5	3 1/4	3 1/4	177
67276	1112792	Savage	135	4 3/4	4 3/4	74	165	3	6 2/4	177
67286	1112794	Savage	170	6	6	99.5	166	4	6 2/4	177
67296	1112796	Savage	220	7 3/4	7 3/4	110	174	4 1/4	6 3/4	177
22299	1116451	Shade	350	12 1/4	12 1/4	92	104	3 1/2	4	178
22300	1116686	Shade	290	10 1/4	10 1/4	70	130	2 3/4	5	178
22301	1116680	Shade	325	11 2/4	11 1/2	65	160	2 1/2	6 1/4	178
92633	1116676	Shade	1250	44	44	132	291	5 1/4	11 2/4	178
64160	1080748	Vintage	330	11 2/4	11 1/2	81.5	108.5	3 1/4	4 1/4	179
66110	1052488	Vintage	88	3	3	66	174	2 1/2	6 3/4	179
66114	1052459	Vintage	290	10 1/4	10 1/4	122	185	4 3/4	7 1/4	179
66120	1052458	Vintage	400	14	14	125	182	5	7 1/4	179
66123	1052491	Vintage	500	17 2/4	17 1/2	68	132	2 3/4	5 1/4	179
66300	1080822	Vintage	585	20 2/4	20 1/2	106	180	4 1/4	7	179
68164	1100893	Wayne	250	8 3/4	8 3/4	67	135	2 3/4	5 1/4	181
68174	1100883	Wayne	250	8 3/4	8 3/4	79	89	3	3 2/4	181
68184	1100891	Wayne	330	11 2/4	11 1/2	87	97	3 1/2	3 3/4	181
68194	1100895	Wayne	360	12 3/4	12 3/4	71.5	157	2 3/4	6 1/4	181
22256	1076990	Barduck	450	15 3/4	15 3/4	87	120	3 1/2	4 3/4	184
22256	1075342	Barduck	450	15 3/4	15 3/4	87	120	3 1/2	4 3/4	184
22267	1076991	Barduck	330	11 2/4	11 1/2	86	80	3 1/2	3 1/4	184
22267	1075346	Barduck	330	11 2/4	11 1/2	86	80	3 1/2	3 1/4	184
22289	1076974	Addict	125	4 2/4	4 1/2	74.5	89	2 1/2	3 2/4	184
28782	1107088	Beak Iris Inspiration	1000	35 1/4	35 1/4	109.5	280	4 1/4	11	186
92780	1107087	Beak Iris Inspiration	350	12 1/4	12 1/4	85	114	3 1/4	4 2/4	186
22374	1091930	Beak	350	12 1/4	12 1/4	85	114	3 1/4	4 2/4	187
22374	1091934	Beak	350	12 1/4	12 1/4	85	114	3 1/4	4 2/4	187
28781	1091929	Beak	1400	49 2/4	49 1/4	159	250	6 1/4	9 3/4	187
28782	1091937	Beak	1000	35 1/4	35 1/4	109.5	280	4 1/4	11	187
28782	1091940	Beak	1000	35 1/4	35 1/4	109.5	280	4 1/4	11	187
22360	1107070	Colored U	440	15 2/4	15 1/2	86	110	3 1/2	4 1/4	189

INDEX

Mould No	SKU	Koleksiyon	V(cc)	V(UKoz)	V(USoz)	d (mm)	h (mm)	d (inch)	h (inch)	Page No
22360	1107071	Colored U	440	15 2/4	15 1/2	86	110	3 1/2	4 1/4	189
22360	1107072	Colored U	440	15 2/4	15 1/2	86	110	3 1/2	4 1/4	189
12925	1116049	Colored O	400	14	14	74	122	3	4 3/4	189
12925	1116050	Colored O	400	14	14	74	122	3	4 3/4	189
12925	1116051	Colored O	400	14	14	74	122	3	4 3/4	189
12925	1116196	Colored O	400	14	14	74	122	3	4 3/4	189
22298	1076816	Dual	55-100	2-3 1/2		55	121	2 1/4	4 3/4	190
31975	1076977	Delizia	95	3 1/4	3 1/4	55	93	2 1/4	3 3/4	190
22342	1086012	Jour	230	8	8	67	105	2 3/4	4 1/4	192
22343	1086014	Jour	350	12 1/4	12 1/4	68	129	2 3/4	5	192
28677	1086008	Jour	1350	45 3/4	47 1/2	115	243	4 1/2	9 2/4	192
68010	1052152	Hemingway	1000	35 1/4	35 1/4	137	209	5 1/2	8 1/4	192
22505	1107264	Lady	290	10 1/4	10 1/4	83	95	3 1/4	3 3/4	193
22505	1107266	Lady	290	10 1/4	10 1/4	83	95	3 1/4	3 3/4	193
28783	1091943	Lady	1000	35 1/4	35 1/4	113	247.5	4 1/2	9 3/4	193
28783	1091946	Lady	1000	35 1/4	35 1/4	113	247.5	4 1/2	9 3/4	193
28783	1091949	Lady	1000	35 1/4	35 1/4	113	247.5	4 1/2	9 3/4	193
92546	1050709	Mr. & Mrs.	700-170	24 3/4-6		89	235	3 1/2	9 1/4	197
92546	1049882	Mr. & Mrs.	700-170	24 3/4-6		89	235	3 1/2	9 1/4	197
92546	1116287	Mr. & Mrs.	700-170	24 3/4-6		89	235	3 1/2	9 1/4	197
92547	1050718	Mr. & Mrs.	850-250	30-8 3/4		110	200	4 1/4	7 3/4	197
92547	1049889	Mr. & Mrs.	850-250	30-8 3/4		110	200	4 1/4	7 3/4	197
92547	1116288	Mr. & Mrs.	850-250	30-8 3/4		110	200	4 1/4	7 3/4	197
22387	1116682	Parrot	240	8 2/4	8 1/2	70	100	2 3/4	4	199
22387	1116681	Parrot	240	8 2/4	8 1/2	70	100	2 3/4	4	199
22387	1116684	Parrot	240	8 2/4	8 1/2	70	100	2 3/4	4	199
28808	1116687	Parrot	750	26 2/4	26 1/2	97	250	3 3/4	9 3/4	199
28808	1116685	Parrot	750	26 2/4	26 1/2	97	250	3 3/4	9 3/4	199
28808	1116688	Parrot	750	26 2/4	26 1/2	97	250	3 3/4	9 3/4	199
28844	1098757	Pigmento	620	21 3/4	21 3/4	155	238	6	9 1/4	203
28844	1098758	Pigmento	620	21 3/4	21 3/4	155	238	6	9 1/4	203
22201	1049680	Poem	200	7	7	80	85	3 1/4	3 1/4	204
22201	1050733	Poem	200	7	7	80	85	3 1/4	3 1/4	204
28224	1050428	Poem	700	24 3/4	24 3/4	89	297	3 1/2	11 3/4	204
28224	1050731	Poem	700	24 3/4	24 3/4	89	297	3 1/2	11 3/4	204
22200	1050675	Rhythm	250	8 3/4	8 3/4	90	105	3 1/2	4 1/4	205
28244	1050524	Rhythm	660	23 1/4	23 1/4	102	285	4	11 1/4	205
91252	1049914	Rhythm	660-250	23 1/4-8 3/4		102	300	4	11 3/4	205
92991	1205430	Juno	1200	42 1/4	40 1/2		308			208
22712	1206078	Juno	320	11 1/4	10 3/4		100			208
92995	1206340	Juno				300	277	11	11 3/4	208
92993	1205447	Juno				131	60	5 1/4	2 1/4	208
92992	1205445	Juno				282	220	8 3/4	11	208
35534	1206395	Eos				15			2/4	210
38676	1206396	Eos				17			3/4	210
25663	1206401	Eos				140			5 1/2	210
25662	1206390	Eos				180			7	210
13463	1050676	Cruet				111	108	4 1/4	4 1/4	212
24110	1050673	Cruet				56	105	2 1/4	4 1/4	212
25354	1015936	Cruet				147 * 102	55	5 3/4 * 4	2 1/4	212
38594	1050523	Cruet				172	67	6 3/4	2 3/4	212
25369	1050857	Amour				165 * 90	10	6 2/4 * 3 2/4	2/4	212

## INDEX

Mould No	SKU	Koleksiyon	V (cc)	V (UKoz)	V (USoz)	d (mm)	h (mm)	d (inch)	h (inch)	Page No
32220	1108763	Bloom				120	80	4 3/4	3 2/4	214
92910	1108758	Bloom				330	282	13	11	214
92912	1108767	Bloom				155	93	6	3 3/4	214
24291	1050542	Quartet				98	46	3 3/4	1 3/4	217
28106	1056479	Fromage				200	360	7 3/4	14 1/4	217
68308	1052160	Hemingway	1650	58	58	183 * 143	154	7 1/4 * 5 3/4	6	219
16579	1050735	Glacier	3750	132	132	210	220	8 1/4	8 3/4	219
28232	1050325	Glacier	1100	38 3/4	38 3/4	133.5	140	5 1/4	5 2/4	219
28233	1050341	Glacier	9650	339 3/4		286	300	11 1/4	11 3/4	219
24323	1116675	Ice Cube				90	60	3 1/2	2 1/4	220
25368	1116673	Ice Cube				181 * 77	41	7 1/4 * 3	1 2/4	220
14058	1098760	Pigmento				218	22	8 1/2	3/4	221
14059	1098765	Pigmento				278	24	11	1	221
14060	1098762	Pigmento				350	33	13 3/4	1 1/4	221
91278	1098770	Pigmento				300	130	11 3/4	5	221
92716	1098809	Pigmento	660	23 1/4	23 1/4	160	50	6 1/4	2	221
92564	1049748	Tilt	1200	42 1/4	42 1/4	175	273	7	10 3/4	222
92565	1049749	Tilt	1000	35 1/4	35 1/4	127	290	5	11 2/4	222
92566	1049750	Tilt	300	10 2/4	10 1/2	102	184	4	7 1/4	222
28227	1050309	Olea	225	8	8	100	115	4	4 2/4	222
92548	1050308	Olea	225	8	8	100	115	4	4 2/4	222
28226	1050303	Olea	225	8	8	100	115	4	4 2/4	222
24445	1107391	Silhouette				300 * 78	32	11 3/4 * 3	1 1/4	224
24446	1107390	Silhouette				308 * 88	44	12 1/4 * 3 2/4	1 3/4	224
24447	1107389	Silhouette				296 * 77	34	11 3/4 * 3	1 1/4	224
24448	1107388	Silhouette				200 * 77	34	7 3/4 * 3	1 1/4	224
24449	1107387	Silhouette				214 * 88	44	8 2/4 * 3 2/4	1 3/4	224
24461	1107323	Silhouette				196	45	7 3/4	1 3/4	224
38221	1107319	Silhouette				159.5	60	6 1/4	2 1/4	225
38221	1107320	Silhouette				159.5	60	6 1/4	2 1/4	225
38222	1107321	Silhouette				105	50	4 1/4	2	225
38222	1107322	Silhouette				105	50	4 1/4	2	225
38223	1107324	Silhouette				220	85	8 3/4	3 1/4	225
38223	1107325	Silhouette				220	85	8 3/4	3 1/4	225
92926	1107757	Memento Mori	750	26 2/4	25 1/4	155	183	6	7 1/4	172
22610	1107964	Memento Mori	300	10 2/4	10 1/4	96.5	106	3 3/4	4 1/4	172



