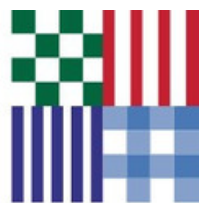




# Trade Product Catalogue 2019

TIBARD

Uniform in our Expertise



# WHO WE ARE



**STAFF UNIFORMS AND  
WORKWEAR**

# TIBARD LIMITED



When people think of uniform and workwear, they tend to go straight to products.

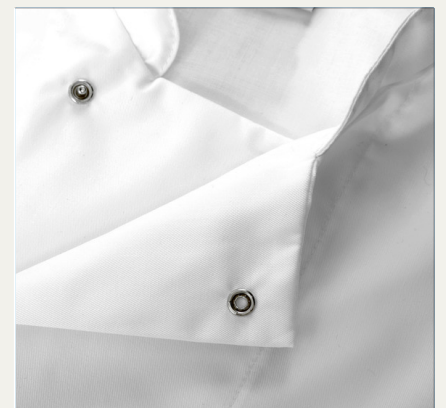
What brands? What features? What styles?

These are fundamental questions you have to consider when purchasing your uniform.

Products should not overwhelm you with choice, but show you what is available in terms of styles, fabrics, colours, customisation and features.

With over our 40 years in business we have learnt what works with what in each individual site, sector or size.

So please browse our product catalogue and see that we'll have something just right for you



#uniform in our expertise

# CHEF JACKETS

CICJRS019301



**RING STUD**  
Short and Long sleeve

Fabric: 65% polyester/35% cotton  
Weight:190 gsm  
Sizes: S/M/L/XL/2XL  
Featuring exposed ring stud,  
panelled back and pen pocket

CICJ019303



**BLACK P/C**  
Short and Long sleeve

Fabric: 65% polyester/35% cotton  
Weight:190 gsm  
Sizes: S/M/L/XL/2XL  
Featuring concealed press stud,  
and panelled back

CICJ019301



**WHITE P/C**  
Short and Long sleeve

Fabric: 65% polyester/35% cotton  
Weight:190 gsm  
Sizes: S/M/L/XL/2XL  
Featuring concealed press stud,  
and panelled back

CJM019303



**COOLMESH**  
Short and Long sleeve

Fabric: 65% polyester/35% cotton  
Weight:190 gsm  
Sizes: S/M/L/XL/2XL  
Featuring concealed ring stud,  
'coolmax' panelled back



CJM019301



**COOLMESH**  
Short and Long sleeve

Fabric: 65% polyester/35% cotton  
Weight:190 gsm  
Sizes: S/M/L/XL/2XL  
Featuring concealed ring stud  
'coolmax' panelled back



**BESPOKE**

Let us Produce your own  
colour/design jacket with  
amendments.

Fabric: Choose from our range  
Weight:Choose from our range  
Sizes: S/M/L/XL/2XL/3XL/4XL

Features: Add your own choice of  
detail.

## MORE THAN A JACKET

# EXECUTIVE JACKETS

OHOXFORD



**COOLTEX**

Fabric: 50% polyester/50% cotton  
Weight: 215 gsm Cooltex  
Sizes: S/M/L/XL/2XL  
Detachable buttons, underarm vent, pen pocket



OHOXFORD



**COOLTEX S/S**

Fabric: 50% polyester/50% cotton  
Weight: 215 gsm Cooltex  
Sizes: S/M/L/XL/2XL  
Detachable buttons, underarm vent, pen pocket



OHSUFFOLK



**WHITE P/C**

Fabric: 65% polyester/35% cotton  
Weight: 190 gsm  
Sizes: S/M/L/XL/2XL  
Concealed stud front, Double pen pocket, Back darts for better shape

OHYORK



**LADIES S/S**

Fabric: 65% polyester/35% cotton  
Weight: 190 gsm  
Sizes: S/M/L/XL/2XL  
Concealed stud front, Curved and split front seams for better fit

OHYORK



**LADIES**

Fabric: 65% polyester/35% cotton  
Weight: 190 gsm  
Sizes: S/M/L/XL/2XL  
Concealed stud front, Curved and split front seams for better fit

OHSUFFOLK



**WHITE P/C**

Fabric: 65% polyester/35% cotton  
Weight: 190 gsm  
Sizes: S/M/L/XL/2XL  
Concealed stud front, Double pen pocket, Back darts for better shape

## MORE THAN A JACKET

# CHEF TROUSERS

CT019603



**BLACK**

CT019626



**BLUE GINGHAM**

CT019628



**BLACK GINGHAM**

Fabric: 65% polyester/35% cotton  
Weight: 190 gsm  
Sizes: S/M/L/XL/2XL  
Full Elasticated waist trouser with rear patch pocket. Finished at 31"

Fabric: 65% polyester/35% cotton  
Weight: 190 gsm  
Sizes: S/M/L/XL/2XL  
Full Elasticated waist trouser with rear patch pocket. Finished at 31"

Fabric: 65% polyester/35% cotton  
Weight: 190 gsm  
Sizes: S/M/L/XL/2XL  
Full Elasticated waist trouser with rear patch pocket. Finished at 31"

CT308203



**BLACK**

CT308226



**BLUE GINGHAM**

CT308228



**BLACK GINGHAM**

Fabric: 65% polyester/35% cotton  
Weight: 190 gsm  
Sizes: S/M/L/XL/2XL  
Full Elasticated waist with toggle, twin needle stitched and two side seam pockets

Fabric: 65% polyester/35% cotton  
Weight: 190 gsm  
Sizes: S/M/L/XL/2XL  
Full Elasticated waist with toggle, twin needle stitched and two side seam pockets

Fabric: 65% polyester/35% cotton  
Weight: 190 gsm  
Sizes: S/M/L/XL/2XL  
Full Elasticated waist with toggle, twin needle stitched and two side seam pockets

CREATED FOR

**CHEFS WHO CARE HOW  
THEY LOOK**

# ADDITIONS

TB020103



**BLACK TABARD**

Fabric: 65% polyester  
35% cotton  
Weight: 190 gsm

GC019801



**UNISEX WHITE COAT**

Fabric: 65% polyester  
35% cotton  
Weight: 190 gsm  
Sizes: S / M / L / XL / XXL

HT015201



**WHITE SKULL**

Fabric: 65% polyester  
35% cotton  
Weight: 190 gsm  
Sizes: S / M / L / XL

HT015203



**BLACK SKULL**

Fabric: 65% polyester  
35% cotton  
Weight: 190 gsm  
Sizes: S / M / L / XL

HT015226



**BLUE GINGHAM**

Fabric: 65% polyester  
35% cotton  
Weight: 190 gsm  
Sizes: S / M / L / XL

HT015228



**BLACK GINGHAM**

Fabric: 65% polyester  
35% cotton  
Weight: 190 gsm  
Sizes: S / M / L / XL



# HOW TO WEAR THEM









## UNIFORM DESIGN

At Tibard, we pride ourselves on the design and manufacture of chefs wear and restaurant aprons. We feel that our ranges accommodate most people's needs; however, if you require something more exclusive, we have the skills and production facilities to bring your ideas to life. Our UK manufacturing base allows us to make high quality, bespoke products in lead times far shorter than any other apron or chef wear manufacturer can achieve. We can also produce off-shore for bulk orders and bespoke uniform requirements.



## SUPER BESPOKE APRONS

The majority of the bespoke products that we make are largely based on our existing range of products. This ensures that we create bespoke versions of tried and tested products that we know will stand the test of time, be functional in the workplace and be practical (and therefore affordable) to manufacture.

It is important to note that the Bespoke Products service is subject to minimum order quantities. For most items, our minimum order quantity is 50 units. Please note: this is not a contract manufacturing service, we will only produce bespoke garments directly for our customers.

# APRONS

AP031603



**ZIP  
MONEY POUCH**

Fabric: 65% polyester  
35% cotton  
Weight: 195 gsm

AP300531



**NAVY BUTCHERS**

Fabric: 100% cotton  
Weight: 290 gsm

AP300547BS



**BLACK BUTCHERS**

Fabric: 100% cotton  
Weight: 290 gsm

APP352801



**WHITE WAIST  
with pocket**

Fabric: 100% cotton  
Weight: 190 gsm

APP352803



**BLACK WAIST  
with pocket**

Fabric: 65% polyester  
35% cotton  
Weight: 190 gsm

APP352807



**RED WAIST  
with pocket**

Fabric: 65% polyester  
35% cotton  
Weight: 190 gsm

APP352815



**NAVY WAIST  
with pocket**

Fabric: 65% polyester  
35% cotton  
Weight: 190 gsm

AP352801



**WHITE WAIST**

Fabric: 100% cotton  
Weight: 190 gsm

AP352803



**BLACK WAIST**

Fabric: 65% polyester  
35% cotton  
Weight: 190 gsm

# APRONS

AP352807



**RED WAIST**

Fabric: 65% polyester  
35% cotton  
Weight: 190 gsm

AP352815



**NAVY WAIST**

Fabric: 65% polyester  
35% cotton  
Weight: 190 gsm

AP300501



**WHITE BIB**

Fabric: 100% Cotton  
Weight: 280 gsm

AP300503



**BLACK BIB**

Fabric: 65% polyester  
35% cotton  
Weight: 190 gsm

APP300501



**WHITE BIB**  
with pocket

Fabric: 100% Cotton  
Weight: 280 gsm

APP300503



**BLACK BIB**  
with pocket

Fabric: 65% polyester  
35% cotton  
Weight: 190 gsm

APP300603



**BLACK SHORT**

Fabric: 65% polyester  
35% cotton  
Weight: 190 gsm

SLAPP300503



**BLACK SHORT**  
with pocket

Fabric: 65% polyester  
35% cotton  
Weight: 190 gsm

TWAP052031P



**PLASTIC**

Fabric: 100% polyester  
with PVC  
Wipe Clean

# APRONS



Fabric: 100% cotton  
Weight: 255gsm



Fabric: 100% cotton  
Weight: 255gsm



Fabric: 100% cotton  
Weight: 255gsm



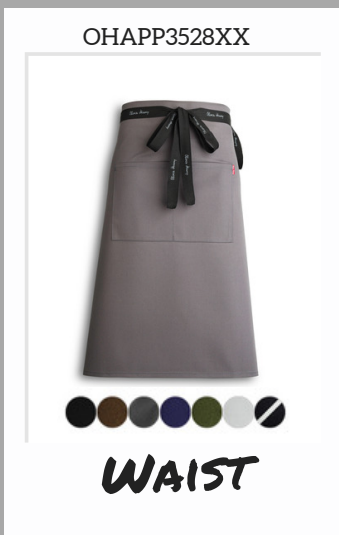
Fabric: 100% cotton  
Weight: 255gsm



Fabric: 100% cotton  
Weight: 255gsm



Fabric: 100% cotton  
Weight: 255gsm



Fabric: 65% polyester  
35% cotton  
Weight: 190 gsm



Fabric: 65% polyester  
35% cotton  
Weight: 190 gsm



Let us Produce your own  
colour/design apron  
Fabric: Choose from our range of  
colours and fabric

# CHEFS APRONS



Oliver Harvey

OHAP300503PC



**BLACK BIB**

Fabric: 65% polyester  
35% cotton  
Weight: 190 gsm

OHAP300515



**NAVY BIB**

Fabric: 65% polyester  
35% cotton  
Weight: 190 gsm

OHAP3005248



**GREY BIB**

Fabric: 65% polyester  
35% cotton  
Weight: 190 gsm

OHAP300501C



**WHITE BIB**

Fabric: 100% Cotton  
Weight: 280gsm

OHAP300583



**OLIVE BIB**

Fabric: 65% polyester  
35% cotton  
Weight: 190 gsm

OHAP300582



**BROWN BIB**

Fabric: 65% polyester  
35% cotton  
Weight: 190 gsm

OHAP300531 / OHAP052031



**BUTCHER NAVY BIB**

Fabric: 100% Cotton

OHAPP054447



**BUTCHER BLACK BIB**

Fabric: 100%vCotton

OHAPP054448



**GREY STRIPE BIB**

Fabric: 65% polyester  
35% cotton

# DENIM APRONS



*Oliver Harvey*

OHAPP0572224DEN



**NAVY DENIM  
BIB**

Fabric: 100% Denim

OHAPP0534GD



**GREY DENIM  
BIB**

Fabric: 100% Denim

OHAPP053403DEN



**BLACK DENIM  
BIB**

Fabric: 100% Denim

OHAPP0597224DEN



**NAVY DENIM  
CONTRAST**

Fabric: 100% Denim

OHAPP0596GD



**GREY DENIM  
CONTRAST**

Fabric: 100% Denim

OHAPP059703/153DEN



**BLACK DENIM  
CONTRAST**

Fabric: 100% Denim

OHAPP0598224DEN



**NAVY DENIM  
WAIST**

Fabric: 100% Denim

OHAPP0599GD



**GREY DENIM  
WAIST**

Fabric: 100% Denim

OHAPP060003/153DEN



**BLACK DENIM  
WAIST**

Fabric: 100% Denim

# ADJUSTABLE APRONS



Oliver Harvey

OHAPP0535222



**BROWN FOH**

Fabric: 100% Cotton

OHAPP0535241



**GREY FOH**

Fabric: 100% Cotton

OHAPP053583



**OLIVE FOH**

Fabric: 100% Cotton

OHAPP053515



**NAVY FOH**

Fabric: 100% Cotton

OHAPP053431



**BUTCHERS FOH**

Fabric: 100% Cotton

OHAPP063068HP2



**BISCUIT BIB**

Fabric: 100% Cotton

OHAPP061803DEN



**TWO TONE SHORT**

Fabric: 100% Denim

OHAPP061903DEN



**TWO TONE LONG**

Fabric: 100% Denim



**BESPOKE**

MOQ from 50 pieces

Fabric: Choose from our wide range of fabric, finish and accessories

# LEATHER DETAIL



Oliver Harvey

OHAPP061203DEN



**BLACK DENIM**

Fabric: 100% Denim  
Adjustable, Leather halter

OHAPP0612GD



**GREY DENIM**

Fabric: 100% Denim  
Adjustable, Leather halter

OHAP300531/222CTLC



**BUTCHERS STRIPE**

Fabric: 100% Cotton  
Adjustable, Leather halter

OHAP3005241/222CTLC



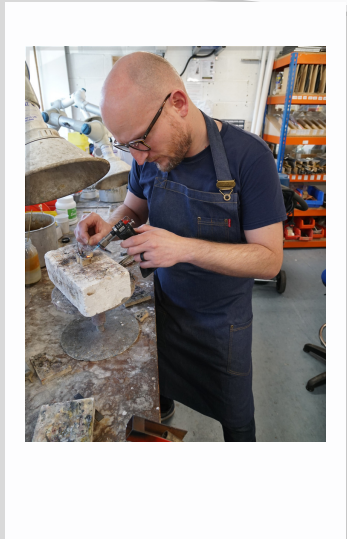
**GREY COTTON**

Fabric: 100% Cotton  
Adjustable, Leather halter

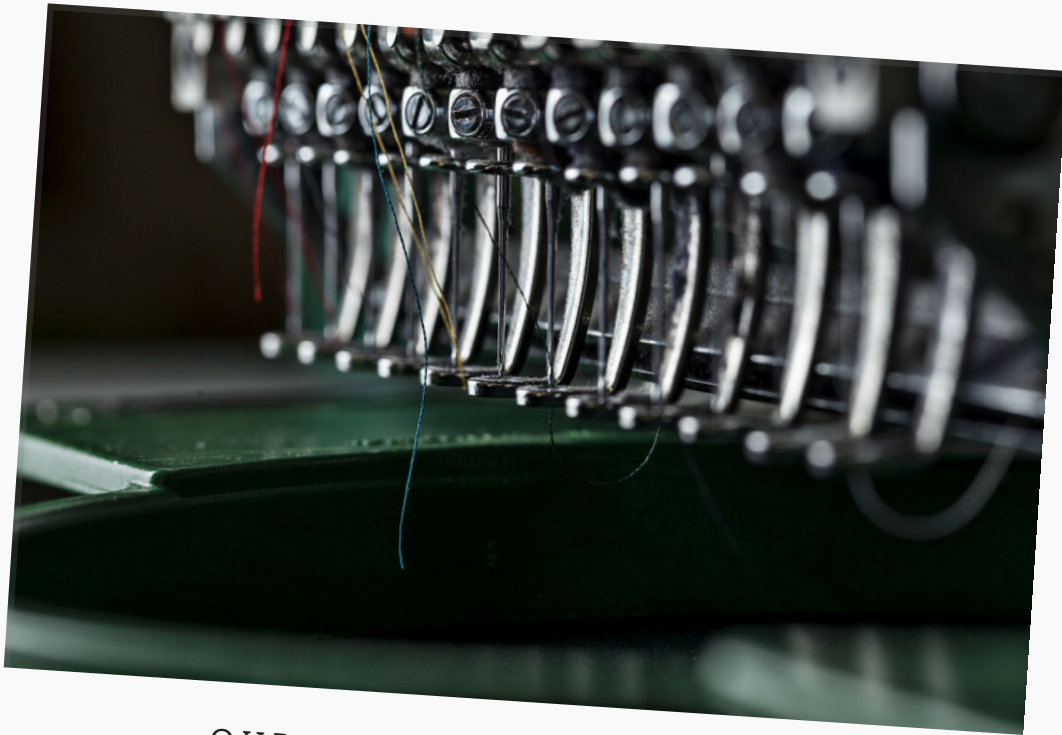




# HOW TO WEAR THEM



# EMBROIDERY



OUR OWN IN HOUSE SERVICE

## CUSTOMER EXAMPLES



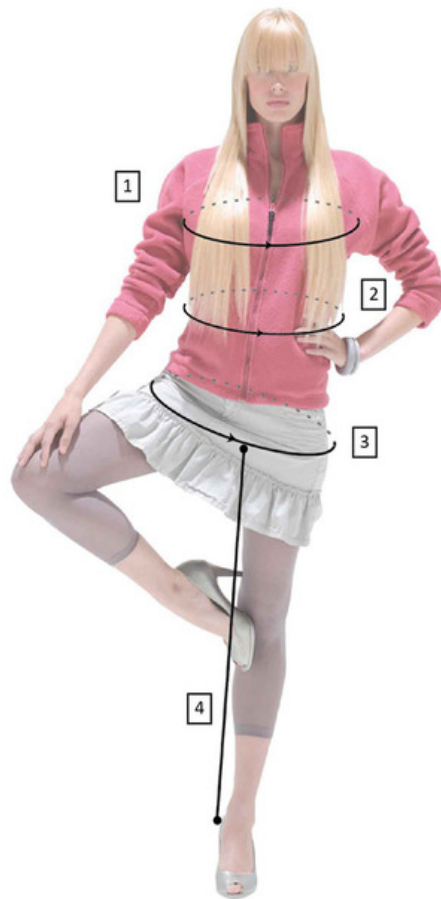
Add the finishing touches

# sizing chart

- 1 Collar Measure around the neck at the base where the shirt fits
- 2 Sleeve Taken from the underarm to wrist
- 3 Chest Measure around the fullest part, ensuring the tape is well up the back over the shoulder blades
- 4 Waist Measure around the natural waist line
- 5 Inside Leg Measure from the top of the inside leg at the crotch to the hem



- 1 Bust Measure across the fullest part and across the shoulder blades
- 2 Waist Measure around the natural waist line
- 3 Hips Measure at the fullest part
- 4 Inside Leg Measure from the top of the inside leg at the crotch to the hem



Chefs' Wear				
	Small	Medium	Large	X-Large
Chest ins:	34-36	38-40	42-44	46-48
Chest cm:	88-92	96-104	108-112	116-124
Waist ins:	28-30	32-34	36-38	40-42
Waist cm:	72-76	82-87	92-96	102-107

Sizes outside our standard range are subject to a 25% surcharge.

Regular length for chefs' trouser is 31"  
Long leg is subject to a 10% surcharge.

Mens' Wear											
Gents trousers are available in standard and long leg.											
If you have any queries regarding Tibard's sizes, please do not hesitate to call											
ins:	28	30	32	34	36	38	40	42	44	46	48
cm:	72	76	82	87	92	96	102	107	112	117	124

Ladies Wear							
Dress size	Bust		Wasit		Hips		Tabard
	cm	ins	cm	ins	cm	ins	size
8	76	30	56	22	81	32	small
10	81	32	61	24	86	34	small
12	86	34	66	26	91	36	medium
14	91	36	71	28	96	38	medium
16	96	38	76	30	102	40	large
18	102	40	81	32	107	42	large
20	107	42	86	34	112	44	ex-large

Standard size range for 8-20, sizes outside this range are subject to a 25% surcharge.



TIBARD   
Uniform in our Expertise



*Oliver Harvey*